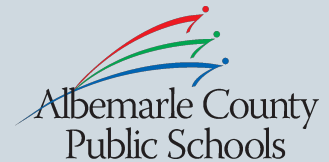




REDISTRICTING ADVISORY COMMITTEE FOR THE EXPANSION OF CROZET ELEMENTARY

MEETING #1
SEPTEMBER 28, 2021



AGENDA

1

COMMITTEE OVERVIEW AND CHARGE

2

BACKGROUND INFORMATION

3

CAPACITY AND ENROLLMENT INFORMATION

4

NEIGHBORHOOD BOUNDARIES

5

DEVELOPMENT INFORMATION

6

IDENTIFY SCENARIO STARTING POINT

7

NEXT STEPS

COMMITTEE MEMBERS

Crozet Elementary Representatives

Rich Anderson

Lauren Carter

Cathryn Davis

Rupesh Silwal

Brownsville Elementary Representatives

Andrew Joyner

Christine Koenig

Jojo O'Loughlin

Jennifer Roper

Long Range Planning Advisory Committee Representative

Jerrod Smith

Equity and Diversity Committee Representative

Scott Guggenheimer

ACPS STAFF

Patrick McLaughlin

Chief of Strategic Planning

Renee DeVall

Routing and Planning Manager

Maya Kumazawa

Director of Budget and Planning

Michele Castner

Executive Director of Elementary Education

Phil Giaramita

Strategic Communications Officer

Lauren Hunt

Web and Social Media Specialist

Stephanie Hall

Office Associate

GREETINGS FROM DR. HAAS

Albemarle County Public Schools Superintendent

VISION & MISSION

Vision

Our learners are engaged in authentic, challenging, and relevant learning experiences, becoming lifelong contributors and leaders in our dynamic and diverse society.

Mission

Working together as a team, we will end the predictive value of race, class, gender, and special capacities for our children's success through high-quality teaching and learning for all. We seek to build relationships with families and communities to ensure that every student succeeds.

We will know every student.

VALUES

Equity

We will provide every student with the level of support necessary to thrive.

Excellence

We will mitigate barriers and provide opportunities for every student to be academically successful.

Family and Community

We will engage with and share the responsibility for student success with families and community partners.

Wellness

We will support the physical and emotional health of our students and staff.

GOALS

Thriving Students will facilitate learning experiences grounded in high expectations, networks of care, and student curiosity to ensure academic and social-emotional development for all students while eliminating opportunity, access, and achievement gaps.

Affirming and Empowering Communities is about strengthening the social context of the environment in which ACPS community works.

Equitable, Transformative Resources concerns the intentional flow of critical, equitably distributed human, financial, technological, and other resources to the students and teachers for transformative learning to take place.

STUDY OBJECTIVE

The purpose of this study is to address current and projected overcrowding at Brownsville Elementary. The proposed scope of the study will involve Brownsville and Crozet Elementary Schools only.

GUIDING PRINCIPLES

Attendance areas will serve the district for at least 3-5 years with a goal of 5-7 years

Attendance areas will be largely contiguous

Walk areas for each school will be considered

Transportation routes will be as efficient as possible, giving consideration to minimizing ride times within acceptable parameters

Neighborhoods will be assigned to the same school whenever possible

Greater demographic balance amongst impacted schools will be strived for where feasible

Grandfathering existing students will be considered by the Board on a study by study basis.

PROCESS

1

Redistricting Advisory Committee

The public will be able to provide input to the Redistricting Advisory Committee (RAC) through email and through two public meetings.

2

Superintendent Dr. Matthew Haas

The public will be able to provide Dr. Haas with feedback through email.

3

School Board

The public will be able to provide the School Board with feedback at a public hearing before the board votes on the proposed redistricting plan.

SCHEDULE

August 2021

School Board approves scope of study and directs Superintendent to convene committee and conduct study

Superintendent advertises and receives applications for the committee

September 2021

Superintendent appoints committee members and begins sharing information

Initial meeting of redistricting committee

October 2021

Committee meets two times to develop multiple redistricting scenarios

November 2021

Two community meetings held to share scenarios and receive feedback

Committee meets to finalize recommendation to the Superintendent

December 2021

Superintendent presents his recommendation to School Board

January 2022

School Board holds a public hearing

School Board votes on the Superintendent's recommendation

February - August 2022

Families are notified and transition activities take place

2022-23 School Year

New boundaries go into effect

FOLLOW OUR PROCESS

VISIT OUR WEBPAGE

Visit the webpage for the Brownsville and Crozet Redistricting study to view the background, scope, committee meeting schedule and more.

LIVESTREAM OUR MEETINGS

Livestream the committee meetings to listen in on the conversation around redistricting. This link can be found on the webpage.

EMAIL THE COMMITTEE

We have established an email address dedicated to this redistricting. Please note that this email is only to submit feedback and no response will be provided.

k12albemarle.org/redistricting

|

RAC@k12albemarle.org

AVAILABLE DOCUMENTS

The following documents will be available through this Google Folder:

- Study Scope
- Committee Membership
- Meeting Schedule
- School Board Policy FB: Facility Planning
- Capacity vs. Enrollment
- Slide Decks
- Current Boundary Maps
- Planned Developments



BACKGROUND INFORMATION

TIMELINE

Phase I (Fall 2007):

- Transfer students from Crozet Elementary to Meriwether Lewis Elementary who live on Browns Gap Turnpike and Garth Road, from White Hall to Albemarle Lake Road. (24 students)

Phase II (Fall 2009):

- Transfer students from Crozet Elementary to Brownsville Elementary who live north side Jarmans Gap Road. Grayrock, Waylands Grant, Bargamin Loop and all homes on Jarmans Gap Rd from the intersection of Lanetown Rd to the intersection of Orchard Rd.

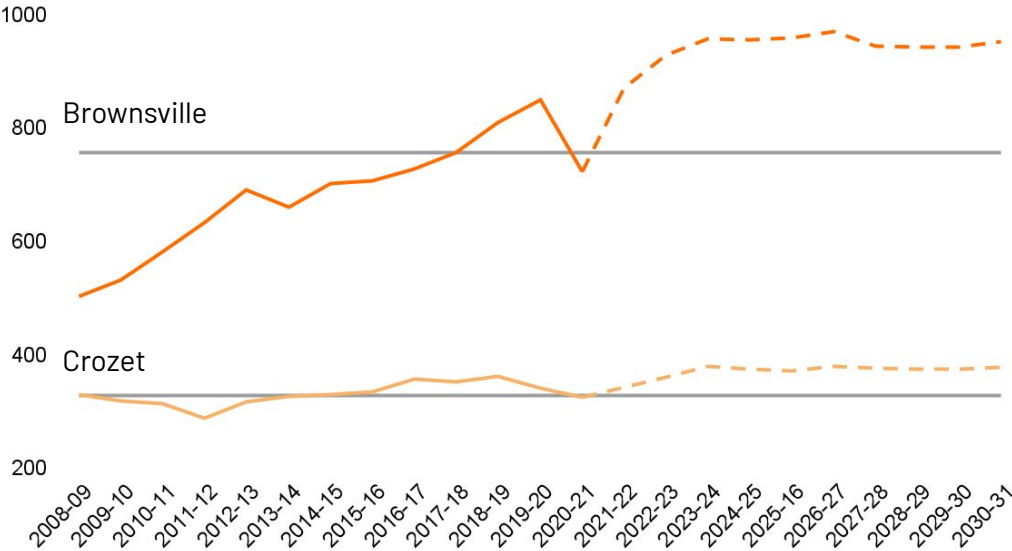
WHY CROZET?

Brownsville and Crozet elementary schools' peak combined projected deficit is

265

seats in 2026/27

Enrollment vs Capacity



School	Historical	Capacity	Development	Population Forecasts
Brownsville Crozet	▲	▲	▲	▲
Key: ● Low ■ Moderate ▲ High				

CROZET ADDITION, RENOVATIONS, AND SITE IMPROVEMENTS

Scope

- +35,000 gross square foot in total additions to the building including 17 classrooms, associated support spaces, and expanded kitchen, cafeteria and media center.
- Replacement of the existing HVAC system, improved internal circulation, ADA upgrades
- Renovation of existing building
- Site improvements



Schedule

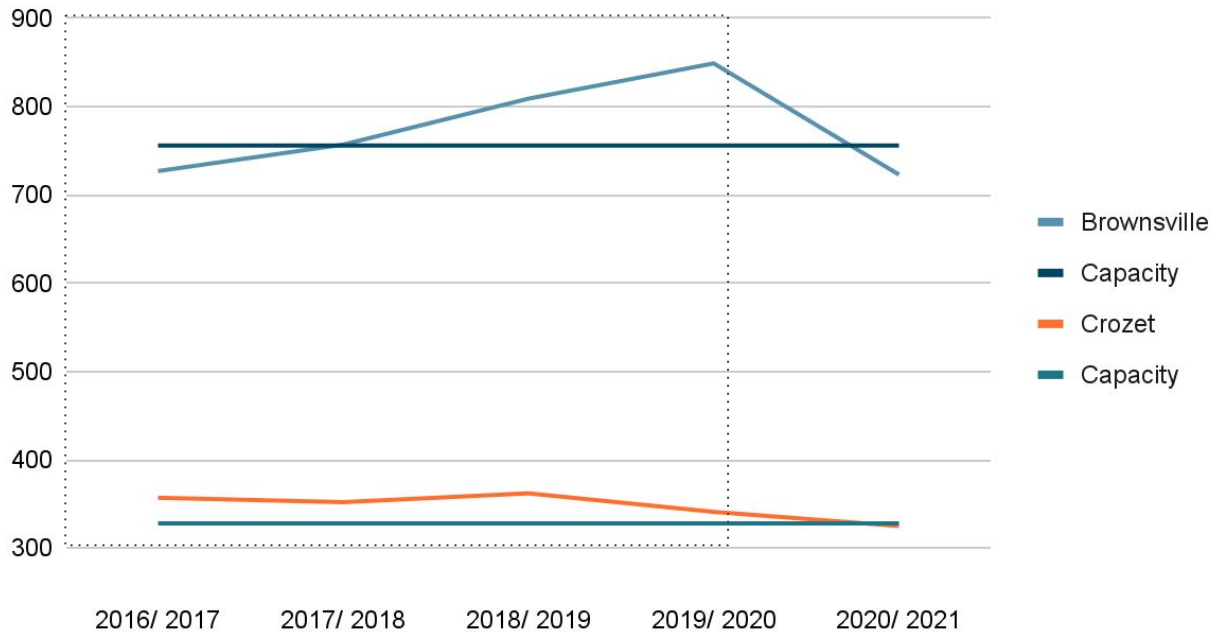
- Design process took place Spring through Fall of 2020.
- Construction began in May 2021 and will be complete for the 2022/23 school year.



CAPACITY AND ENROLLMENT

CAPACITY VS. ENROLLMENT

Historical Enrollment vs. Capacity



ENROLLMENT OVERVIEW (K-5)

September 3: 10-Day Enrollment

	Sep 30, 2019	Sep 30, 2020	Sep 3, 2021*
Brownsville	849	723	748
Crozet	341	325	325
Combined	1,190	1,048	1,073

September 30: "Fall Enrollment"

- Sept 30 Enrollment is used to project future years
- 10-year enrollment projections will be available at the October 12 meeting

*Including virtual school enrollment

BUILDING CAPACITY – BROWNSVILLE

BROWNSVILLE					
Room Total	42				
Art	(1.5)				
Music	(1.5)				
Pre-K	(1.0)				
Auxiliary Deficit	(2.0)				
	<u>Qty</u>		<u>Multiplier</u>		<u>Total</u>
SPED (SCC)	0	x	8	=	0
K-5	36	x	21	=	756
BUILDING CAPACITY					756

BUILDING CAPACITY – CROZET

CROZET					
Room Total	22				
Art	(1.0)				
Music	(1.0)				
Pre-K	(1.0)				
Auxiliary Deficit	(2.0)				
	Qty		Multiplier		Total
SPED (SCC)	1	x	8	=	8
K-5	16	x	20	=	320
BUILDING CAPACITY					328



CROZET + EXPANSION					
Room Total	39				
Art	(1.5)				
Music	(1.5)				
Pre-K	(1.0)				
Auxiliary Deficit	(1.0)				
	Qty		Multiplier		Total
SPED (SCC)	1	x	8	=	8
K-5	33	x	20	=	660
BUILDING CAPACITY					668

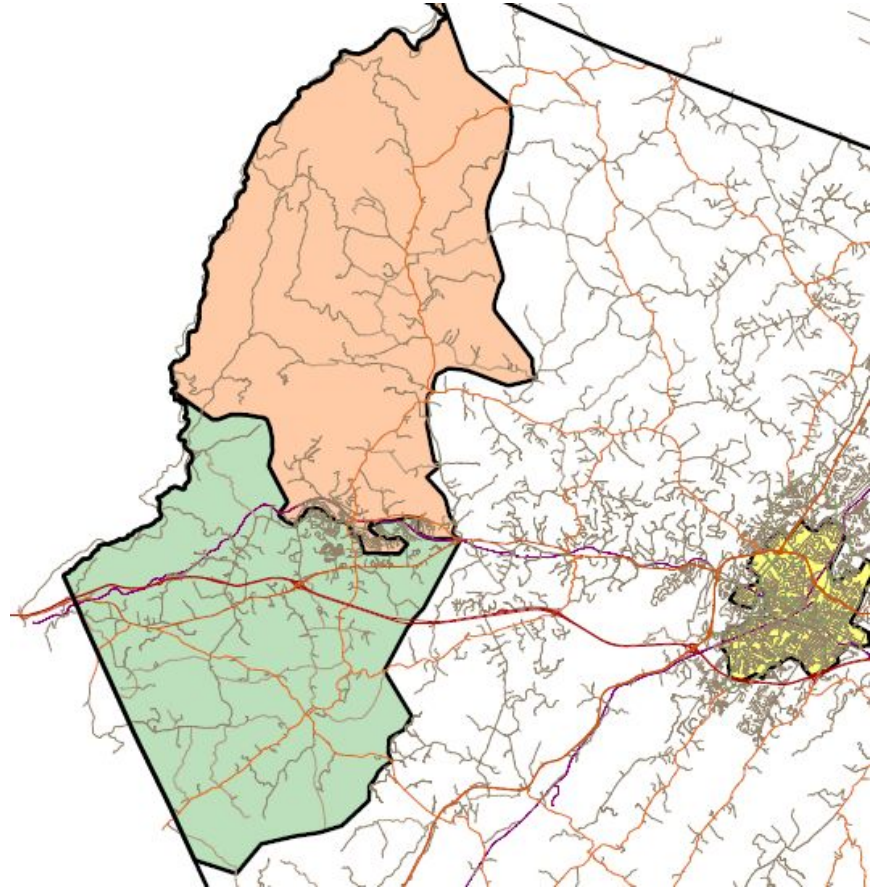
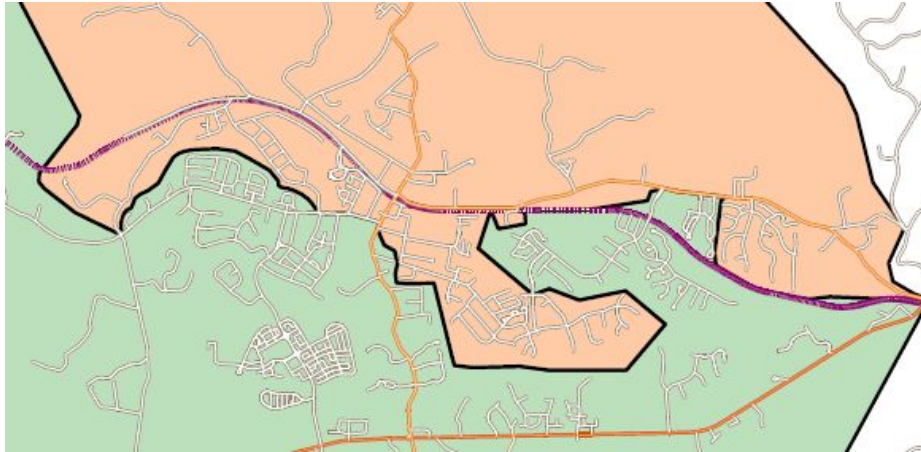
BREAK

Please return in 10 minutes.

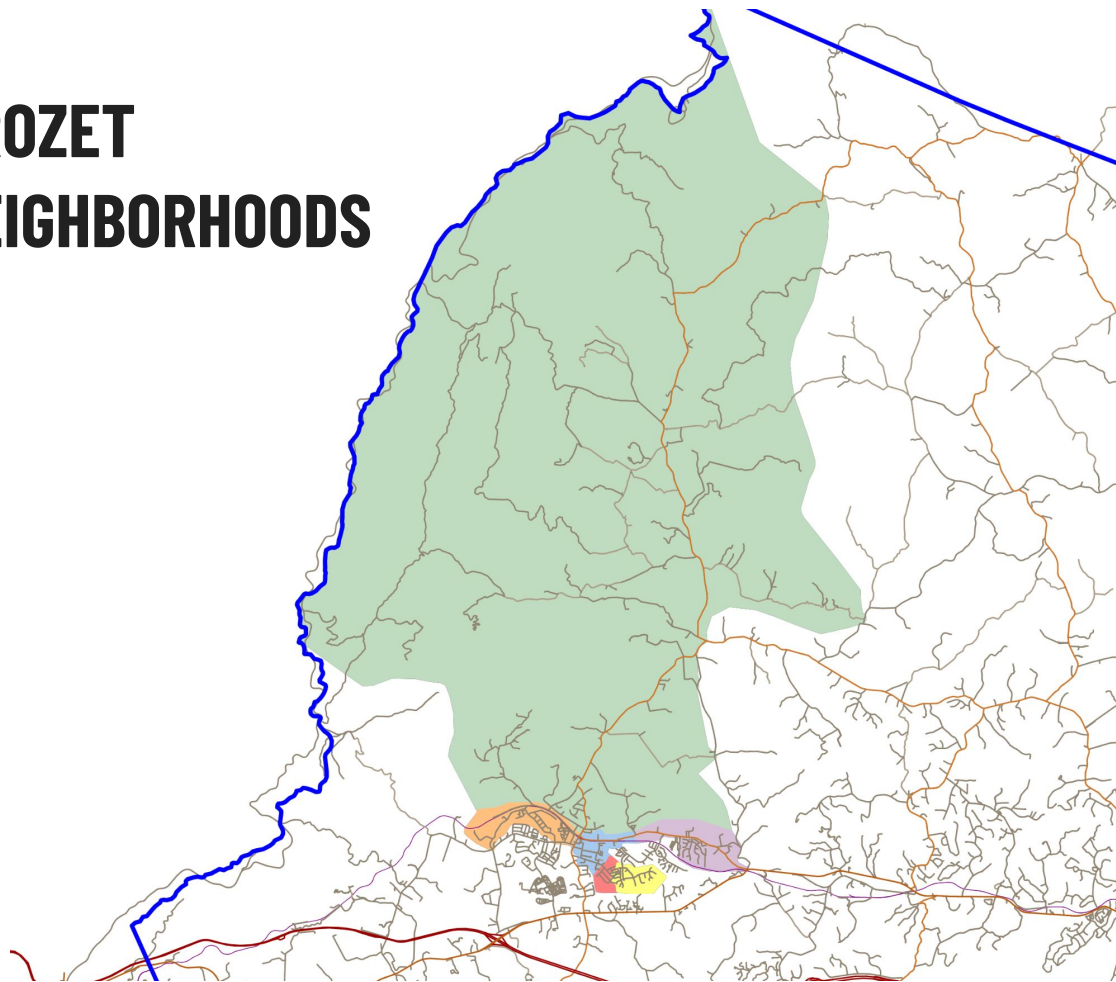


NEIGHBORHOOD INFORMATION

CURRENT BOUNDARIES

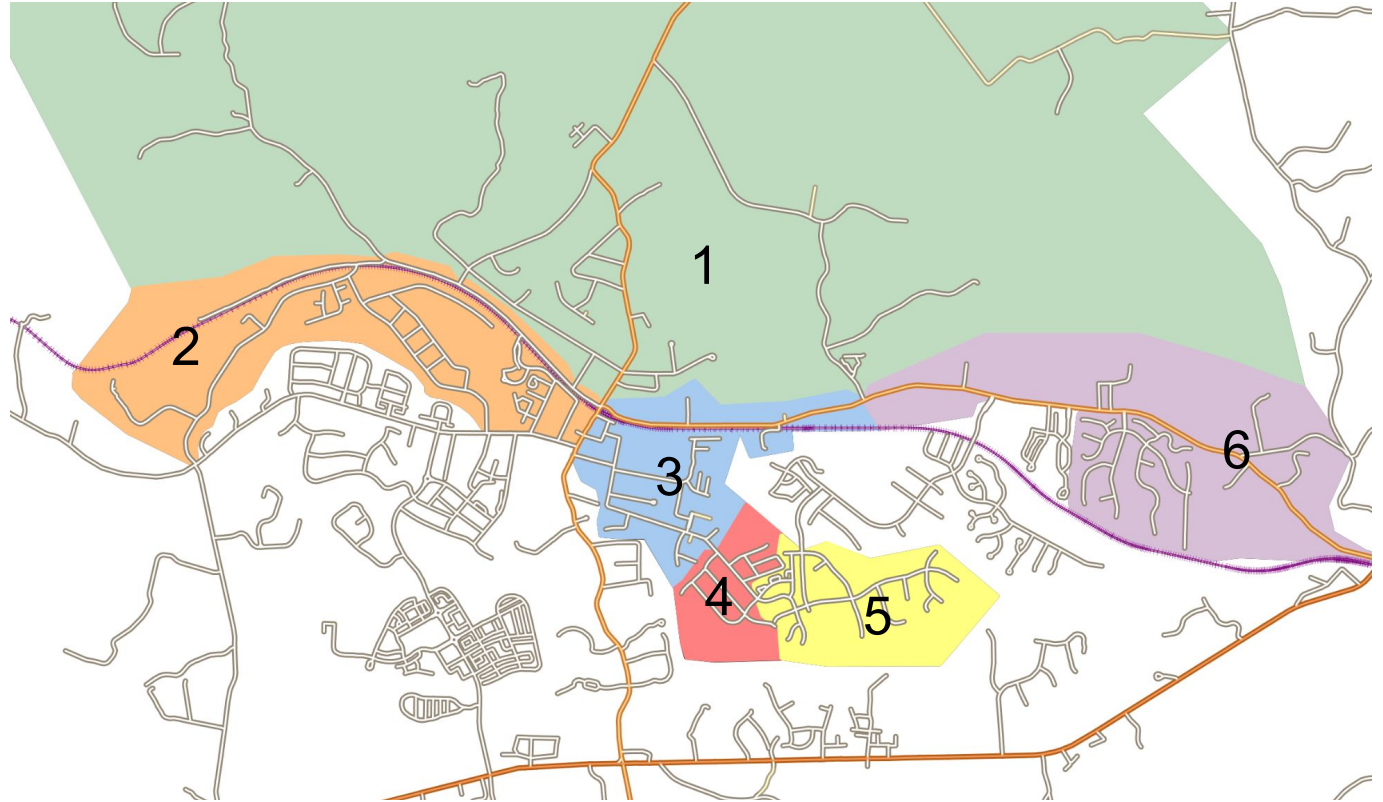


CROZET NEIGHBORHOODS



CROZET NEIGHBORHOODS

1. N of 240 and
N of Railroad
Ave
2. Lanetown Way
& Orchard
3. Hill Top and
Park
4. Sneads &
Claudius
5. Westhall
6. Highlands

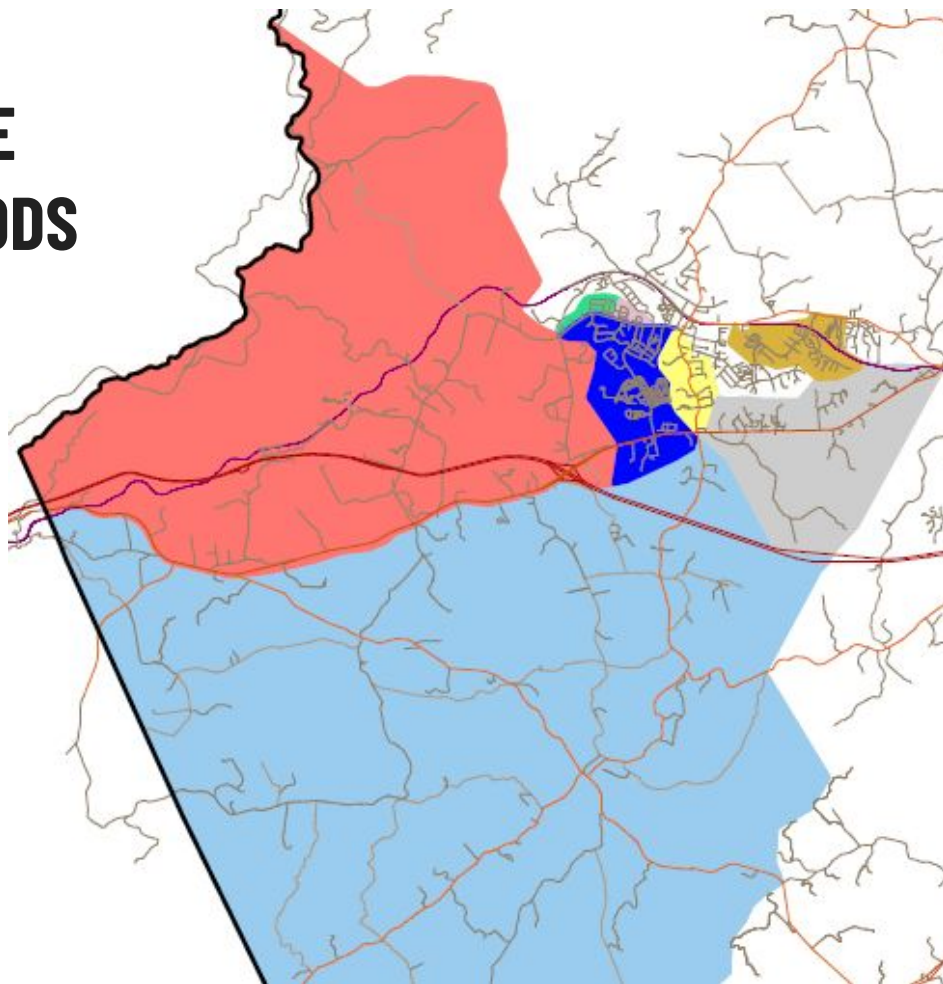


CROZET ENROLLMENT HISTORY BY NEIGHBORHOOD

10 DAY
COUNT

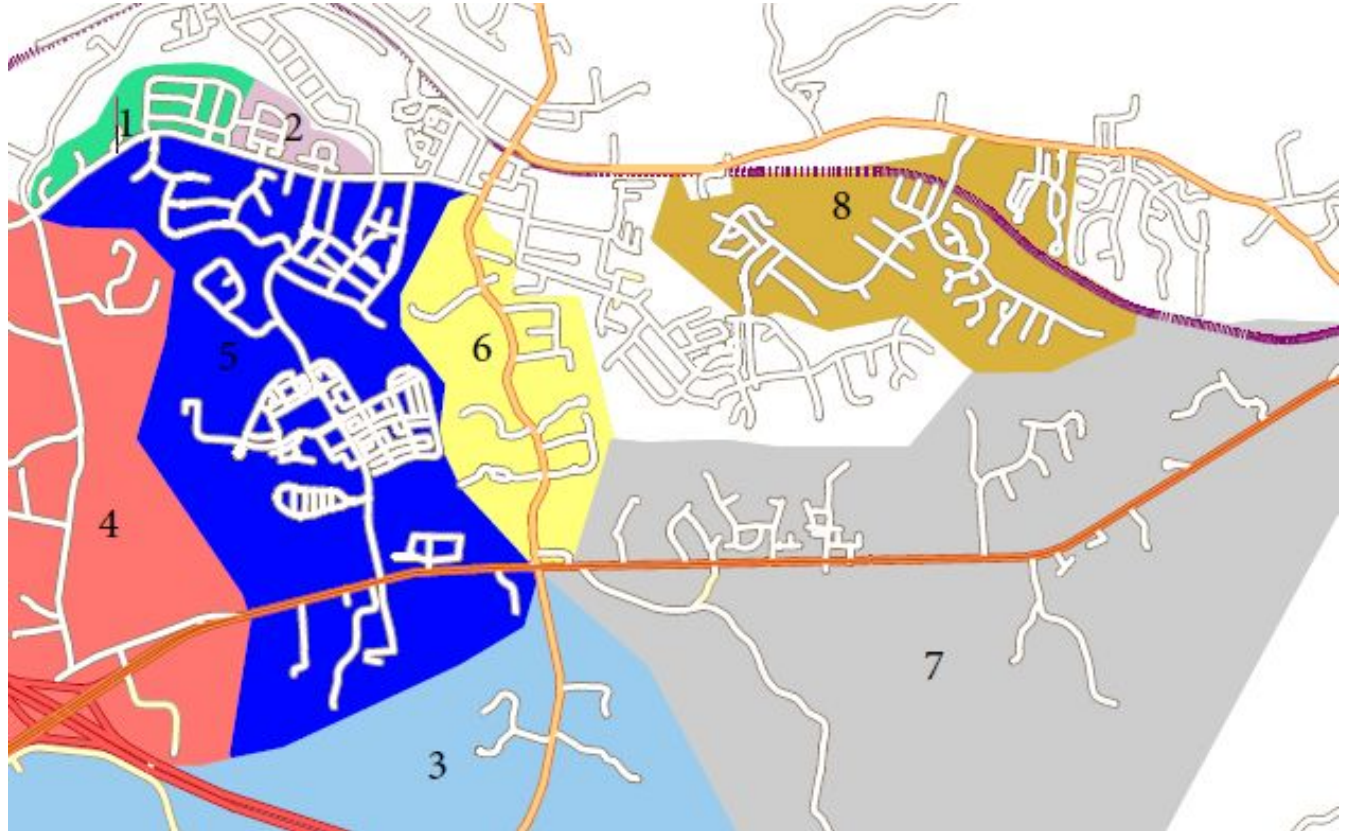
		2016-17	2017-18	2018-19	2019-20	2020-21	2021-22
1	N of 240 & N of Railroad Ave	86	91	101	94	96	91
2	Lanetown Way & Orchard	58	55	53	57	44	44
3	Hill Top and Park	36	35	38	30	24	31
4	Sneads & Claudius	52	47	47	41	38	30
5	Westhall	44	52	66	70	71	76
6	Highlands	72	64	60	51	39	39
		348	344	365	343	312	311

BROWNSVILLE NEIGHBORHOODS



BROWNSVILLE NEIGHBORHOODS

1. Grayrock
2. Waylands Grant & Bargamin
3. S of Rt 250
4. Batesville
5. N of Rt 250
6. Newtown
7. Old Trail
8. Rt 240 between Crozet and Rt 250/Miller School Road
9. Western Ridge/Wickham Pond



BROWNSVILLE ENROLLMENT HISTORY BY NEIGHBORHOOD

10 DAY
COUNT

		2016-17	2017-18	2018-19	2019-20	2020-21	2021-22
1	Grayrock	62	51	55	44	35	27
2	Waylands Grant & Bargamin	47	47	56	52	41	34
3	S of Rt 250 Batesville	124	125	133	136	112	114
4	N of Rt 250 Newtown	57	60	68	69	60	61
5	Old Trail	214	225	221	234	174	187
6	Rt 240 between Crozet & Rt 250/Miller School Road	13	21	25	35	35	35
7	Rt 250 E of Miller School	69	63	73	92	91	89
8	Western Ridge/Wickham Pond	144	153	167	185	166	163
		730	745	798	847	714	710



DEVELOPMENT INFORMATION

PLANNED DEVELOPMENT

Crozet Development Under Review / Under Construction

Barnes Lumber Phase 1 (52)
Old Dominion Village (110)
Bamboo Grove (6)
Glenbrook Foothill Crossing Phase V (35)
Pleasant Green Phase 2 (126)
Emerson Commons (Blue Ridge Cohousing) (6)
Park Lane (Crozet Court) (12)
Westlake Hills (4)
Glenbrook (198)¹

Brownsville Development Under Review / Under Construction

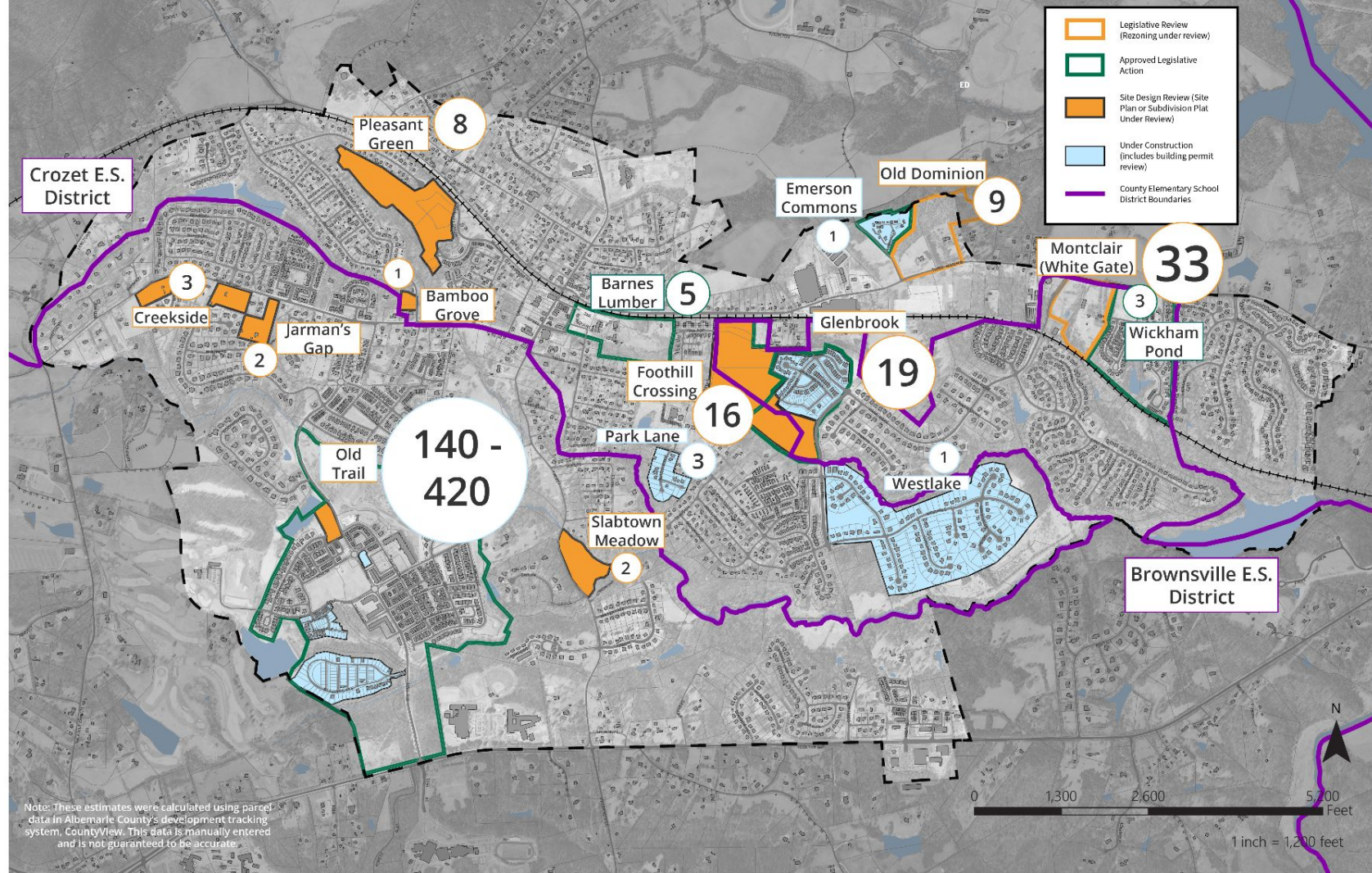
Montclair (White Gate Village) (125)
Wickham Pond 2 (50)
Chesterfield Landing I (1)
Creekside V Phases I and II (9)
Glenbrook Phase I (7)
Jarman's Gap SUB (5)
Slabtown Meadow (7)
Old Trail Village (118)²
Glenbrook (198)¹

1 Additional Potential Future Developments/Build Outs: 41. Listed in both school district since the development crosses current school boundaries.

2 Additional Potential Future Developments/Build Outs: 450-1,450.

Potential Student Yield (Draft Estimates)

Based on Under Review/Under Construction, ZMA Potential Build Outs





**SUGGESTED
STARTING POINT**

STARTING POINT TO CONSIDER

As we begin to develop scenarios for our next meeting, what target should we set for the number of students to move from Brownsville to Crozet?

NEXT STEPS

- Staff will bring starting point scenarios next meeting
- Staff will provide answers to additional questions that arose at tonight's meeting
- Emails that come to our redistricting inbox will be posted for team's review