

## Contents

Our Schools.....	3
Feeder Patterns .....	5
School Locations .....	6
Elementary School Districts .....	7
Middle School Districts .....	8
High School Districts .....	9
Overview of School Budgets .....	10
Budget Summary by Schools.....	11
Agnor-Hurt Elementary .....	12
Baker-Butler Elementary .....	14
Broadus Wood Elementary .....	16
Brownsville Elementary.....	18
Crozet Elementary .....	20
Greer Elementary.....	22
Hollymead Elementary .....	24
Meriwether Lewis Elementary (Ivy Elementary School as of July 2023) .....	26
Mountain View Elementary .....	28
Murray Elementary.....	30
Red Hill Elementary .....	32
Scottsville Elementary.....	34
Stone-Robinson Elementary .....	36
Stony Point Elementary.....	38
Woodbrook Elementary.....	40
Burley Middle School .....	42
Henley Middle School .....	44
Journey Middle School.....	46
Lakeside Middle School .....	48
Walton Middle School .....	50
Albemarle High School.....	52
Monticello High School.....	54
Western Albemarle High School .....	56
Community Lab School .....	58
Center I.....	60
Post High.....	62
Charlottesville Albemarle Technical Education Center (CATEC) .....	64



---

Center for Learning & Growth .....	66
Other Multi-School Services.....	67

## Our Schools

Based on fall enrollment for the 2022-23 school year, ACPS serves 13,967 students at our schools listed below:

### *Elementary Schools (PK-5)*

- Agnor-Hurt
- Baker-Butler
- Broadus Wood
- Brownsville
- Crozet
- Mary C. Greer (Greer)
- Hollymead
- Meriwether Lewis (K-5 only)
- Mountain View
- Virginia L. Murray (Murray)
- Red Hill
- Scottsville
- Stone-Robinson
- Stony Point
- Woodbrook

### *Middle Schools (6-8)*

- Jackson P. Burley (Burley)
- Joseph T. Henley (Henley)
- Journey
- Lakeside
- Leslie H. Walton (Walton)

### *High Schools (9-12)*

- Albemarle (AHS)
- Monticello (MoHS)
- Western Albemarle (WAHS)

### *Charter School (6-12)*

- Community Lab School

### *Other Programs*

- Post High
- Center for Learning & Growth
- Center 1
- CATEC

## School Quality Profiles

For every school division and school in the Commonwealth, the Virginia Department of Education provides a School Quality Profile containing information about student achievement, college and career readiness, program completion, school safety, teacher quality, and other topics of interest to parents and the general public. The School Quality Profile for Albemarle County Public Schools, including the division-level profile and profiles for each of our schools, can be accessed online at <https://schoolquality.virginia.gov/divisions/albemarle-county-public-schools>.

## SMART Goals

Albemarle County Public Schools has one overarching goal: Working together as a team, we will end the predictive value of race, class, gender, and special capacities for our children's success through high-quality teaching and learning for all. We seek to build relationships with families and communities to ensure that every student succeeds. In order to meet this goal, the division works with each school to develop SMART goals that are used as benchmarks to monitor our students' and staff's work toward our mission. A SMART goal incorporates several criteria to help guide measurements of success: Specific, Measurable, Attainable, Realistic, and Timely.

For the 2022-23 school year, ACPS developed the following SMART goals for each school:

- As measured by end of year SOL tests, every enrollment group in the school will meet state accreditation targets or reduce the previous failure rate by 10% in all tested subjects.
- We will foster a positive school climate for students and staff as demonstrated through high levels of engagement on the Gallup survey (staff) and the Panorama survey (students and families).

Our Office of Strategic Planning, Accountability & Research, and Program Evaluation then works with each school location to create a Strategic Improvement Plan that administration and staff will use to meet these goals. For more information on these plans, please visit our website at [k12albemarle.org/sip](http://k12albemarle.org/sip).

## Feeder Patterns

Due to the large geographic size of Albemarle County, our schools are divided into three “feeder patterns” according to geographical area: Northern, Southern and Western. A feeder pattern consists of the elementary, middle and high schools through which students progress.

	Northern	Southern	Western
<b>Elementary Schools</b>	Agnor-Hurt* Baker-Butler Broadus Wood Greer Hollymead Stony Point* Woodbrook	Mountain View* Red Hill Scottsville Stone-Robinson* Stony Point*	Brownsville Crozet Meriwether Lewis Murray
<b>Middle Schools</b>	Burley** Journey Lakeside	Burley** Walton	Henley
<b>High Schools</b>	Albemarle	Monticello	Western Albemarle

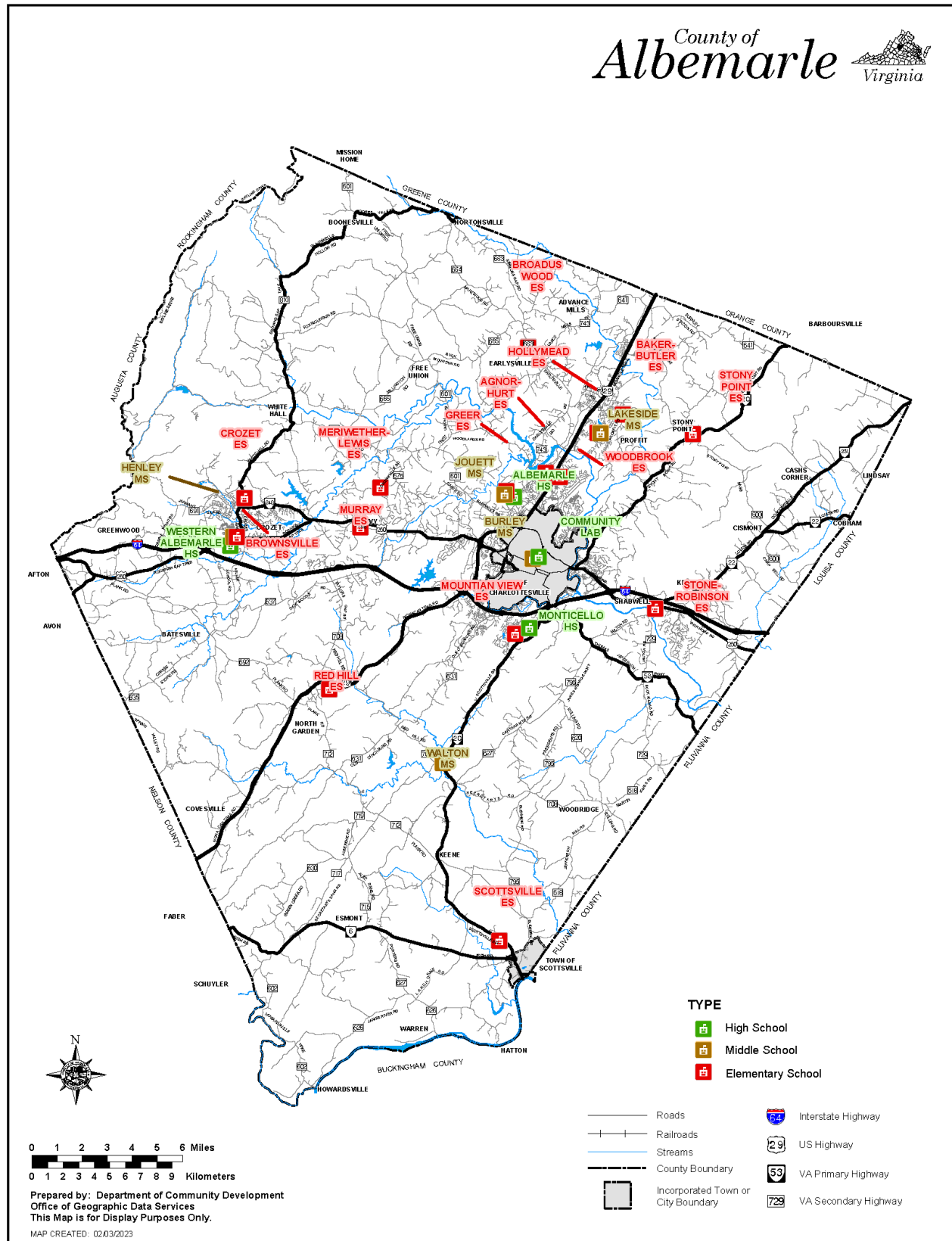
*\*Student body splits at the middle school level:*

- Agnor-Hurt Elementary School students will continue to either Burley or Journey Middle School and then Albemarle High School.
- Stony Point Elementary School students will continue to either Burley Middle School and then Monticello High School, or Lakeside Middle School followed by Albemarle High School.
- Mountain View and Stone-Robinson Elementary School students will continue to either Burley or Walton Middle School and then Monticello High School.

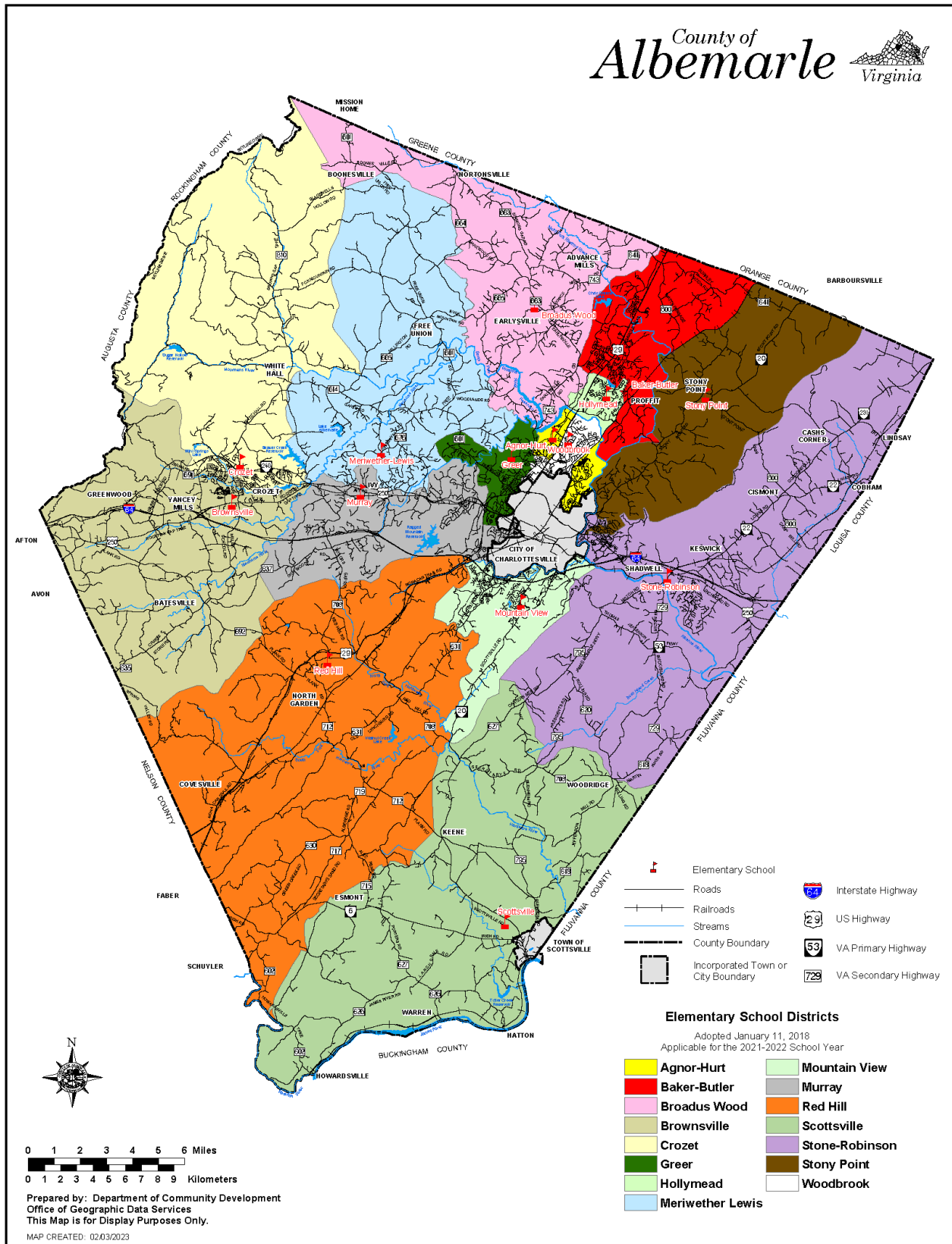
*\*\*Student body splits at the high school level:*

- Burley Middle School students will attend either Albemarle or Monticello High School.

## School Locations

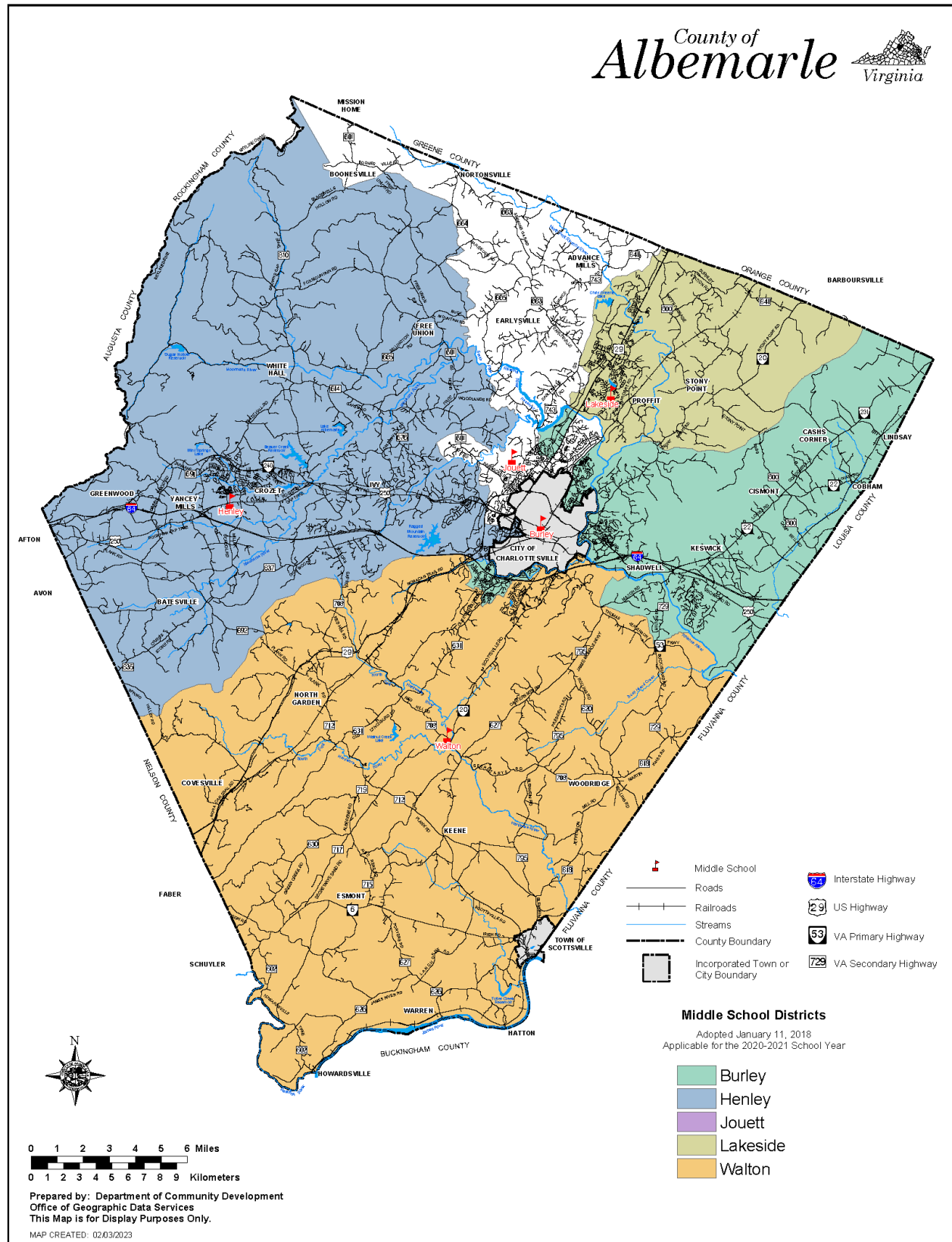


## Elementary School Districts



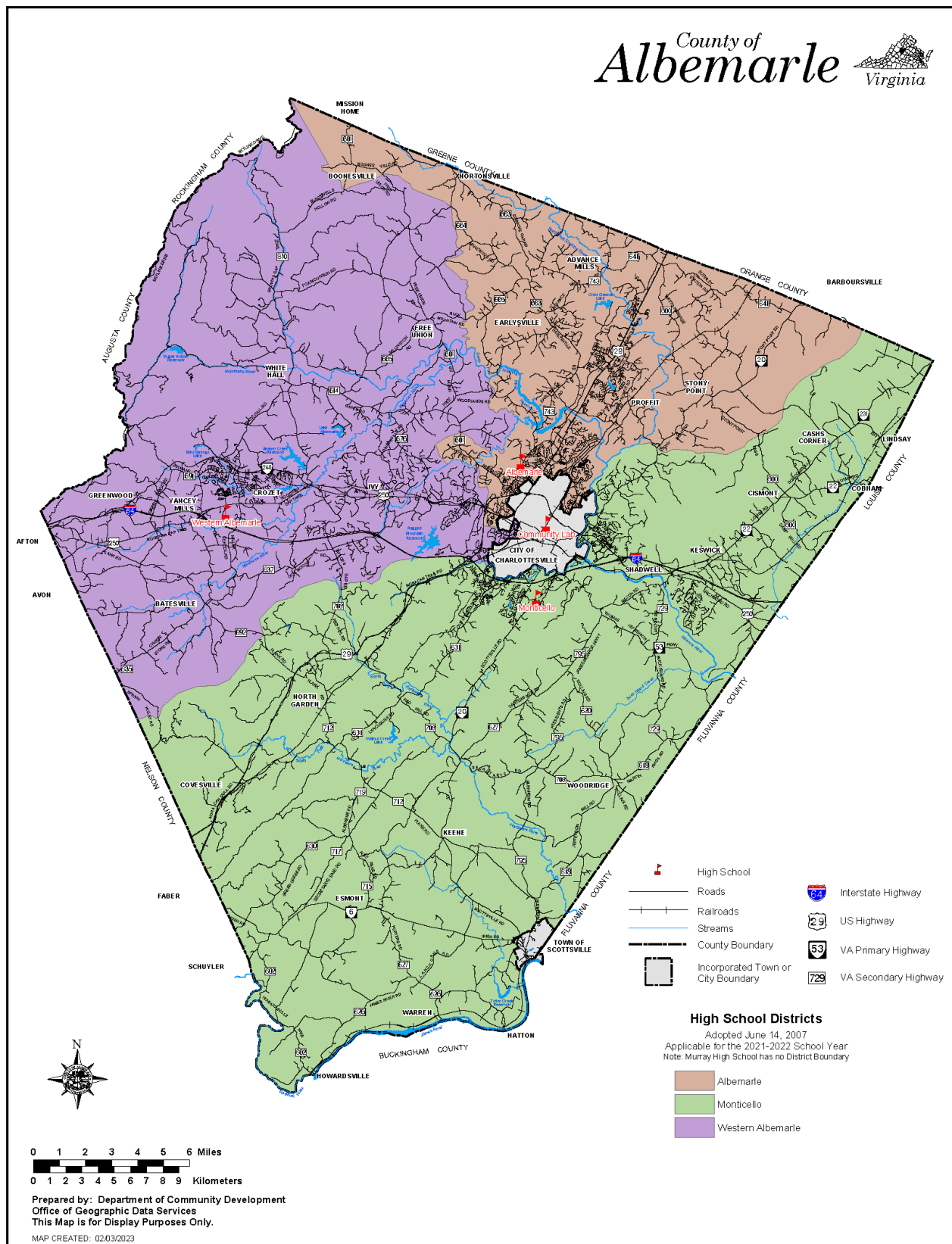


## Middle School Districts





## High School Districts



## Overview of School Budgets

School budgets are primarily driven by and developed based on projected student enrollment and demographics. The majority of budgeted funds can be attributed to staff compensation. Schools are provided staffing resources based on the Division's staffing standards and formulas. The remaining budget is allocated for general operations and determined by various factors, including student enrollment and demographics. Section G contains detailed information about these budget factors and allocations.

### **FY 2023/24 Changes**

Changes in School Budgets are described in Section A and include:

#### Technical and Non-Discretionary

- Baseline Adjustment
- Health Care
- CATEC
- Building Services Operational Impacts

#### Compensation

- 5% Salary Increase & Teacher Step Adjustments

#### Enrollment and Demographics

- Regular Growth
- ESOL Growth
- Differentiated Staffing Restructure
- Special Education – Intensive Support Services

#### Transitioning from One-Time Funding

- Full-time Teaching and EDEP Assistants

#### New Proposals

- Security Assistants
- Substitute Program Improvements (Phase II)

## Budget Summary by Schools

23 Adopted v. 24 Request

School Type	19-20 Actuals	20-21 Actuals	21-22 Actuals	22-23 Adopted	22-23 FTE	23-24 Request	23-24 FTE	Increase	Increase %
<b>Elementary Schools</b>	<b>\$63,313,533</b>	<b>\$62,758,326</b>	<b>\$69,040,234</b>	<b>\$73,223,528</b>	<b>897.44</b>	<b>\$82,872,078</b>	<b>1,003.78</b>	<b>\$9,648,550</b>	<b>13.2%</b>
Agnor-Hurt	\$4,753,511	\$4,754,199	\$5,058,613	\$5,097,329	59.97	\$5,569,771	67.52	\$472,442	9.3%
Baker-Butler	\$6,014,717	\$6,236,089	\$6,828,950	\$7,214,666	88.45	\$8,908,693	108.47	\$1,694,027	23.5%
Broadus Wood	\$2,800,640	\$2,821,758	\$3,217,846	\$3,500,094	42.91	\$4,137,647	52.26	\$637,553	18.2%
Brownsville	\$6,614,957	\$6,775,456	\$7,470,249	\$5,759,446	70.55	\$6,716,288	81.89	\$956,842	16.6%
Crozet	\$3,153,338	\$3,120,415	\$3,431,675	\$5,470,793	62.90	\$5,843,065	66.67	\$372,272	6.8%
Greer	\$5,630,102	\$5,366,192	\$5,721,895	\$5,802,581	70.09	\$6,968,646	84.86	\$1,166,065	20.1%
Hollymead	\$3,997,658	\$3,966,983	\$4,155,807	\$4,085,583	48.36	\$4,847,474	61.83	\$761,891	18.6%
Meriwether Lewis	\$3,729,299	\$3,214,351	\$3,540,188	\$3,505,591	42.56	\$3,860,254	43.78	\$354,663	10.1%
Mountain View	\$7,098,804	\$7,025,635	\$7,980,789	\$8,425,528	101.36	\$9,626,336	116.23	\$1,200,808	14.3%
Murray	\$2,771,147	\$2,758,647	\$3,130,111	\$3,620,201	46.95	\$3,815,981	47.91	\$195,780	5.4%
Red Hill	\$2,227,076	\$2,024,374	\$2,147,512	\$2,554,685	30.16	\$2,828,429	32.36	\$273,744	10.7%
Scottsville	\$2,449,970	\$2,280,630	\$2,598,491	\$2,814,035	36.37	\$3,003,838	35.49	\$189,803	6.7%
Stone-Robinson	\$4,430,218	\$4,785,431	\$5,104,206	\$5,554,004	73.41	\$5,773,060	72.67	\$219,056	3.9%
Stony Point	\$2,554,922	\$2,372,613	\$2,510,408	\$2,823,385	33.78	\$2,972,497	36.10	\$149,112	5.3%
Woodbrook	\$5,087,174	\$5,255,555	\$6,143,495	\$6,995,607	89.60	\$8,000,099	95.74	\$1,004,492	14.4%
<b>Middle Schools</b>	<b>\$27,268,160</b>	<b>\$29,131,285</b>	<b>\$32,220,308</b>	<b>\$33,455,887</b>	<b>393.46</b>	<b>\$34,351,597</b>	<b>389.23</b>	<b>\$895,710</b>	<b>2.7%</b>
Burley	\$5,283,305	\$6,172,446	\$6,595,577	\$6,968,511	81.04	\$6,844,293	76.85	(\$124,218)	-1.8%
Henley	\$6,934,345	\$7,155,003	\$7,893,537	\$7,756,570	91.51	\$8,126,739	93.87	\$370,169	4.8%
Journey	\$5,776,771	\$6,379,652	\$7,312,181	\$7,693,189	93.34	\$7,933,933	88.15	\$240,744	3.1%
Lakeside	\$5,119,104	\$5,056,625	\$5,588,529	\$5,746,799	65.14	\$6,020,033	68.79	\$273,234	4.8%
Walton	\$4,154,636	\$4,367,559	\$4,830,484	\$5,290,818	62.43	\$5,426,599	61.57	\$135,781	2.6%
<b>High Schools</b>	<b>\$40,025,900</b>	<b>\$38,574,693</b>	<b>\$42,774,029</b>	<b>\$48,458,363</b>	<b>526.84</b>	<b>\$50,628,667</b>	<b>531.87</b>	<b>\$2,170,304</b>	<b>4.5%</b>
Albemarle	\$17,534,069	\$16,540,034	\$18,028,732	\$20,447,891	226.90	\$22,016,827	229.95	\$1,568,936	7.7%
Monticello	\$11,320,846	\$11,233,902	\$12,429,882	\$14,189,435	151.86	\$14,279,381	150.90	\$89,946	0.6%
Western Albemarle	\$10,845,381	\$10,283,586	\$11,541,903	\$12,714,290	135.32	\$12,956,352	136.36	\$242,062	1.9%
Center I	\$325,604	\$517,171	\$773,512	\$1,106,747	12.76	\$1,376,107	14.66	\$269,360	24.3%
<b>Community Lab School</b>	<b>\$2,225,687</b>	<b>\$2,384,459</b>	<b>\$2,704,257</b>	<b>\$2,790,475</b>	<b>33.32</b>	<b>\$3,064,915</b>	<b>32.21</b>	<b>\$274,440</b>	<b>9.8%</b>
<b>CATEC</b>	<b>\$1,770,408</b>	<b>\$1,773,175</b>	<b>\$2,230,972</b>	<b>\$2,365,304</b>	<b>3.33</b>	<b>\$2,604,023</b>	<b>5.00</b>	<b>\$238,719</b>	<b>10.1%</b>
<b>Post High</b>		<b>\$419,416</b>	<b>\$483,620</b>	<b>\$550,781</b>	<b>9.33</b>	<b>\$714,490</b>	<b>12.00</b>	<b>\$163,709</b>	<b>29.7%</b>
<b>Center For Learning &amp; Growth</b>		<b>\$196,923</b>	<b>\$387,448</b>	<b>\$462,333</b>	<b>4.34</b>	<b>\$407,513</b>	<b>4.34</b>	<b>(\$54,820)</b>	<b>-11.9%</b>
<b>Multi-School Services</b>	<b>\$6,049,813</b>	<b>\$6,370,722</b>	<b>\$7,690,279</b>	<b>\$11,543,512</b>	<b>114.15</b>	<b>\$12,474,520</b>	<b>121.81</b>	<b>\$931,008</b>	<b>8.1%</b>
<b>Total</b>	<b>\$140,653,501</b>	<b>\$141,609,000</b>	<b>\$157,531,147</b>	<b>\$172,850,183</b>	<b>1,982.21</b>	<b>\$187,117,803</b>	<b>2,100.24</b>	<b>\$14,267,620</b>	<b>8.3%</b>

# AGNOR-HURT ELEMENTARY SCHOOL

*Home of the Alligators*

## Agnor-Hurt Elementary

### General School Information

- Grades Served: PK-5
- Address: 3201 Berkmar Drive, Charlottesville, VA 22901
- Phone: 434-973-5211
- Principal: Michael Irani

Agnor-Hurt is an elementary school that serves children on the northern edge of Charlottesville. Our community spans 4.1 square miles of Albemarle County along the Rio Road/Hydraulic Road corridor between the city limits of Charlottesville and Albemarle High School. Our core purpose is to establish a community of young learners by learning through building relationships, creating relevance, and holding to high levels of rigor for each and every child every single day.



**Michael Irani**  
Principal  
2021-Present



### School Quality Profile

For the 2021-22 school year, Agnor-Hurt received a full accreditation status. To view Agnor-Hurt's full School Quality Profile, scan the QR code to the left or visit the [VDOE Agnor-Hurt Elementary School Quality Profile](#) web page.

### Student Enrollment

#### Historical Fall Membership<sup>^</sup>

	2020-2021	2021-2022	2022-2023
Total Enrollment	432	452	438
Students with Disabilities	10.2%	11.1%	12.8%
English Learners	22.5%	25.7%	26.3%
Economically Disadvantaged	47.0%	50.2%	46.3%

#### Projections for FY 24 Budget

Projected	
Total Enrollment	447
K-5 Enrollment	393
Pre-School Enrollment	54
Economically Disadvantaged	53.1%



### Facility Information

- Built in 1992
- 80,956 square feet
- 19.5-acre site

*Agnor-Hurt Elementary School is part of the **Northern Feeder Pattern**. Students continue to either Burley or Journey Middle School and will graduate from Albemarle High School.*

<sup>^</sup> Excludes students who are served in placements outside of ACPS. Does not include MACAA Head Start preschool enrollment.

# AGNOR-HURT ELEMENTARY SCHOOL

*Home of the Alligators*

Expense	Agnor-Hurt					23 Adopted vs. 24 Request	
	19-20 Actuals	20-21 Actuals	21-22 Actuals	22-23 Adopted	23-24 Request	Increase	% Increase
Salary	\$3,274,675	\$3,150,680	\$3,451,451	\$3,590,164	\$3,834,910	\$244,746	6.8%
Other Wages	\$107,368	\$229,157	\$201,070	\$74,122	\$101,101	\$26,979	36.4%
Benefits	\$1,290,047	\$1,298,663	\$1,300,673	\$1,356,642	\$1,552,039	\$195,397	14.4%
Operations	\$81,421	\$75,699	\$105,418	\$76,401	\$81,721	\$5,320	7.0%
<b>Total</b>	<b>\$4,753,511</b>	<b>\$4,754,199</b>	<b>\$5,058,613</b>	<b>\$5,097,329</b>	<b>\$5,569,771</b>	<b>\$472,442</b>	<b>9.3%</b>

State Category Report	19-20 Actuals	20-21 Actuals	21-22 Actuals	22-23 Adopted	23-24 Request	Increase	% Increase
Instruction	\$4,445,589	\$4,407,715	\$4,712,547	\$4,687,063	\$5,151,939	\$464,876	9.9%
Admin/Attend&Health	\$59,292	\$63,123	\$78,032	\$70,552	\$82,376	\$11,824	16.8%
Technology	\$77,337	\$78,170	\$78,277	\$82,025	\$99,252	\$17,227	21.0%
Building Services	\$171,292	\$205,191	\$189,758	\$257,689	\$236,204	(\$21,485)	-8.3%
<b>Total</b>	<b>\$4,753,511</b>	<b>\$4,754,199</b>	<b>\$5,058,613</b>	<b>\$5,097,329</b>	<b>\$5,569,771</b>	<b>\$472,442</b>	<b>9.3%</b>

FTE Summary	22-23 FTE	23-24 FTE
<input type="checkbox"/> <b>Instruction</b>	<b>53.47</b>	<b>60.82</b>
Assistant Principal	1.00	1.00
Clerical	2.00	2.00
Principal	1.00	1.00
Teacher^	40.73	39.40
Teaching Assistant	8.74	17.42
<input type="checkbox"/> <b>Admin/Attend&amp;Health</b>	<b>1.00</b>	<b>1.00</b>
Nurse	1.00	1.00
<input type="checkbox"/> <b>Technology</b>	<b>1.00</b>	<b>1.20</b>
Other Technical	0.50	0.60
Teacher^	0.50	0.60
<input type="checkbox"/> <b>Building Services</b>	<b>4.50</b>	<b>4.50</b>
Custodial	4.50	4.50
<b>Total</b>	<b>59.97</b>	<b>67.52</b>

Adjusted FTE^^	55.6	58.8
----------------	------	------

^Positions included within the Teacher category are detailed in Section G – Staffing Allocations.

^^ Teaching Assistants (TAs) are allocated at a 2 TA to 1 Teacher ratio. This adjusted number is the FTE allocation to the school.



# BAKER-BUTLER ELEMENTARY SCHOOL

*Home of the Bears*

## Baker-Butler Elementary

### General School Information

- Grades Served: PK-5
- Address: 2740 Proffit Road, Charlottesville, VA 22911
- Phone: 434-974-7777
- Principal: Seth Kennard

Baker-Butler Elementary School is a 2020 United States Department of Education Blue Ribbon School where teachers are striving to create personalized learning experiences for students through engaging, passion-based, and data-informed approaches for instruction. Staff build individual relationships with students and families, and they utilize common pre- and post-assessments to ensure that each child is appropriately challenged, supported, and empowered in their educational journey.



**Seth Kennard**  
Principal  
2019-Present



### School Quality Profile

For the 2021-22 school year, Baker-Butler received a full accreditation status. For the full School Quality Profile, scan the QR code to the left or visit the [VDOE Baker-Butler Elementary School Quality Profile](#) web page.

### Student Enrollment

#### Historical Fall Membership<sup>^</sup>

	2020-2021	2021-2022	2022-2023
Total Enrollment	635	681	740
Students with Disabilities	12.3%	11.7%	13.0%
English Learners	12.1%	14.0%	14.9%
Economically Disadvantaged	26.8%	23.8%	28.4%

#### Projections for FY 24 Budget

	Projected
Total Enrollment	759
K-5 Enrollment	747
Pre-School Enrollment	12
Economically Disadvantaged	30.3%



### Facility Information

- Built in 2002
- 91,576 square feet
- 55.0-acre site

*Baker-Butler Elementary School is part of the **Northern Feeder Pattern**. Students continue to Lakeside Middle School and will graduate from Albemarle High School.*

<sup>^</sup> Excludes students who are served in placements outside of ACPS. Does not include MACAA Head Start preschool enrollment.  
School Locations: D-14

# BAKER-BUTLER ELEMENTARY SCHOOL

## Home of the Bears

Baker-Butler					23 Adopted vs. 24 Request		
Expense	19-20 Actuals	20-21 Actuals	21-22 Actuals	22-23 Adopted	23-24 Request	Increase	% Increase
Salary	\$4,138,692	\$4,254,282	\$4,710,822	\$5,009,055	\$6,098,606	\$1,089,551	21.8%
Other Wages	\$208,561	\$192,349	\$223,397	\$132,812	\$207,565	\$74,753	56.3%
Benefits	\$1,580,647	\$1,671,235	\$1,797,149	\$1,964,639	\$2,483,154	\$518,515	26.4%
Operations	\$86,817	\$118,223	\$97,581	\$108,160	\$119,368	\$11,208	10.4%
Total	\$6,014,717	\$6,236,089	\$6,828,950	\$7,214,666	\$8,908,693	\$1,694,027	23.5%
State Category Report	19-20 Actuals	20-21 Actuals	21-22 Actuals	22-23 Adopted	23-24 Request	Increase	% Increase
Instruction	\$5,672,772	\$5,903,999	\$6,404,251	\$6,766,617	\$8,420,335	\$1,653,718	24.4%
Admin/Attend&Health	\$55,224	\$30,846	\$64,188	\$60,635	\$61,672	\$1,037	1.7%
Technology	\$93,170	\$81,663	\$92,755	\$100,107	\$121,245	\$21,138	21.1%
Building Services	\$193,551	\$219,580	\$267,756	\$287,307	\$305,441	\$18,134	6.3%
Total	\$6,014,717	\$6,236,089	\$6,828,950	\$7,214,666	\$8,908,693	\$1,694,027	23.5%
FTE Summary				22-23 FTE	23-24 FTE		
☐ Instruction				81.10	100.92		
Assistant Principal				2.00	2.00		
Clerical				3.17	3.00		
Principal				1.00	1.00		
Teacher^				59.63	65.64		
Teaching Assistant				15.30	29.28		
☐ Admin/Attend&Health				1.00	1.00		
Nurse				1.00	1.00		
☐ Technology				1.10	1.30		
Other Technical				0.50	0.70		
Teacher^				0.60	0.60		
☐ Building Services				5.25	5.25		
Custodial				5.25	5.25		
Total				88.45	108.47		
Adjusted FTE^^				80.8	93.8		

^Positions included within the Teacher category are detailed in Section G – Staffing Allocations.

^^ Teaching Assistants (TAs) are allocated at a 2 TA to 1 Teacher ratio. This adjusted number is the FTE allocation to the school.



# BROADUS WOOD ELEMENTARY SCHOOL

*Home of the Bobcats*

## Broadus Wood Elementary

### General School Information

- Grades Served: PK-5
- Address: 185 Buck Mountain Road, Earlysville, VA 22936
- Phone: 434-973-3865
- Principal: Amy Morris

At Broadus Wood Elementary School, educators and parents work together to foster a dynamic learning community that promotes academic excellence, character development, and lifelong-learning skills. We believe our work empowers students to thrive as well-rounded, productive citizens who will be positioned to succeed well beyond elementary school. Students here develop a love of learning; learn to work collaboratively and independently; and demonstrate respect for and appreciation of others.



**Amy Morris**  
Principal  
2016-Present



### School Quality Profile

For the 2021-22 school year, Broadus Wood received a full accreditation status. For the full School Quality Profile, scan the QR code to the left or visit [the VDOE Broadus Wood Elementary School Quality Profile](#) web page.

### Student Enrollment

#### Historical Fall Membership<sup>^</sup>

	2020-2021	2021-2022	2022-2023
Total Enrollment	252	259	286
Students with Disabilities	11.5%	12.7%	13.3%
English Learners	1.2%	1.9%	4.9%
Economically Disadvantaged	16.7%	16.6%	19.9%

#### Projections for FY 24 Budget

	Projected
Total Enrollment	294
K-5 Enrollment	274
Pre-School Enrollment	20
Economically Disadvantaged	17.8%



### Facility Information

- Built in 1936
- 49,852 square feet
- 11.7-acre site

*Broadus Wood Elementary School is part of the **Northern Feeder Pattern**. Students continue to Journey Middle School and will graduate from Albemarle High School.*

<sup>^</sup> Excludes students who are served in placements outside of ACPS. Does not include MACAA Head Start preschool enrollment.  
School Locations: D-16

# BROADUS WOOD ELEMENTARY SCHOOL

## Home of the Bobcats

### Broadus Wood

### 23 Adopted vs. 24 Request

Expense	19-20 Actuals	20-21 Actuals	21-22 Actuals	22-23 Adopted	23-24 Request	Increase	% Increase
Salary	\$1,932,944	\$1,885,522	\$2,152,919	\$2,402,825	\$2,867,249	\$464,424	19.3%
Other Wages	\$43,241	\$92,991	\$129,619	\$41,779	\$65,647	\$23,868	57.1%
Benefits	\$778,171	\$804,171	\$885,888	\$998,641	\$1,138,544	\$139,903	14.0%
Operations	\$46,283	\$39,074	\$49,419	\$56,849	\$66,207	\$9,358	16.5%
<b>Total</b>	<b>\$2,800,640</b>	<b>\$2,821,758</b>	<b>\$3,217,846</b>	<b>\$3,500,094</b>	<b>\$4,137,647</b>	<b>\$637,553</b>	<b>18.2%</b>

State Category Report	19-20 Actuals	20-21 Actuals	21-22 Actuals	22-23 Adopted	23-24 Request	Increase	% Increase
Instruction	\$2,597,371	\$2,602,393	\$2,954,560	\$3,206,824	\$3,850,592	\$643,768	20.1%
Admin/Attend&Health	\$52,410	\$53,985	\$67,546	\$60,808	\$65,578	\$4,770	7.8%
Technology	\$52,450	\$56,314	\$51,139	\$58,070	\$56,980	(\$1,090)	-1.9%
Building Services	\$98,409	\$109,066	\$144,602	\$174,392	\$164,497	(\$9,895)	-5.7%
<b>Total</b>	<b>\$2,800,640</b>	<b>\$2,821,758</b>	<b>\$3,217,846</b>	<b>\$3,500,094</b>	<b>\$4,137,647</b>	<b>\$637,553</b>	<b>18.2%</b>

FTE Summary	22-23 FTE	23-24 FTE
<b>Instruction</b>	<b>38.31</b>	<b>47.53</b>
Assistant Principal	1.00	1.00
Clerical	2.00	2.00
Principal	1.00	1.00
Teacher^	25.55	27.24
Teaching Assistant	8.76	16.29
<b>Admin/Attend&amp;Health</b>	<b>1.00</b>	<b>1.00</b>
Nurse	1.00	1.00
<b>Technology</b>	<b>0.60</b>	<b>0.73</b>
Other Technical	0.20	0.40
Teacher^	0.40	0.33
<b>Building Services</b>	<b>3.00</b>	<b>3.00</b>
Custodial	3.00	3.00
<b>Total</b>	<b>42.91</b>	<b>52.26</b>

Adjusted FTE^^	38.5	44.1
----------------	------	------

^Positions included within the Teacher category are detailed in Section G – Staffing Allocations.

^^ Teaching Assistants (TAs) are allocated at a 2 TA to 1 Teacher ratio. This adjusted number is the FTE allocation to the school.

# BROWNSVILLE ELEMENTARY SCHOOL

*Home of the Bees*

## Brownsville Elementary

### General School Information

- Grades Served: PK-5
- Address: 5870 Rockfish Gap Turnpike, Crozet, VA 22932
- Phone: 434-823-4658
- Principal: Jason Crutchfield

Brownsville Elementary opened in 1966 to serve the public education needs of the Greenwood and Crozet community. The school follows the objectives of the division's strategic plan, *Learning for All*, and its mission for equity. Brownsville students are Safe and Caring Learners. Brownsville is a Responsive Classroom school providing engaging instruction that can be observed through continuous improvement, student leadership opportunities and effective learning partnerships.



**Jason Crutchfield**  
Principal  
2016-Present



### School Quality Profile

For the 2021-22 school year, Brownsville received a full accreditation status. For the full School Quality Profile, scan the QR code to the left or visit the [VDOE Brownsville Elementary School Quality Profile](#) web page.

### Student Enrollment

#### Historical Fall Membership<sup>^</sup>

	2020-2021	2021-2022	2022-2023
Total Enrollment	729	756	591
Students with Disabilities	8.8%	9.7%	11.7%
English Learners	1.1%	1.5%	2.2%
Economically Disadvantaged	13.7%	13.1%	16.9%

#### Projections for FY 24 Budget

Projected	
Total Enrollment	581
K-5 Enrollment	569
Pre-School Enrollment	12
Economically Disadvantaged	16.4%



### Facility Information

- Built in 1966
- 90,550 square feet
- 19.5-acre site

*Brownsville Elementary School is part of the **Western Feeder Pattern**. Students continue to Henley Middle School and will graduate from Western Albemarle High School.*

<sup>^</sup> Excludes students who are served in placements outside of ACPS. Does not include MACAA Head Start preschool enrollment.  
School Locations: D-18

# BROWNSVILLE ELEMENTARY SCHOOL

## Home of the Bees

Brownsville						23 Adopted vs. 24 Request	
Expense	19-20 Actuals	20-21 Actuals	21-22 Actuals	22-23 Adopted	23-24 Request	Increase	% Increase
Salary	\$4,486,996	\$4,563,022	\$5,075,857	\$3,978,105	\$4,553,661	\$575,556	14.5%
Other Wages	\$186,979	\$184,244	\$223,185	\$114,810	\$152,995	\$38,185	33.3%
Benefits	\$1,840,857	\$1,944,945	\$2,034,940	\$1,552,146	\$1,888,321	\$336,175	21.7%
Operations	\$100,126	\$83,245	\$136,267	\$114,385	\$121,311	\$6,926	6.1%
<b>Total</b>	<b>\$6,614,957</b>	<b>\$6,775,456</b>	<b>\$7,470,249</b>	<b>\$5,759,446</b>	<b>\$6,716,288</b>	<b>\$956,842</b>	<b>16.6%</b>
State Category Report	19-20 Actuals	20-21 Actuals	21-22 Actuals	22-23 Adopted	23-24 Request	Increase	% Increase
Instruction	\$6,222,667	\$6,401,031	\$7,000,267	\$5,209,032	\$6,153,995	\$944,963	18.1%
Admin/Attend&Health	\$58,956	\$61,306	\$70,936	\$71,048	\$76,026	\$4,978	7.0%
Technology	\$137,662	\$96,376	\$156,158	\$165,411	\$168,033	\$2,622	1.6%
Building Services	\$195,671	\$216,742	\$242,888	\$313,955	\$318,234	\$4,279	1.4%
<b>Total</b>	<b>\$6,614,957</b>	<b>\$6,775,456</b>	<b>\$7,470,249</b>	<b>\$5,759,446</b>	<b>\$6,716,288</b>	<b>\$956,842</b>	<b>16.6%</b>
FTE Summary	22-23 FTE		23-24 FTE				
<input type="checkbox"/> <b>Instruction</b>	<b>62.20</b>		<b>73.54</b>				
Assistant Principal	1.00		1.00				
Clerical	2.50		2.50				
Principal	1.00		1.00				
Teacher^	44.90		45.51				
Teaching Assistant	12.80		23.53				
<input type="checkbox"/> <b>Admin/Attend&amp;Health</b>	<b>1.00</b>		<b>1.00</b>				
Nurse	1.00		1.00				
<input type="checkbox"/> <b>Technology</b>	<b>1.60</b>		<b>1.60</b>				
Other Technical	0.60		0.60				
Teacher^	1.00		1.00				
<input type="checkbox"/> <b>Building Services</b>	<b>5.75</b>		<b>5.75</b>				
Custodial	5.75		5.75				
<b>Total</b>	<b>70.55</b>		<b>81.89</b>				
Adjusted FTE^^	64.2		70.1				

^Positions included within the Teacher category are detailed in Section G – Staffing Allocations.

^^ Teaching Assistants (TAs) are allocated at a 2 TA to 1 Teacher ratio. This adjusted number is the FTE allocation to the school.



# CROZET ELEMENTARY SCHOOL

*Home of the Eagles*

## Crozet Elementary

### General School Information

- Grades Served: PK-5
- Address: 1407 Crozet Avenue, Crozet, VA 22932
- Phone: 434-823-4800
- Principal: Staci England

The objective of Crozet Elementary is to empower our students to learn creatively and innovatively to discover their interests and talents and grow into lifelong contributors to our local and global community. Crozet Elementary makes every effort to know each student; nurture their mental and physical well-being and maximize their potential and talents through culturally responsive teaching, Responsive Classroom approaches, project/problem/passion-based learning and environmental stewardship.



**Staci England**  
Principal  
2022-Present



### School Quality Profile

For the 2021-22 school year, Crozet Elementary received a full accreditation status. For the full School Quality Profile, scan the QR code to the left or visit the [VDOE Crozet Elementary School Quality Profile](#) web page.

### Student Enrollment

#### Historical Fall Membership<sup>^</sup>

	2020-2021	2021-2022	2022-2023
Total Enrollment	327	324	513
Students with Disabilities	8.9%	10.2%	6.8%
English Learners	3.4%	2.5%	1.6%
Economically Disadvantaged	24.5%	18.2%	15.8%

#### Projections for FY 24 Budget

Projected	
Total Enrollment	610
K-5 Enrollment	562
Pre-School Enrollment	48
Economically Disadvantaged	15.5%



### Facility Information

- Built in 1990
- 90,653 square feet
- 21.2-acre site

*Crozet Elementary School is part of the **Western Feeder Pattern**. Students continue to Henley Middle School and will graduate from Western Albemarle High School.*

<sup>^</sup> Excludes students who are served in placements outside of ACPS. Does not include MACAA Head Start preschool enrollment.  
School Locations: D-20

# CROZET ELEMENTARY SCHOOL

## Home of the Eagles

Crozet						23 Adopted vs. 24 Request	
Expense	19-20 Actuals	20-21 Actuals	21-22 Actuals	22-23 Adopted	23-24 Request	Increase	% Increase
Salary	\$2,223,988	\$2,144,835	\$2,342,140	\$3,768,074	\$3,985,582	\$217,508	5.8%
Other Wages	\$61,493	\$92,611	\$135,083	\$92,293	\$146,920	\$54,627	59.2%
Benefits	\$814,012	\$816,224	\$896,150	\$1,484,632	\$1,589,021	\$104,389	7.0%
Operations	\$53,845	\$66,744	\$58,303	\$125,794	\$121,542	(\$4,252)	-3.4%
<b>Total</b>	<b>\$3,153,338</b>	<b>\$3,120,415</b>	<b>\$3,431,675</b>	<b>\$5,470,793</b>	<b>\$5,843,065</b>	<b>\$372,272</b>	<b>6.8%</b>
State Category Report	19-20 Actuals	20-21 Actuals	21-22 Actuals	22-23 Adopted	23-24 Request	Increase	% Increase
Instruction	\$2,867,829	\$2,833,590	\$3,066,962	\$5,001,080	\$5,467,325	\$466,245	9.3%
Admin/Attend&Health	\$59,285	\$50,636	\$58,654	\$57,177	\$59,134	\$1,957	3.4%
Technology	\$77,861	\$82,277	\$94,622	\$103,182	\$77,801	(\$25,381)	-24.6%
Building Services	\$148,363	\$153,911	\$211,437	\$309,354	\$238,805	(\$70,549)	-22.8%
<b>Total</b>	<b>\$3,153,338</b>	<b>\$3,120,415</b>	<b>\$3,431,675</b>	<b>\$5,470,793</b>	<b>\$5,843,065</b>	<b>\$372,272</b>	<b>6.8%</b>
FTE Summary	22-23 FTE		23-24 FTE				
<input type="checkbox"/> <b>Instruction</b>	<b>55.55</b>		<b>61.37</b>				
Assistant Principal	1.00		1.00				
Clerical	2.50		2.50				
Principal	1.00		1.00				
Teacher^	44.75		44.34				
Teaching Assistant	6.30		12.53				
<input type="checkbox"/> <b>Admin/Attend&amp;Health</b>	<b>1.00</b>		<b>1.00</b>				
Nurse	1.00		1.00				
<input type="checkbox"/> <b>Technology</b>	<b>1.00</b>		<b>0.80</b>				
Other Technical	0.40		0.40				
Teacher^	0.60		0.40				
<input type="checkbox"/> <b>Building Services</b>	<b>5.35</b>		<b>3.50</b>				
Custodial	5.35		3.50				
<b>Total</b>	<b>62.90</b>		<b>66.67</b>				
Adjusted FTE^^	59.8		60.4				

^Positions included within the Teacher category are detailed in Section G – Staffing Allocations.

^^ Teaching Assistants (TAs) are allocated at a 2 TA to 1 Teacher ratio. This adjusted number is the FTE allocation to the school.

# GREER ELEMENTARY SCHOOL

*Home of the Geckos*

## Greer Elementary

### General School Information

- Grades Served: PK-5
- Address: 190 Lambs Lane, Charlottesville, VA 22901
- Phone: 434-973-8371
- Principal: Stephen Saunders

At Greer, we will change lives and our community. We will reach and challenge every student, every day. Just as we have become leaders in utilizing the Responsive Classroom approach, our goal is to become leaders in eliminating achievement gaps and providing equitable outcomes and opportunities for all students. As the division's most diverse K-5 school, we are committed to creating equal opportunity for every one of our children through an educational program focused on the individual student.



**Steve Saunders**  
Principal  
2019-Present



### School Quality Profile

For the 2021-22 school year, Greer received a status of accredited with conditions. For the full School Quality Profile, scan the QR code to the left or visit the [VDOE Greer Elementary School Quality Profile](#) web page.

### Student Enrollment

#### Historical Fall Membership<sup>^</sup>

	2020-2021	2021-2022	2022-2023
Total Enrollment	469	480	494
Students with Disabilities	13.6%	12.5%	13.8%
English Learners	34.5%	33.5%	35.2%
Economically Disadvantaged	63.3%	53.8%	52.2%

#### Projections for FY 24 Budget

Projected	
Total Enrollment	466
K-5 Enrollment	446
Pre-School Enrollment	20
Economically Disadvantaged	68.2%



### Facility Information

- Built in 1974
- 99,258 square feet
- 15.0-acre site

*Greer Elementary School is part of the **Northern Feeder Pattern**. Students continue to Journey Middle School and will graduate from Albemarle High School.*

<sup>^</sup> Excludes students who are served in placements outside of ACPS. Does not include MACAA Head Start preschool enrollment.  
School Locations: D-22



# GREER ELEMENTARY SCHOOL

## Home of the Geckos

Greer					23 Adopted vs. 24 Request		
Expense	19-20 Actuals	20-21 Actuals	21-22 Actuals	22-23 Adopted	23-24 Request	Increase	% Increase
Salary	\$3,960,074	\$3,642,080	\$3,853,749	\$4,073,872	\$4,795,841	\$721,969	17.7%
Other Wages	\$108,043	\$172,629	\$318,978	\$81,194	\$121,001	\$39,807	49.0%
Benefits	\$1,493,722	\$1,462,562	\$1,458,380	\$1,547,432	\$1,954,187	\$406,755	26.3%
Operations	\$68,264	\$88,922	\$90,789	\$100,083	\$97,617	(\$2,466)	-2.5%
Total	\$5,630,102	\$5,366,192	\$5,721,895	\$5,802,581	\$6,968,646	\$1,166,065	20.1%
State Category Report	19-20 Actuals	20-21 Actuals	21-22 Actuals	22-23 Adopted	23-24 Request	Increase	% Increase
Instruction	\$5,298,867	\$5,051,936	\$5,354,064	\$5,399,723	\$6,507,211	\$1,107,488	20.5%
Admin/Attend&Health	\$46,785	\$47,137	\$62,399	\$53,817	\$59,679	\$5,862	10.9%
Technology	\$83,014	\$51,065	\$54,302	\$83,046	\$98,625	\$15,579	18.8%
Building Services	\$201,436	\$216,054	\$251,130	\$265,995	\$303,131	\$37,136	14.0%
Total	\$5,630,102	\$5,366,192	\$5,721,895	\$5,802,581	\$6,968,646	\$1,166,065	20.1%
FTE Summary				22-23 FTE	23-24 FTE		
Instruction				63.34	77.76		
Assistant Principal				1.00	1.00		
Clerical				2.50	2.50		
Principal				1.00	1.00		
Teacher^				48.44	50.29		
Teaching Assistant				10.40	22.97		
Admin/Attend&Health				1.00	1.00		
Nurse				1.00	1.00		
Technology				1.00	1.10		
Other Technical				0.40	0.60		
Teacher^				0.60	0.50		
Building Services				4.75	5.00		
Custodial				4.75	5.00		
Total				70.09	84.86		
Adjusted FTE^^				64.9	73.4		

^Positions included within the Teacher category are detailed in Section G – Staffing Allocations.

^^ Teaching Assistants (TAs) are allocated at a 2 TA to 1 Teacher ratio. This adjusted number is the FTE allocation to the school.

# HOLLYMEAD ELEMENTARY SCHOOL

*Home of the Hornets*

## Hollymead Elementary

### General School Information

- Grades Served: PK-5
- Address: 2775 Powell Creek Drive Charlottesville, VA 22911
- Phone: 434-973-8301
- Principal: Joe McCauley

Hollymead is a PK-5 elementary school that utilizes student curiosity and an arts integrated curriculum to improve academic and social outcomes for all students. Hollymead, along with its strong and diverse community, creates and expands partnerships, including those with local businesses and our families of military personnel. We strive to embrace the uniqueness of our students, staff, and families, and aim to prioritize our students' health, wellness and social-emotional and academic development.



**Joe McCauley**  
Principal  
2022-Present



### School Quality Profile

For the 2021-22 school year, Hollymead received a full accreditation status. For the full School Quality Profile, scan the QR code to the left or visit the VDOE [Hollymead Elementary School Quality Profile](#) web page.

### Student Enrollment

#### Historical Fall Membership<sup>^</sup>

	2020-2021	2021-2022	2022-2023
Total Enrollment	349	339	351
Students with Disabilities	15.2%	15.3%	14.8%
English Learners	9.7%	6.8%	7.7%
Economically Disadvantaged	13.2%	12.4%	17.7%

#### Projections for FY 24 Budget

	Projected
Total Enrollment	398
K-5 Enrollment	342
Pre-School Enrollment	56
Economically Disadvantaged	14.9%



### Facility Information

- Built in 1972
- 66,437 square feet
- 20.1-acre site

*Hollymead Elementary School is part of the **Northern Feeder Pattern**. Students continue to Lakeside Middle School and will graduate from Albemarle High School.*

<sup>^</sup> Excludes students who are served in placements outside of ACPS. Does not include MACAA Head Start preschool enrollment.

# HOLLYMEAD ELEMENTARY SCHOOL

## Home of the Hornets

Hollymead					23 Adopted vs. 24 Request		
Expense	19-20 Actuals	20-21 Actuals	21-22 Actuals	22-23 Adopted	23-24 Request	Increase	% Increase
Salary	\$2,787,968	\$2,715,379	\$2,788,046	\$2,839,752	\$3,280,940	\$441,188	15.5%
Other Wages	\$82,139	\$95,633	\$234,222	\$62,328	\$90,660	\$28,332	45.5%
Benefits	\$1,078,986	\$1,077,162	\$1,077,901	\$1,110,637	\$1,400,172	\$289,535	26.1%
Operations	\$48,564	\$78,810	\$55,639	\$72,866	\$75,702	\$2,836	3.9%
Total	\$3,997,658	\$3,966,983	\$4,155,807	\$4,085,583	\$4,847,474	\$761,891	18.6%
State Category Report	19-20 Actuals	20-21 Actuals	21-22 Actuals	22-23 Adopted	23-24 Request	Increase	% Increase
Instruction	\$3,616,096	\$3,668,260	\$3,852,440	\$3,752,483	\$4,472,180	\$719,697	19.2%
Admin/Attend&Health	\$92,511	\$59,447	\$48,449	\$48,797	\$63,263	\$14,466	29.6%
Technology	\$36,647	\$61,248	\$45,083	\$54,872	\$69,812	\$14,940	27.2%
Building Services	\$252,404	\$178,028	\$209,836	\$229,431	\$242,219	\$12,788	5.6%
Total	\$3,997,658	\$3,966,983	\$4,155,807	\$4,085,583	\$4,847,474	\$761,891	18.6%
FTE Summary				22-23 FTE	23-24 FTE		
☐ Instruction				42.66	56.03		
Assistant Principal				1.00	1.00		
Clerical				2.00	2.00		
Principal				1.00	1.00		
Teacher^				30.38	30.74		
Teaching Assistant				8.28	21.29		
☐ Admin/Attend&Health				1.00	1.00		
Nurse				1.00	1.00		
☐ Technology				0.70	0.80		
Other Technical				0.40	0.40		
Teacher^				0.30	0.40		
☐ Building Services				4.00	4.00		
Custodial				4.00	4.00		
Total				48.36	61.83		
Adjusted FTE^^				44.2	51.2		

^Positions included within the Teacher category are detailed in Section G – Staffing Allocations.

^^ Teaching Assistants (TAs) are allocated at a 2 TA to 1 Teacher ratio. This adjusted number is the FTE allocation to the school.

# MERIWETHER LEWIS ELEMENTARY SCHOOL

*Home of the Bluebirds*

Meriwether Lewis Elementary (Ivy Elementary School as of July 2023)

## General School Information

- Grades Served: K-5
- Address: 1610 Owensville Road, Charlottesville, VA 22901
- Phone: 434-293-9304
- Principal: Jennifer Underwood

Meriwether Lewis Elementary School is a caring community that lifts and supports one another. Our staff is responsive to the individual needs of students and works to create a warm, inclusive classroom and is dedicated to the study of Culturally Responsive Teaching, Responsive Classroom, and differentiated instruction.

After undergoing a [School Naming Review](#), Meriwether Lewis Elementary School will officially become Ivy Elementary School on July 1, 2023.



**Jennifer Underwood**  
Principal  
2021-Present



## School Quality Profile

For the 2021-22 school year, Meriwether Lewis received a full accreditation status. For the full School Quality Profile, scan the QR code to the left or visit the [VDOE Meriwether Lewis Elementary School Quality Profile](#) web page.

## Student Enrollment

### Historical Fall Membership<sup>^</sup>

	2020-2021	2021-2022	2022-2023
Total Enrollment	323	321	343
Students with Disabilities	8.7%	10.0%	9.3%
English Learners	1.2%	1.2%	2.6%
Economically Disadvantaged	9.6%	7.2%	7.6%

### Projections for FY 24 Budget

	Projected
Total Enrollment	377
K-5 Enrollment	347
Pre-School Enrollment	30
Economically Disadvantaged	8.0%



## Facility Information

- Built in 1988
- 56,450 square feet
- 17.7-acre site

*Meriwether Lewis Elementary School is part of the **Western Feeder Pattern**. Students continue to Henley Middle School and will graduate from Western Albemarle High School.*

<sup>^</sup> Excludes students who are served in placements outside of ACPS. Does not include MACAA Head Start preschool enrollment.  
School Locations: D-26

# MERIWETHER LEWIS ELEMENTARY SCHOOL

*Home of the Bluebirds*

Meriwether Lewis

23 Adopted vs. 24 Request

Expense	19-20 Actuals	20-21 Actuals	21-22 Actuals	22-23 Adopted	23-24 Request	Increase	% Increase
Salary	\$2,564,288	\$2,184,679	\$2,361,637	\$2,405,480	\$2,629,573	\$224,093	9.3%
Other Wages	\$76,475	\$81,908	\$172,737	\$75,416	\$90,691	\$15,275	20.3%
Benefits	\$1,030,475	\$901,956	\$935,009	\$950,751	\$1,052,936	\$102,185	10.7%
Operations	\$58,062	\$45,808	\$70,805	\$73,944	\$87,054	\$13,110	17.7%
<b>Total</b>	<b>\$3,729,299</b>	<b>\$3,214,351</b>	<b>\$3,540,188</b>	<b>\$3,505,591</b>	<b>\$3,860,254</b>	<b>\$354,663</b>	<b>10.1%</b>

State Category Report	19-20 Actuals	20-21 Actuals	21-22 Actuals	22-23 Adopted	23-24 Request	Increase	% Increase
Instruction	\$3,474,138	\$2,953,194	\$3,206,694	\$3,165,848	\$3,513,260	\$347,412	11.0%
Admin/Attend&Health	\$49,531	\$50,868	\$66,082	\$59,047	\$63,100	\$4,053	6.9%
Technology	\$62,306	\$60,787	\$93,865	\$96,624	\$80,824	(\$15,800)	-16.4%
Building Services	\$143,324	\$149,501	\$173,546	\$184,072	\$203,070	\$18,998	10.3%
<b>Total</b>	<b>\$3,729,299</b>	<b>\$3,214,351</b>	<b>\$3,540,188</b>	<b>\$3,505,591</b>	<b>\$3,860,254</b>	<b>\$354,663</b>	<b>10.1%</b>

FTE Summary	22-23 FTE	23-24 FTE
<b>Instruction</b>	<b>37.46</b>	<b>38.44</b>
Assistant Principal	1.00	1.00
Clerical	2.00	2.00
Principal	1.00	1.00
Teacher^	26.35	28.15
Teaching Assistant	7.11	6.29
<b>Admin/Attend&amp;Health</b>	<b>1.00</b>	<b>1.00</b>
Nurse	1.00	1.00
<b>Technology</b>	<b>1.10</b>	<b>1.00</b>
Other Technical	0.60	0.60
Teacher^	0.50	0.40
<b>Building Services</b>	<b>3.00</b>	<b>3.34</b>
Custodial	3.00	3.34
<b>Total</b>	<b>42.56</b>	<b>43.78</b>

Adjusted FTE^^	39.0	40.6
----------------	------	------

^Positions included within the Teacher category are detailed in Section G – Staffing Allocations.

^^ Teaching Assistants (TAs) are allocated at a 2 TA to 1 Teacher ratio. This adjusted number is the FTE allocation to the school.



# MOUNTAIN VIEW ELEMENTARY SCHOOL

*Home of the Colts*

## Mountain View Elementary

### General School Information

- Grades Served: PK-5
- Address: 1757 Avon Street Extended, Charlottesville, VA 22902
- Phone: 434-293-7455
- Principal: Cyndi Wells

Mountain View Elementary is a PK-5 school where all staff works together to improve academic, social-emotional, and personal outcomes for all students. Our vision is to empower our students to actively and confidently thrive every day, and our mission is for all students to achieve academic success to their best ability. Therefore, we embrace our diverse students and families. Together we value antiracism, bilingualism, and multiculturalism.



**Cyndi Wells**  
Principal  
2019-Present



### School Quality Profile

For the 2021-22 school year, Mountain View received a status of accredited with conditions. For the full School Quality Profile, scan the QR code to the left of visit the [VDOE Mountain View Elementary School Quality Profile](#) web page.

### Student Enrollment

#### Historical Fall Membership<sup>^</sup>

	2020-2021	2021-2022	2022-2023
Total Enrollment	692	724	750
Students with Disabilities	12.6%	12.7%	12.7%
English Learners	19.7%	18.5%	17.3%
Economically Disadvantaged	41.6%	38.4%	46.5%

#### Projections for FY 24 Budget

Projected	
Total Enrollment	728
K-5 Enrollment	728
Pre-School Enrollment	0
Economically Disadvantaged	42.9%



### Facility Information

- Built in 1990
- 92,307 square feet
- 16.1-acre site

*Mountain View Elementary School is part of the **Southern Feeder Pattern**. Students continue to Burley or Walton Middle School and will graduate from Monticello High School.*

<sup>^</sup> Excludes students who are served in placements outside of ACPS. Does not include MACAA Head Start preschool enrollment.  
School Locations: D-28

# MOUNTAIN VIEW ELEMENTARY SCHOOL

## Home of the Colts

### Mountain View

### 23 Adopted vs. 24 Request

Expense	19-20 Actuals	20-21 Actuals	21-22 Actuals	22-23 Adopted	23-24 Request	Increase	% Increase
Salary	\$4,909,910	\$4,647,510	\$5,287,020	\$5,814,826	\$6,606,385	\$791,559	13.6%
Other Wages	\$156,568	\$340,635	\$479,099	\$127,546	\$182,063	\$54,517	42.7%
Benefits	\$1,929,086	\$1,935,627	\$2,098,137	\$2,363,950	\$2,698,478	\$334,528	14.2%
Operations	\$103,241	\$101,863	\$116,533	\$119,206	\$139,410	\$20,204	16.9%
<b>Total</b>	<b>\$7,098,804</b>	<b>\$7,025,635</b>	<b>\$7,980,789</b>	<b>\$8,425,528</b>	<b>\$9,626,336</b>	<b>\$1,200,808</b>	<b>14.3%</b>

State Category Report	19-20 Actuals	20-21 Actuals	21-22 Actuals	22-23 Adopted	23-24 Request	Increase	% Increase
Instruction	\$6,749,641	\$6,716,124	\$7,496,251	\$7,993,703	\$9,030,487	\$1,036,784	13.0%
Admin/Attend&Health	\$58,919	\$62,914	\$108,844	\$68,889	\$74,810	\$5,921	8.6%
Technology	\$93,997	\$50,676	\$81,129	\$74,529	\$146,912	\$72,383	97.1%
Building Services	\$196,247	\$195,921	\$294,565	\$288,407	\$374,127	\$85,720	29.7%
<b>Total</b>	<b>\$7,098,804</b>	<b>\$7,025,635</b>	<b>\$7,980,789</b>	<b>\$8,425,528</b>	<b>\$9,626,336</b>	<b>\$1,200,808</b>	<b>14.3%</b>

FTE Summary	22-23 FTE	23-24 FTE
<b>Instruction</b>	<b>94.56</b>	<b>107.29</b>
Assistant Principal	2.00	2.00
Clerical	3.50	3.00
Principal	1.00	1.00
Teacher^	70.25	70.89
Teaching Assistant	17.81	30.40
<b>Admin/Attend&amp;Health</b>	<b>1.00</b>	<b>1.00</b>
Nurse	1.00	1.00
<b>Technology</b>	<b>0.80</b>	<b>1.60</b>
Other Technical		0.60
Teacher^	0.80	1.00
<b>Building Services</b>	<b>5.00</b>	<b>6.34</b>
Custodial	5.00	6.34
<b>Total</b>	<b>101.36</b>	<b>116.23</b>

Adjusted FTE^^	92.5	101.0
----------------	------	-------

^Positions included within the Teacher category are detailed in Section G – Staffing Allocations.

^^ Teaching Assistants (TAs) are allocated at a 2 TA to 1 Teacher ratio. This adjusted number is the FTE allocation to the school.



# MURRAY ELEMENTARY SCHOOL

*Home of the Mustangs*

## Murray Elementary

### General School Information

- Grades Served: PK-5
- Address: 3251 Morgantown Road, Charlottesville, VA 22903
- Phone: 434-977-4599
- Principal: C'ta DeLaurier

The mission of Murray Elementary School is to create a positive, safe and nurturing environment in which all children find success, happiness and a love for learning that remains with them throughout their life. We work daily to develop high levels of both cognitive growth and social-emotional well-being of the students in our learning community and collectively own student growth. We are also committed to developing a growth mindset in children and strong relationships with each child as well as teaching them how to develop positive relationships with others.



**C'ta DeLaurier**  
Principal  
2021-Present



### School Quality Profile

For the 2021-22 school year, Murray received a full accreditation status. For the full School Quality Profile, scan the QR code to the left or visit the [VDOE Murray Elementary School Quality Profile](#) web page.

### Student Enrollment

#### Historical Fall Membership<sup>^</sup>

	2020-2021	2021-2022	2022-2023
Total Enrollment	235	267	281
Students with Disabilities	11.5%	9.7%	8.5%
English Learners	2.6%	3.4%	3.9%
Economically Disadvantaged	8.1%	9.0%	8.5%

#### Projections for FY 24 Budget

	Projected
Total Enrollment	294
K-5 Enrollment	282
Pre-School Enrollment	12
Economically Disadvantaged	9.1%



### Facility Information

- Built in 1960
- 42,057 square feet
- 20.9-acre site

*Murray Elementary School is part of the **Western Feeder Pattern**. Students continue to Henley Middle School and will graduate from Western Albemarle High School.*

<sup>^</sup> Excludes students who are served in placements outside of ACPS. Does not include MACAA Head Start preschool enrollment.  
School Locations: D-30

# MURRAY ELEMENTARY SCHOOL

*Home of the Mustangs*

Murray					23 Adopted vs. 24 Request		
Expense	19-20 Actuals	20-21 Actuals	21-22 Actuals	22-23 Adopted	23-24 Request	Increase	% Increase
Salary	\$1,933,003	\$1,894,130	\$2,120,818	\$2,523,485	\$2,620,117	\$96,632	3.8%
Other Wages	\$30,097	\$72,359	\$141,048	\$44,834	\$73,810	\$28,976	64.6%
Benefits	\$760,033	\$751,423	\$803,703	\$1,002,609	\$1,054,813	\$52,204	5.2%
Operations	\$48,014	\$40,736	\$64,542	\$49,273	\$67,241	\$17,968	36.5%
Total	\$2,771,147	\$2,758,647	\$3,130,111	\$3,620,201	\$3,815,981	\$195,780	5.4%
State Category Report	19-20 Actuals	20-21 Actuals	21-22 Actuals	22-23 Adopted	23-24 Request	Increase	% Increase
Instruction	\$2,516,001	\$2,529,975	\$2,865,773	\$3,323,976	\$3,538,796	\$214,820	6.5%
Admin/Attend&Health	\$77,367	\$43,167	\$51,987	\$48,879	\$53,046	\$4,167	8.5%
Technology	\$67,352	\$46,510	\$63,028	\$74,248	\$58,698	(\$15,550)	-20.9%
Building Services	\$110,427	\$138,995	\$149,324	\$173,098	\$165,441	(\$7,657)	-4.4%
Total	\$2,771,147	\$2,758,647	\$3,130,111	\$3,620,201	\$3,815,981	\$195,780	5.4%
FTE Summary				22-23 FTE	23-24 FTE		
[-] Instruction				42.15	43.55		
Assistant Principal				1.00	1.00		
Clerical				2.00	2.00		
Principal				1.00	1.00		
Teacher^				24.95	25.26		
Teaching Assistant				13.20	14.29		
[-] Admin/Attend&Health				1.00	1.00		
Nurse				1.00	1.00		
[-] Technology				0.80	0.70		
Other Technical				0.40	0.40		
Teacher^				0.40	0.30		
[-] Building Services				3.00	2.66		
Custodial				3.00	2.66		
Total				46.95	47.91		
Adjusted FTE^^				40.4	40.8		

^Positions included within the Teacher category are detailed in Section G – Staffing Allocations.

^^ Teaching Assistants (TAs) are allocated at a 2 TA to 1 Teacher ratio. This adjusted number is the FTE allocation to the school.

# RED HILL ELEMENTARY SCHOOL

*Home of the Moos*

## Red Hill Elementary

### General School Information

- Grades Served: PK-5
- Address: 3901 Red Hill School Road, North Garden, VA 22959
- Phone: 434-293-5332
- Principal: Nancy McCullen

Red Hill Elementary School is a rural school located on 11 acres in the Samuel Miller District. Together, the entire Red Hill community engages the mind and heart of each student to become a lifelong learner with the necessary skills to be a contributing member of our world. Through the development of curiosity, imagination, love of learning, respect for diversity, and intellect, all learners reach their highest potential.



**Nancy McCullen**  
Principal  
2018-Present



### School Quality Profile

For the 2021-22 school year, Red Hill received a status of accredited with conditions. For the full School Quality Profile, scan the QR code to the left or visit the [VDOE Red Hill Elementary School Quality Profile](#) web page.

### Student Enrollment

#### Historical Fall Membership<sup>^</sup>

	2020-2021	2021-2022	2022-2023
Total Enrollment	169	189	199
Students with Disabilities	18.9%	16.9%	17.1%
English Learners	4.7%	5.8%	5.5%
Economically Disadvantaged	48.5%	43.4%	44.7%

#### Projections for FY 24 Budget

Projected	
Total Enrollment	203
K-5 Enrollment	185
Pre-School Enrollment	18
Economically Disadvantaged	54.2%



### Facility Information

- Built in 1973
- 40,085 square feet
- 10.9-acre site

*Red Hill Elementary School is part of the **Southern Feeder Pattern**. Students continue to Walton Middle School and will graduate from Monticello High School.*

<sup>^</sup> Excludes students who are served in placements outside of ACPS. Does not include MACAA Head Start preschool enrollment.  
School Locations: D-32

# RED HILL ELEMENTARY SCHOOL

## Home of the Moos

Red Hill					23 Adopted vs. 24 Request		
Expense	19-20 Actuals	20-21 Actuals	21-22 Actuals	22-23 Adopted	23-24 Request	Increase	% Increase
Salary	\$1,569,243	\$1,350,215	\$1,447,994	\$1,741,879	\$1,926,732	\$184,853	10.6%
Other Wages	\$27,350	\$75,351	\$83,769	\$59,874	\$73,314	\$13,440	22.4%
Benefits	\$604,646	\$566,189	\$579,980	\$709,493	\$768,159	\$58,666	8.3%
Operations	\$25,837	\$32,620	\$35,769	\$43,439	\$60,224	\$16,785	38.6%
<b>Total</b>	<b>\$2,227,076</b>	<b>\$2,024,374</b>	<b>\$2,147,512</b>	<b>\$2,554,685</b>	<b>\$2,828,429</b>	<b>\$273,744</b>	<b>10.7%</b>

State Category Report	19-20 Actuals	20-21 Actuals	21-22 Actuals	22-23 Adopted	23-24 Request	Increase	% Increase
Instruction	\$2,022,557	\$1,830,923	\$1,962,945	\$2,318,133	\$2,606,889	\$288,756	12.5%
Admin/Attend&Health	\$64,867	\$56,019	\$60,852	\$68,613	\$52,456	(\$16,157)	-23.5%
Technology	\$39,570	\$43,949	\$39,596	\$47,712	\$39,587	(\$8,125)	-17.0%
Building Services	\$100,082	\$93,482	\$84,119	\$120,227	\$129,497	\$9,270	7.7%
<b>Total</b>	<b>\$2,227,076</b>	<b>\$2,024,374</b>	<b>\$2,147,512</b>	<b>\$2,554,685</b>	<b>\$2,828,429</b>	<b>\$273,744</b>	<b>10.7%</b>

FTE Summary		22-23 FTE	23-24 FTE
<input type="checkbox"/> <b>Instruction</b>		<b>26.31</b>	<b>28.86</b>
Assistant Principal		1.00	1.00
Clerical		2.00	2.00
Principal		1.00	1.00
Teacher^		18.25	19.13
Teaching Assistant		4.06	5.73
<input type="checkbox"/> <b>Admin/Attend&amp;Health</b>		<b>1.00</b>	<b>1.00</b>
Nurse		1.00	1.00
<input type="checkbox"/> <b>Technology</b>		<b>0.60</b>	<b>0.50</b>
Other Technical		0.60	0.20
Teacher^			0.30
<input type="checkbox"/> <b>Building Services</b>		<b>2.25</b>	<b>2.00</b>
Custodial		2.25	2.00
<b>Total</b>		<b>30.16</b>	<b>32.36</b>

Adjusted FTE^^	28.1	29.5
----------------	------	------

^Positions included within the Teacher category are detailed in Section G – Staffing Allocations.

^^ Teaching Assistants (TAs) are allocated at a 2 TA to 1 Teacher ratio. This adjusted number is the FTE allocation to the school.



# SCOTTSVILLE ELEMENTARY SCHOOL

*Home of the Tigers*

## Scottsville Elementary

### General School Information

- Grades Served: PK-5
- Address: 7868 Scottsville Road, Scottsville, VA 24590
- Phone: 434-286-2441
- Interim Principal: Art Stowe

Scottsville Elementary School is a place where students and staff work together to learn and grow, just like the trees and other wildlife surrounding our school. Following our motto, "Many Tigers, One Roar!" we work to ensure that everyone knows that they are an important part of the Tiger Team. We engage every student through their interests as we empower them to own their learning. We have developed relationships with the Town of Scottsville, B.F. Yancey Community Center, and several local churches to help in our shared mission of partnering with families to educate children.



**Art Stow**  
Interim Principal  
2022-Present



### School Quality Profile

For the 2021-22 school year, Scottsville Elementary received a full accreditation status. For the full School Quality Profile, scan the QR code on the left or visit the [VDOE Scottsville Elementary School Quality Profile](#) web page.

### Student Enrollment

#### Historical Fall Membership<sup>^</sup>

	2020-2021	2021-2022	2022-2023
Total Enrollment	221	216	225
Students with Disabilities	11.3%	13.9%	13.3%
English Learners	2.7%	3.2%	2.2%
Economically Disadvantaged	45.2%	45.8%	43.6%

#### Projections for FY 24 Budget

	Projected
Total Enrollment	225
K-5 Enrollment	207
Pre-School Enrollment	18
Economically Disadvantaged	47.0%



### Facility Information

- Built in 1974
- 50,097 square feet
- 15.0-acre site

*Scottsville Elementary School is part of the **Southern Feeder Pattern**. Students continue to Walton Middle School and will graduate from Monticello High School*

<sup>^</sup> Excludes students who are served in placements outside of ACPS. Does not include MACAA Head Start preschool enrollment.  
School Locations: D-34

# SCOTTSVILLE ELEMENTARY SCHOOL

## Home of the Tigers

Scottsville					23 Adopted vs. 24 Request		
Expense	19-20 Actuals	20-21 Actuals	21-22 Actuals	22-23 Adopted	23-24 Request	Increase	% Increase
Salary	\$1,694,147	\$1,514,752	\$1,772,029	\$1,971,332	\$2,099,498	\$128,166	6.5%
Other Wages	\$53,767	\$97,761	\$88,363	\$40,821	\$54,442	\$13,621	33.4%
Benefits	\$650,625	\$598,431	\$664,065	\$754,378	\$796,331	\$41,953	5.6%
Operations	\$51,431	\$69,686	\$74,033	\$47,504	\$53,567	\$6,063	12.8%
Total	\$2,449,970	\$2,280,630	\$2,598,491	\$2,814,035	\$3,003,838	\$189,803	6.7%
State Category Report	19-20 Actuals	20-21 Actuals	21-22 Actuals	22-23 Adopted	23-24 Request	Increase	% Increase
Instruction	\$2,242,097	\$2,054,925	\$2,351,097	\$2,557,804	\$2,734,946	\$177,142	6.9%
Admin/Attend&Health	\$54,082	\$54,903	\$64,927	\$64,239	\$69,701	\$5,462	8.5%
Technology	\$39,129	\$47,069	\$32,496	\$47,712	\$46,967	(\$745)	-1.6%
Building Services	\$114,662	\$123,732	\$149,971	\$144,280	\$152,224	\$7,944	5.5%
Total	\$2,449,970	\$2,280,630	\$2,598,491	\$2,814,035	\$3,003,838	\$189,803	6.7%
FTE Summary				22-23 FTE	23-24 FTE		
☐ Instruction				32.02	31.14		
Assistant Principal				1.00	2.00		
Clerical				2.00	2.00		
Principal				1.00			
Teacher^				20.23	19.40		
Teaching Assistant				7.79	7.74		
☐ Admin/Attend&Health				1.00	1.00		
Nurse				1.00	1.00		
☐ Technology				0.60	0.60		
Other Technical				0.60	0.20		
Teacher^					0.40		
☐ Building Services				2.75	2.75		
Custodial				2.75	2.75		
Total				36.37	35.49		
Adjusted FTE^^				32.5	31.6		

^Positions included within the Teacher category are detailed in Section G – Staffing Allocations.

^^ Teaching Assistants (TAs) are allocated at a 2 TA to 1 Teacher ratio. This adjusted number is the FTE allocation to the school.

# STONE-ROBINSON ELEMENTARY SCHOOL

*Home of the Eagles*

## Stone-Robinson Elementary

### General School Information

- Grades Served: PK-5
- Address: 958 North Milton Road Charlottesville, VA 22911
- Phone: 434-296-3754
- Principal: Angela Stokes

At Stone-Robinson Elementary, we believe all students come to us with a natural curiosity and love for learning. We maintain high expectations and provide authentic learning experiences that nurture each child's social, emotional, and academic growth. At the heart of it all, we believe in building strong relationships with our students and community members that promote a positive school climate — one that is safe, kind, and inclusive for all learners.



**Angela Stokes**  
Principal  
2021-Present



### School Quality Profile

For the 2021-22 school year, Stone-Robinson received a full accreditation status. For the full School Quality Profile, scan the QR code to the left or visit the [VDOE Stone-Robinson Elementary School Quality Profile](#) web page.

### Student Enrollment

#### Historical Fall Membership<sup>^</sup>

	2020-2021	2021-2022	2022-2023
Total Enrollment	450	469	472
Students with Disabilities	13.6%	16.0%	14.2%
English Learners	6.4%	6.2%	5.3%
Economically Disadvantaged	28.0%	24.7%	32.0%

#### Projections for FY 24 Budget

Projected	
Total Enrollment	500
K-5 Enrollment	462
Pre-School Enrollment	38
Economically Disadvantaged	27.6%



### Facility Information

- Built in 1961
- 71,100 square feet
- 11.3-acre site

*Stone-Robinson Elementary School is part of the **Southern Feeder Pattern**. Students continue to Burley or Walton Middle School and will graduate from Monticello High School.*

<sup>^</sup> Excludes students who are served in placements outside of ACPS. Does not include MACAA Head Start preschool enrollment.  
School Locations: D-36



# STONE-ROBINSON ELEMENTARY SCHOOL

## Home of the Eagles

### Stone-Robinson

### 23 Adopted vs. 24 Request

Expense	19-20 Actuals	20-21 Actuals	21-22 Actuals	22-23 Adopted	23-24 Request	Increase	% Increase
Salary	\$3,117,588	\$3,206,977	\$3,442,607	\$3,858,602	\$3,939,553	\$80,951	2.1%
Other Wages	\$85,782	\$168,151	\$185,333	\$70,777	\$108,825	\$38,048	53.8%
Benefits	\$1,178,206	\$1,351,265	\$1,408,291	\$1,536,591	\$1,632,556	\$95,965	6.2%
Operations	\$48,643	\$59,037	\$67,976	\$88,034	\$92,126	\$4,092	4.6%
<b>Total</b>	<b>\$4,430,218</b>	<b>\$4,785,431</b>	<b>\$5,104,206</b>	<b>\$5,554,004</b>	<b>\$5,773,060</b>	<b>\$219,056</b>	<b>3.9%</b>

State Category Report	19-20 Actuals	20-21 Actuals	21-22 Actuals	22-23 Adopted	23-24 Request	Increase	% Increase
Instruction	\$4,162,526	\$4,508,809	\$4,827,821	\$5,227,518	\$5,405,369	\$177,851	3.4%
Admin/Attend&Health	\$46,551	\$52,595	\$47,786	\$40,948	\$58,583	\$17,635	43.1%
Technology	\$64,721	\$53,714	\$53,242	\$81,852	\$87,452	\$5,600	6.8%
Building Services	\$156,421	\$170,313	\$175,357	\$203,686	\$221,656	\$17,970	8.8%
<b>Total</b>	<b>\$4,430,218</b>	<b>\$4,785,431</b>	<b>\$5,104,206</b>	<b>\$5,554,004</b>	<b>\$5,773,060</b>	<b>\$219,056</b>	<b>3.9%</b>

FTE Summary	22-23 FTE	23-24 FTE
<b>Instruction</b>	<b>67.66</b>	<b>66.92</b>
Assistant Principal	1.00	1.00
Clerical	2.00	2.50
Principal	1.00	1.00
Teacher^	41.83	39.44
Teaching Assistant	21.83	22.98
<b>Admin/Attend&amp;Health</b>	<b>1.00</b>	<b>1.00</b>
Nurse	1.00	1.00
<b>Technology</b>	<b>1.00</b>	<b>1.00</b>
Other Technical	0.50	0.40
Teacher^	0.50	0.60
<b>Building Services</b>	<b>3.75</b>	<b>3.75</b>
Custodial	3.75	3.75
<b>Total</b>	<b>73.41</b>	<b>72.67</b>

Adjusted FTE^^	62.5	61.2
----------------	------	------

^Positions included within the Teacher category are detailed in Section G – Staffing Allocations.

^^ Teaching Assistants (TAs) are allocated at a 2 TA to 1 Teacher ratio. This adjusted number is the FTE allocation to the school.

# STONY POINT ELEMENTARY SCHOOL

*Home of the Dragons*

## Stony Point Elementary

### General School Information

- Grades Served: PK-5
- Address: 3893 Stony Point Road, Keswick, VA 22947
- Phone: 434-973-6405
- Principal: Maureen Jensen

Stony Point Elementary is a creative community of high-achieving learners who encourage each other to find and explore things about which they are passionate. It is our mission to foster an environment that allows our members to persevere, to overcome challenges, to be unafraid to fail or innovate, and to believe that there is no limit to what we can accomplish.



**Maureen Jensen**  
Principal  
2021-Present



### School Quality Profile

For the 2021-22 school year, Stony Point received a full accreditation status. For the full School Quality Profile, scan the QR code to the left or visit the [VDOE Stony Point Elementary School Quality Profile](#) web page.

### Student Enrollment

#### Historical Fall Membership<sup>^</sup>

	2020-2021	2021-2022	2022-2023
Total Enrollment	173	187	188
Students with Disabilities	8.1%	7.5%	9.6%
English Learners	4.0%	3.2%	2.1%
Economically Disadvantaged	31.8%	29.4%	27.7%

#### Projections for FY 24 Budget

Projected	
Total Enrollment	198
K-5 Enrollment	186
Pre-School Enrollment	12
Economically Disadvantaged	28.9%



### Facility Information

- Built in 1934
- 38,500 square feet
- 11.6-acre site

*Stony Point Elementary School is part of both the **Northern and Southern feeder patterns**. Students continue to either Burley Middle School and then Monticello High School, or Lakeside Middle School followed by Albemarle High School.*

<sup>^</sup> Excludes students who are served in placements outside of ACPS. Does not include MACAA Head Start preschool enrollment.  
School Locations: D-38

# STONY POINT ELEMENTARY SCHOOL

## Home of the Dragons

Stony Point					23 Adopted vs. 24 Request		
Expense	19-20 Actuals	20-21 Actuals	21-22 Actuals	22-23 Adopted	23-24 Request	Increase	% Increase
Salary	\$1,774,864	\$1,588,973	\$1,671,622	\$1,938,016	\$2,024,794	\$86,778	4.5%
Other Wages	\$49,412	\$64,261	\$89,633	\$38,166	\$51,496	\$13,330	34.9%
Benefits	\$694,248	\$667,606	\$682,400	\$792,372	\$841,384	\$49,012	6.2%
Operations	\$36,398	\$51,772	\$66,753	\$54,831	\$54,823	(\$8)	-0.0%
Total	\$2,554,922	\$2,372,613	\$2,510,408	\$2,823,385	\$2,972,497	\$149,112	5.3%
State Category Report	19-20 Actuals	20-21 Actuals	21-22 Actuals	22-23 Adopted	23-24 Request	Increase	% Increase
Instruction	\$2,289,401	\$2,107,411	\$2,237,984	\$2,527,640	\$2,656,812	\$129,172	5.1%
Admin/Attend&Health	\$54,768	\$57,779	\$61,166	\$67,993	\$64,037	(\$3,956)	-5.8%
Technology	\$53,498	\$49,708	\$41,901	\$55,398	\$58,705	\$3,307	6.0%
Building Services	\$157,256	\$157,714	\$169,357	\$172,354	\$192,943	\$20,589	11.9%
Total	\$2,554,922	\$2,372,613	\$2,510,408	\$2,823,385	\$2,972,497	\$149,112	5.3%
FTE Summary				22-23 FTE	23-24 FTE		
☐ Instruction				29.13	31.40		
Assistant Principal				1.00	1.00		
Clerical				2.00	2.00		
Principal				1.00	1.00		
Teacher^				19.85	18.23		
Teaching Assistant				5.28	9.17		
☐ Admin/Attend&Health				1.00	1.00		
Nurse				1.00	1.00		
☐ Technology				0.65	0.70		
Other Technical				0.25	0.30		
Teacher^				0.40	0.40		
☐ Building Services				3.00	3.00		
Custodial				3.00	3.00		
Total				33.78	36.10		
Adjusted FTE^^				31.1	31.5		

^Positions included within the Teacher category are detailed in Section G – Staffing Allocations.

^^ Teaching Assistants (TAs) are allocated at a 2 TA to 1 Teacher ratio. This adjusted number is the FTE allocation to the school.

# WOODBROOK ELEMENTARY SCHOOL

*Home of the Bears*

## Woodbrook Elementary

### General School Information

- Grades Served: PK-5
- Address: 100 Woodbrook Drive, Charlottesville, VA 22901
- Phone: 434-973-6600
- Principal: Kristen Williams

Woodbrook is a neighborhood school that thrives on community partnerships to support each child with academic and social and emotional growth. We serve approximately 600 students who all live within a four-mile radius of the school. Our families speak 18 different languages and bring a unique cultural perspective to the home/school partnership. We are proud of the diversity in our school and celebrate all that we can learn from and with each other. We are committed to providing the best educational experience possible for our students.



**Kristen Williams**  
Principal  
2019-Present



### School Quality Profile

For the 2021-22 school year, Woodbrook received a status of accreditation with conditions. For the full School Quality Profile, scan the QR code to the left or visit the [VDOE Woodbrook Elementary School Quality Profile](#) web page.

### Student Enrollment

#### Historical Fall Membership<sup>^</sup>

	2020-2021	2021-2022	2022-2023
Total Enrollment	568	558	605
Students with Disabilities	11.1%	11.5%	10.6%
English Learners	24.5%	23.5%	24.1%
Economically Disadvantaged	57.2%	53.9%	57.7%

#### Projections for FY 24 Budget

Projected	
Total Enrollment	619
K-5 Enrollment	575
Pre-School Enrollment	44
Economically Disadvantaged	67.7%



### Facility Information

- Built in 1966
- 82,966 square feet
- 12.0-acre site

*Woodbrook Elementary School is part of the **Northern Feeder Pattern**. Students continue to Journey Middle School and will graduate from Albemarle High School.*

<sup>^</sup> Excludes students who are served in placements outside of ACPS. Does not include MACAA Head Start preschool enrollment.

# WOODBROOK ELEMENTARY SCHOOL

## Home of the Bears

Woodbrook					23 Adopted vs. 24 Request		
Expense	19-20 Actuals	20-21 Actuals	21-22 Actuals	22-23 Adopted	23-24 Request	Increase	% Increase
Salary	\$3,576,650	\$3,542,614	\$4,141,601	\$4,878,387	\$5,535,937	\$657,550	13.5%
Other Wages	\$119,760	\$162,354	\$275,126	\$76,984	\$147,395	\$70,411	91.5%
Benefits	\$1,317,059	\$1,466,070	\$1,636,103	\$1,913,033	\$2,202,794	\$289,761	15.1%
Operations	\$73,706	\$84,517	\$90,664	\$127,203	\$113,973	(\$13,230)	-10.4%
Total	\$5,087,174	\$5,255,555	\$6,143,495	\$6,995,607	\$8,000,099	\$1,004,492	14.4%
State Category Report	19-20 Actuals	20-21 Actuals	21-22 Actuals	22-23 Adopted	23-24 Request	Increase	% Increase
Instruction	\$4,810,923	\$4,960,902	\$5,791,801	\$6,587,040	\$7,581,701	\$994,661	15.1%
Admin/Attend&Health	\$46,349	\$48,149	\$61,523	\$54,436	\$58,725	\$4,289	7.9%
Technology	\$71,515	\$52,142	\$46,561	\$75,199	\$79,528	\$4,329	5.8%
Building Services	\$158,387	\$194,362	\$243,611	\$278,932	\$280,145	\$1,213	0.4%
Total	\$5,087,174	\$5,255,555	\$6,143,495	\$6,995,607	\$8,000,099	\$1,004,492	14.4%
FTE Summary				22-23 FTE	23-24 FTE		
☐ Instruction				83.12	89.21		
Assistant Principal				1.00	1.00		
Clerical				2.50	3.00		
Principal				1.00	1.00		
Teacher^				58.07	60.49		
Teaching Assistant				20.55	23.72		
☐ Admin/Attend&Health				1.00	1.00		
Nurse				1.00	1.00		
☐ Technology				0.85	0.90		
Other Technical				0.35	0.40		
Teacher^				0.50	0.50		
☐ Building Services				4.63	4.63		
Custodial				4.63	4.63		
Total				89.60	95.74		
Adjusted FTE^^				79.3	83.9		

^Positions included within the Teacher category are detailed in Section G – Staffing Allocations.

^^ Teaching Assistants (TAs) are allocated at a 2 TA to 1 Teacher ratio. This adjusted number is the FTE allocation to the school.



# BURLEY MIDDLE SCHOOL

*Home of the Bears*

## Burley Middle School

### General School Information

- Grades Served: 6-8
- Address: 901 Rose Hill Drive, Charlottesville, VA 22903
- Phone: 434-295-5101
- Principal: Kasaundra Blount

Jackson P. Burley Middle School, continuing to build on its historic legacy of integrity and achievement, seeks to cultivate educational partnerships that engage students, staff, families and the community in the pursuit of positive, academic outcomes for all students. Burley Middle School's core values – Character, Scholarship, Service – remain the driving force behind all that we do and keeps us connected to the historic legacy of Burley High School.



**Kasaundra Blount**  
Principal  
2020-Present



### School Quality Profile

For the 2021-22 school year, Burley received a full accreditation status. For the full school quality profile, scan the QR code to the left or visit the [VDOE Burley Middle School Quality Profile](#) web page.

### Student Enrollment

#### Historical Fall Membership

	2020-2021	2021-2022	2022-2023
Total Enrollment	607	598	588
Students with Disabilities	16.1%	14.2%	13.8%
English Learners	17.1%	18.7%	19.0%
Economically Disadvantaged	44.6%	38.8%	45.4%

#### Projections for FY 24 Budget

Projected	
Total Enrollment	553
Economically Disadvantaged	43.7%



### Facility Information

- Built in 1951
- 123,626 square feet
- 15.3-acre site

*Burley Middle School is part of both the **Northern and Southern feeder patterns**. Students previously attended Agnor-Hurt, Mountain View, Stone-Robinson, or Stony Point Elementary School, and will graduate from either Albemarle or Monticello High School.*

# BURLEY MIDDLE SCHOOL

*Home of the Bears*

Burley					23 Adopted vs. 24 Request		
Expense	19-20 Actuals	20-21 Actuals	21-22 Actuals	22-23 Adopted	23-24 Request	Increase	% Increase
Salary	\$3,691,766	\$4,176,321	\$4,519,060	\$4,787,242	\$4,679,109	(\$108,133)	-2.3%
Other Wages	\$50,492	\$114,318	\$182,432	\$106,805	\$130,396	\$23,591	22.1%
Benefits	\$1,457,256	\$1,751,604	\$1,776,240	\$1,918,280	\$1,870,830	(\$47,450)	-2.5%
Operations	\$83,790	\$130,203	\$117,845	\$156,184	\$163,958	\$7,774	5.0%
Total	\$5,283,305	\$6,172,446	\$6,595,577	\$6,968,511	\$6,844,293	(\$124,218)	-1.8%
State Category Report	19-20 Actuals	20-21 Actuals	21-22 Actuals	22-23 Adopted	23-24 Request	Increase	% Increase
Instruction	\$4,905,201	\$5,801,314	\$6,146,928	\$6,533,262	\$6,310,921	(\$222,341)	-3.4%
Admin/Attend&Health	\$57,970	\$59,045	\$76,469	\$67,729	\$114,140	\$46,411	68.5%
Technology	\$107,171	\$105,301	\$72,603	\$98,048	\$131,239	\$33,191	33.9%
Building Services	\$212,962	\$206,787	\$299,577	\$269,472	\$287,993	\$18,521	6.9%
Total	\$5,283,305	\$6,172,446	\$6,595,577	\$6,968,511	\$6,844,293	(\$124,218)	-1.8%
FTE Summary				22-23 FTE	23-24 FTE		
☐ Instruction				73.84	68.45		
Assistant Principal				1.00	1.00		
Clerical				3.00	3.00		
Principal				1.00	1.00		
Teacher^				56.34	52.45		
Teaching Assistant				12.50	11.00		
☐ Admin/Attend&Health				1.00	2.00		
Nurse				1.00	1.00		
Teaching Assistant					1.00		
☐ Technology				1.20	1.40		
Other Technical				0.80	0.90		
Teacher^				0.40	0.50		
☐ Building Services				5.00	5.00		
Custodial				5.00	5.00		
Total				81.04	76.85		
Adjusted FTE^^				74.8	70.9		

^Positions included within the Teacher category are detailed in Section G – Staffing Allocations.

^^ Teaching Assistants (TAs) are allocated at a 2 TA to 1 Teacher ratio. This adjusted number is the FTE allocation to the school.

# HENLEY MIDDLE SCHOOL

*Home of the Hornets*

## Henley Middle School

### General School Information

- Grades Served: 6-8
- Address: 5880 Rockfish Gap Turnpike, Crozet, VA 22932
- Phone: 434-823-4393
- Principal: LaRuth Ensley

Henley's North Star, Equity for Deeper Learning through Culturally Responsive and Anti-racist Teaching, guides our social, emotional, and academic work with our students and staff. We are deeply committed to ACPS's strategic plan, and we continue to evaluate our curriculum, assessment, and instruction through these lenses and seek to equip all students with the broad range of skills and competencies that will prepare them for high school, college and a successful and rewarding life.



**LaRuth Ensley**  
Principal  
2022-Present



### School Quality Profile

For the 2021-22 school year, Henley received a full accreditation status. For the full School Quality Profile, scan the QR code to the left or visit the [VDOE Henley Middle School Quality Profile](#) web page.

### Student Enrollment

#### Historical Fall Membership

	2020-2021	2021-2022	2022-2023
Total Enrollment	877	839	808
Students with Disabilities	9.8%	10.3%	12.6%
English Learners	1.8%	2.1%	2.1%
Economically Disadvantaged	17.1%	13.9%	13.4%

#### Projections for FY 24 Budget

Projected	
Total Enrollment	809
Economically Disadvantaged	14.4%



### Facility Information

- Built in 1966
- 120,419 square feet
- 30.0-acre site

*Henley Middle School is part of the **Western Feeder Pattern**. Students previously attended Brownsville, Crozet, Meriwether Lewis, or Murray Elementary School, and will graduate from Western Albemarle High School.*

# HENLEY MIDDLE SCHOOL

## Home of the Hornets

Expense	Henley					23 Adopted vs. 24 Request	
	19-20 Actuals	20-21 Actuals	21-22 Actuals	22-23 Adopted	23-24 Request	Increase	% Increase
Salary	\$4,809,208	\$4,794,950	\$5,357,002	\$5,368,527	\$5,542,262	\$173,735	3.2%
Other Wages	\$142,091	\$253,921	\$341,138	\$134,685	\$174,481	\$39,796	29.5%
Benefits	\$1,838,328	\$1,942,697	\$2,068,463	\$2,072,161	\$2,221,644	\$149,483	7.2%
Operations	\$144,718	\$163,435	\$126,934	\$181,197	\$188,352	\$7,155	3.9%
<b>Total</b>	<b>\$6,934,345</b>	<b>\$7,155,003</b>	<b>\$7,893,537</b>	<b>\$7,756,570</b>	<b>\$8,126,739</b>	<b>\$370,169</b>	<b>4.8%</b>

State Category Report	19-20 Actuals	20-21 Actuals	21-22 Actuals	22-23 Adopted	23-24 Request	Increase	% Increase
Instruction	\$6,524,640	\$6,773,869	\$7,375,003	\$7,170,844	\$7,462,309	\$291,465	4.1%
Admin/Attend&Health	\$50,985	\$49,454	\$64,796	\$57,033	\$142,434	\$85,401	149.7%
Technology	\$165,383	\$116,943	\$124,119	\$200,107	\$156,399	(\$43,708)	-21.8%
Building Services	\$193,336	\$214,737	\$329,619	\$328,586	\$365,597	\$37,011	11.3%
<b>Total</b>	<b>\$6,934,345</b>	<b>\$7,155,003</b>	<b>\$7,893,537</b>	<b>\$7,756,570</b>	<b>\$8,126,739</b>	<b>\$370,169</b>	<b>4.8%</b>

FTE Summary	22-23 FTE	23-24 FTE
<b>Instruction</b>	<b>82.51</b>	<b>82.87</b>
Assistant Principal	2.00	1.00
Clerical	4.50	3.50
Principal	1.00	1.00
Teacher^	62.01	62.37
Teaching Assistant	13.00	15.00
<b>Admin/Attend&amp;Health</b>	<b>1.00</b>	<b>3.00</b>
Nurse	1.00	1.00
Teaching Assistant		2.00
<b>Technology</b>	<b>2.00</b>	<b>1.50</b>
Other Technical	1.00	0.50
Teacher^	1.00	1.00
<b>Building Services</b>	<b>6.00</b>	<b>6.50</b>
Custodial	6.00	6.50
<b>Total</b>	<b>91.51</b>	<b>93.87</b>

Adjusted FTE^^	85.0	85.4
----------------	------	------

^Positions included within the Teacher category are detailed in Section G – Staffing Allocations.

^^ Teaching Assistants (TAs) are allocated at a 2 TA to 1 Teacher ratio. This adjusted number is the FTE allocation to the school.



# JOURNEY MIDDLE SCHOOL

*Home of the Jaguars*

## Journey Middle School

### General School Information

- Grades Served: 6-8
- Address: 210 Lambs Lane, Charlottesville, VA 22901
- Phone: 434-975-9320
- Principal: Ashby Johnson

Journey Middle School serves students in the urban ring and Earlysville area of Albemarle County. Our diverse students and families speak 27 different languages and make Journey a special place to be. We maintain a strong focus on college and career readiness, as evidenced by our Advancement Via Individual Determination (AVID) program. We are an AVID National Demonstration School, which indicates that we are among the top 3% of schools in the world that implement AVID to fidelity. Our core values at Journey are growth, compassion, healthy risk-taking, connection, and equity.



**Ashby Johnson**  
Principal  
2019-Present



### School Quality Profile

For the 2021-22 school year, Journey received a full accreditation status. For the full School Quality Profile, scan the QR code to the left or visit the [VDOE Journey Middle School Quality Profile](#) web page.

### Student Enrollment

#### Historical Fall Membership

	2020-2021	2021-2022	2022-2023
Total Enrollment	681	694	634
Students with Disabilities	12.8%	15.9%	14.4%
English Learners	25.4%	22.3%	26.2%
Economically Disadvantaged	58.0%	44.7%	51.7%

#### Projections for FY 24 Budget

Projected	
Total Enrollment	638
Economically Disadvantaged	52.2%



### Facility Information

- Built in 1966
- 94,929 square feet
- 20.0-acre site

*Journey Middle School is part of the **Northern Feeder Pattern**. Students previously attended Agnor-Hurt, Greer, Broadus Wood, or Woodbrook Elementary School, and will graduate from Albemarle High School.*



# JOURNEY MIDDLE SCHOOL

## Home of the Jaguars

Journey					23 Adopted vs. 24 Request		
Expense	19-20 Actuals	20-21 Actuals	21-22 Actuals	22-23 Adopted	23-24 Request	Increase	% Increase
Salary	\$4,095,369	\$4,410,161	\$5,010,736	\$5,317,755	\$5,428,968	\$111,213	2.1%
Other Wages	\$78,307	\$172,824	\$249,810	\$113,982	\$157,855	\$43,873	38.5%
Benefits	\$1,512,746	\$1,717,016	\$1,885,847	\$2,088,829	\$2,175,162	\$86,333	4.1%
Operations	\$90,350	\$79,651	\$165,787	\$172,623	\$171,948	(\$675)	-0.4%
Total	\$5,776,771	\$6,379,652	\$7,312,181	\$7,693,189	\$7,933,933	\$240,744	3.1%
State Category Report	19-20 Actuals	20-21 Actuals	21-22 Actuals	22-23 Adopted	23-24 Request	Increase	% Increase
Instruction	\$5,449,215	\$6,040,366	\$6,794,098	\$7,238,486	\$7,436,536	\$198,050	2.7%
Admin/Attend&Health	\$48,576	\$48,596	\$70,726	\$57,902	\$102,858	\$44,956	77.6%
Technology	\$88,377	\$108,178	\$164,772	\$112,143	\$94,280	(\$17,863)	-15.9%
Building Services	\$190,603	\$182,513	\$282,585	\$284,658	\$300,259	\$15,601	5.5%
Total	\$5,776,771	\$6,379,652	\$7,312,181	\$7,693,189	\$7,933,933	\$240,744	3.1%
FTE Summary				22-23 FTE	23-24 FTE		
☐ Instruction				86.14	80.05		
Assistant Principal				1.00	1.00		
Clerical				4.00	3.50		
Principal				1.00	1.00		
Teacher^				66.14	64.05		
Teaching Assistant				14.00	10.50		
☐ Admin/Attend&Health				1.00	2.00		
Nurse				1.00	1.00		
Teaching Assistant					1.00		
☐ Technology				1.20	1.10		
Other Technical				0.80	0.50		
Teacher^				0.40	0.60		
☐ Building Services				5.00	5.00		
Custodial				5.00	5.00		
Total				93.34	88.15		
Adjusted FTE^^				86.3	82.4		

^Positions included within the Teacher category are detailed in Section G – Staffing Allocations.

^^ Teaching Assistants (TAs) are allocated at a 2 TA to 1 Teacher ratio. This adjusted number is the FTE allocation to the school.

# LAKESIDE MIDDLE SCHOOL

*Home of the Sharks*

## Lakeside Middle School

### General School Information

- Grades Served: 6-8
- Address: 2801 Powell Creek Drive, Charlottesville, VA 22911
- Phone: 434-975-0599
- Principal: Michael Craddock

Lakeside Middle School serves nearly 600 students in grades 6 through 8 and includes more than 70 faculty and staff. We are committed to providing our students with high-quality learning experiences that are relevant and meaningful. We firmly believe that supporting students' social and emotional well-being is an integral part of the middle school experience.



### School Quality Profile

For the 2021-22 school year, Lakeside received a full accreditation status. For the full School Quality Profile, scan the QR code to the left or visit the [VDOE Lakeside Middle School Quality Profile](#) web page.



**Michael Craddock**  
Principal  
2022-Present

### Student Enrollment

#### Historical Fall Membership

	2020-2021	2021-2022	2022-2023
Total Enrollment	579	545	513
Students with Disabilities	10.7%	9.4%	12.3%
English Learners	6.9%	8.6%	10.5%
Economically Disadvantaged	21.2%	19.3%	23.8%

#### Projections for FY 24 Budget

Projected	
Total Enrollment	527
Economically Disadvantaged	22.1%



### Facility Information

- Built in 1994
- 94,440 square feet
- 21.0-acre site

*Lakeside Middle School is part of the **Northern Feeder Pattern**. Students previously attended Baker-Butler, Hollymead, or Stony-Point Elementary School, and will graduate from Albemarle High School.*

# LAKESIDE MIDDLE SCHOOL

## Home of the Sharks

Lakeside						23 Adopted vs. 24 Request	
Expense	19-20 Actuals	20-21 Actuals	21-22 Actuals	22-23 Adopted	23-24 Request	Increase	% Increase
Salary	\$3,548,913	\$3,426,209	\$3,779,970	\$3,926,056	\$4,117,949	\$191,893	4.9%
Other Wages	\$101,658	\$119,205	\$203,966	\$107,476	\$119,087	\$11,611	10.8%
Benefits	\$1,377,584	\$1,394,189	\$1,476,449	\$1,587,911	\$1,645,509	\$57,598	3.6%
Operations	\$90,948	\$117,023	\$128,143	\$125,356	\$137,488	\$12,132	9.7%
<b>Total</b>	<b>\$5,119,104</b>	<b>\$5,056,625</b>	<b>\$5,588,529</b>	<b>\$5,746,799</b>	<b>\$6,020,033</b>	<b>\$273,234</b>	<b>4.8%</b>
State Category Report	19-20 Actuals	20-21 Actuals	21-22 Actuals	22-23 Adopted	23-24 Request	Increase	% Increase
Instruction	\$4,824,589	\$4,741,941	\$5,260,564	\$5,336,571	\$5,561,647	\$225,076	4.2%
Admin/Attend&Health	\$39,186	\$40,698	\$60,453	\$55,441	\$100,768	\$45,327	81.8%
Technology	\$13,888	\$77,908	\$71,281	\$103,328	\$103,410	\$82	0.1%
Building Services	\$241,442	\$196,079	\$196,231	\$251,459	\$254,208	\$2,749	1.1%
<b>Total</b>	<b>\$5,119,104</b>	<b>\$5,056,625</b>	<b>\$5,588,529</b>	<b>\$5,746,799</b>	<b>\$6,020,033</b>	<b>\$273,234</b>	<b>4.8%</b>
FTE Summary	22-23 FTE		23-24 FTE				
<input checked="" type="checkbox"/> <b>Instruction</b>	<b>58.34</b>		<b>61.19</b>				
Assistant Principal	1.00		1.00				
Clerical	3.00		3.00				
Principal	1.00		1.00				
Teacher^	45.34		45.19				
Teaching Assistant	8.00		11.00				
<input checked="" type="checkbox"/> <b>Admin/Attend&amp;Health</b>	<b>1.00</b>		<b>2.00</b>				
Nurse	1.00		1.00				
Teaching Assistant			1.00				
<input checked="" type="checkbox"/> <b>Technology</b>	<b>1.30</b>		<b>1.10</b>				
Other Technical	0.60		0.60				
Teacher^	0.70		0.50				
<input checked="" type="checkbox"/> <b>Building Services</b>	<b>4.50</b>		<b>4.50</b>				
Custodial	4.50		4.50				
<b>Total</b>	<b>65.14</b>		<b>68.79</b>				
Adjusted FTE^^	61.1		62.8				

^Positions included within the Teacher category are detailed in Section G – Staffing Allocations.

^^ Teaching Assistants (TAs) are allocated at a 2 TA to 1 Teacher ratio. This adjusted number is the FTE allocation to the school.

# WALTON MIDDLE SCHOOL

*Home of the Wildcats*

## Walton Middle School

### General School Information

- Grades Served: 6-8
- Address: 4217 Red Hill Road, Charlottesville, VA 22903
- Phone: 434-977-5615
- Principal: Josh Walton

Walton Middle School serves students and families in the Southern Feeder Pattern of Albemarle County by establishing a community of learners and learning built on relationships, relevance, and rigor. At Walton, our work is centered around three Guiding Principles, which include fostering a community of safe, responsible and respectful learners that help each other grow academically, emotionally and socially; being welcoming, inclusive and student-centered to ensure that the doors of opportunity are open for all students; and working as a team to foster health risk-taking, pursuit of passions and a mindset of continuous improvement.



**Josh Walton**  
Principal  
2016-Present



### School Quality Profile

For the 2021-22 school year, Walton received a full accreditation status. For the full School Quality Profile, scan the QR code to the left or visit the [VDOE Walton Middle School Quality Profile](#) web page.

### Student Enrollment

#### Historical Fall Membership

	2020-2021	2021-2022	2022-2023
Total Enrollment	345	329	340
Students with Disabilities	20.9%	17.9%	18.5%
English Learners	3.8%	4.3%	5.9%
Economically Disadvantaged	41.2%	31.9%	37.9%

#### Projections for FY 24 Budget

Projected	
Total Enrollment	328
Economically Disadvantaged	38.7%



### Facility Information

- Built in 1974
- 98,340 square feet
- 50.0-acre site

*Walton Middle School is part of the **Southern Feeder Pattern**. Students previously attended Mountain View, Red Hill, Scottsville, or Stone-Robinson Elementary School, and will graduate from Monticello High School.*

# WALTON MIDDLE SCHOOL

## Home of the Wildcats

Walton						23 Adopted vs. 24 Request	
Expense	19-20 Actuals	20-21 Actuals	21-22 Actuals	22-23 Adopted	23-24 Request	Increase	% Increase
Salary	\$2,861,351	\$2,960,427	\$3,308,471	\$3,615,300	\$3,726,197	\$110,897	3.1%
Other Wages	\$52,836	\$93,094	\$105,298	\$90,800	\$121,865	\$31,065	34.2%
Benefits	\$1,160,586	\$1,224,836	\$1,298,126	\$1,485,861	\$1,477,713	(\$8,148)	-0.5%
Operations	\$79,863	\$89,202	\$118,589	\$98,857	\$100,824	\$1,967	2.0%
<b>Total</b>	<b>\$4,154,636</b>	<b>\$4,367,559</b>	<b>\$4,830,484</b>	<b>\$5,290,818</b>	<b>\$5,426,599</b>	<b>\$135,781</b>	<b>2.6%</b>
State Category Report	19-20 Actuals	20-21 Actuals	21-22 Actuals	22-23 Adopted	23-24 Request	Increase	% Increase
Instruction	\$3,834,840	\$4,060,639	\$4,522,872	\$4,971,660	\$5,001,653	\$29,993	0.6%
Admin/Attend&Health	\$46,087	\$49,707	\$56,918	\$54,203	\$100,407	\$46,204	85.2%
Technology	\$75,313	\$80,086	\$39,118	\$34,921	\$81,866	\$46,945	134.4%
Building Services	\$198,396	\$177,127	\$211,576	\$230,034	\$242,673	\$12,639	5.5%
<b>Total</b>	<b>\$4,154,636</b>	<b>\$4,367,559</b>	<b>\$4,830,484</b>	<b>\$5,290,818</b>	<b>\$5,426,599</b>	<b>\$135,781</b>	<b>2.6%</b>
FTE Summary	22-23 FTE		23-24 FTE				
<input checked="" type="checkbox"/> <b>Instruction</b>	<b>57.03</b>		<b>54.57</b>				
Assistant Principal	1.00		1.00				
Clerical	3.00		3.00				
Principal	1.00		1.00				
Teacher^	41.31		39.57				
Teaching Assistant	10.72		10.00				
<input checked="" type="checkbox"/> <b>Admin/Attend&amp;Health</b>	<b>1.00</b>		<b>2.00</b>				
Nurse	1.00		1.00				
Teaching Assistant			1.00				
<input checked="" type="checkbox"/> <b>Technology</b>	<b>0.40</b>		<b>1.00</b>				
Other Technical	0.20		0.60				
Teacher^	0.20		0.40				
<input checked="" type="checkbox"/> <b>Building Services</b>	<b>4.00</b>		<b>4.00</b>				
Custodial	4.00		4.00				
<b>Total</b>	<b>62.43</b>		<b>61.57</b>				
Adjusted FTE^^	57.1		56.1				

^Positions included within the Teacher category are detailed in Section G – Staffing Allocations.

^^ Teaching Assistants (TAs) are allocated at a 2 TA to 1 Teacher ratio. This adjusted number is the FTE allocation to the school.



# ALBEMARLE HIGH SCHOOL

*Home of the Patriots*

## Albemarle High School

### General School Information

- Grades Served: 9-12
- Address: 2775 Hydraulic Road, Charlottesville, VA 22901
- Phone: 434-975-9300
- Principal: Darah Bonham

The oldest and largest high school in the division, Albemarle High School serves a diverse cadre of students by providing a quality education with enriching experiences for our students. We strive every day to build trust, ignite enthusiasm, and to partner with our students, family, and community to ensure the best experience for our students and further the goals for our division. By continuing our own lifelong learning, the staff of Albemarle seeks to be open and responsive to all walks of life that make their way through the halls to facilitate a welcoming and inclusive learning environment.



**Darah Bonham**  
Principal  
2019-Present



### School Quality Profile

For the 2021-22 school year, Albemarle High received a full accreditation status. For the full School Quality Profile, scan the QR code to the left or visit the [VDOE Albemarle High School Quality Profile](#) web page.

### Student Enrollment

#### Historical Fall Membership

	2020-2021	2021-2022	2022-2023
Total Enrollment	1887	1911	1993
Students with Disabilities	12.5%	11.7%	10.5%
English Learners	10.4%	11.2%	13.3%
Economically Disadvantaged	34.3%	27.4%	33.2%

#### Projections for FY 24 Budget

Projected	
Total Enrollment	1958
Economically Disadvantaged	33.1%



### Facility Information

- Built in 1953
- 350,103 square feet
- 40.0-acre site

*Albemarle High School is the culminating experience of all Northern Feeder Pattern middle and elementary schools.*

### Career Learning Communities

- Business, Innovation & Entrepreneurship
- Education & Human Development
- Math, Engineering & Sciences

# ALBEMARLE HIGH SCHOOL

## Home of the Patriots

Albemarle						23 Adopted vs. 24 Request	
Expense	19-20 Actuals	20-21 Actuals	21-22 Actuals	22-23 Adopted	23-24 Request	Increase	% Increase
Salary	\$11,789,491	\$10,976,300	\$11,784,944	\$13,733,430	\$14,743,532	\$1,010,102	7.4%
Other Wages	\$625,789	\$667,091	\$1,035,194	\$696,449	\$829,172	\$132,723	19.1%
Benefits	\$4,571,345	\$4,421,471	\$4,575,055	\$5,312,506	\$5,836,473	\$523,967	9.9%
Operations	\$547,444	\$475,172	\$633,538	\$705,506	\$734,076	\$28,570	4.0%
<b>Total</b>	<b>\$17,534,069</b>	<b>\$16,540,034</b>	<b>\$18,028,732</b>	<b>\$20,447,891</b>	<b>\$22,143,253</b>	<b>\$1,695,362</b>	<b>8.3%</b>
State Category Report	19-20 Actuals	20-21 Actuals	21-22 Actuals	22-23 Adopted	23-24 Request	Increase	% Increase
Instruction	\$16,537,992	\$15,617,850	\$16,943,483	\$19,132,647	\$20,632,377	\$1,499,730	7.8%
Admin/Attend&Health	\$62,482	\$68,003	\$86,862	\$137,459	\$373,186	\$235,727	171.5%
Technology	\$263,297	\$210,131	\$235,521	\$322,174	\$304,459	(\$17,715)	-5.5%
Building Services	\$670,298	\$644,050	\$762,866	\$855,611	\$833,231	(\$22,380)	-2.6%
<b>Total</b>	<b>\$17,534,069</b>	<b>\$16,540,034</b>	<b>\$18,028,732</b>	<b>\$20,447,891</b>	<b>\$22,143,253</b>	<b>\$1,695,362</b>	<b>8.3%</b>
FTE Summary	22-23 FTE		23-24 FTE				
<b>Instruction</b>	<b>206.00</b>		<b>207.45</b>				
Assistant Principal	4.00		5.00				
Clerical	12.00		11.00				
Other Management	2.00		2.00				
Other Professional	1.00		1.00				
Principal	1.00		1.00				
Social Worker	1.00						
Teacher^	157.79		167.45				
Teaching Assistant	27.21		20.00				
<b>Admin/Attend&amp;Health</b>	<b>2.00</b>		<b>6.00</b>				
Nurse	1.91		2.00				
Other Management	0.09						
Other Professional			1.00				
Teaching Assistant			3.00				
<b>Technology</b>	<b>3.90</b>		<b>3.00</b>				
Other Technical	2.90		2.00				
Teacher^	1.00		1.00				
<b>Building Services</b>	<b>15.00</b>		<b>14.50</b>				
Custodial	15.00		14.50				
<b>Total</b>	<b>226.90</b>		<b>230.95</b>				
Adjusted FTE^^	213.3		219.5				

^Positions included within the Teacher category are detailed in Section G – Staffing Allocations.

^^ Teaching Assistants (TAs) are allocated at a 2 TA to 1 Teacher ratio. This adjusted number is the FTE allocation to the school.

# MONTICELLO HIGH SCHOOL

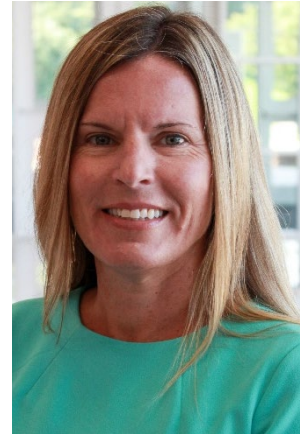
*Home of the Mustangs*

## Monticello High School

### General School Information

- Grades Served: 9-12
- Address: 1400 Independence Way, Charlottesville, VA 22902
- Phone: 434-244-3100
- Principal: Beth Costa

Monticello has always had and continues to have a proud tradition of academics, fine arts, athletics and extracurricular events. Our core purpose is to establish a community of learners and learning through relationships, relevance and rigor one student at a time.



**Beth Costa**  
Principal  
2022-Present



### School Quality Profile

For the 2021-22 school year, Monticello received a full accreditation status. For the full School Quality Profile, scan the QR code to the left or visit the [VDOE Monticello High School Quality Profile](#) web page.

### Student Enrollment

#### Historical Fall Membership

	2020-2021	2021-2022	2022-2023
Total Enrollment	1186	1213	1231
Students with Disabilities	14.3%	14.1%	14.5%
English Learners	6.3%	6.0%	7.0%
Economically Disadvantaged	34.8%	31.2%	35.8%

#### Projections for FY 24 Budget

Projected	
Total Enrollment	1150
Economically Disadvantaged	35.1%



### Facility Information

- Built in 1998
- 249,195 square feet
- 70.0-acre site

*Monticello High School is the culminating experience of all **Southern Feeder Pattern** middle and elementary schools.*

### Career Learning Communities

- Geospatial Technologies, Logistics, Robotics & Transportation
- Global Leadership, Law & Social Justice
- Health & Medical Sciences
- Visual Arts

# MONTICELLO HIGH SCHOOL

*Home of the Mustangs*

Monticello					23 Adopted vs. 24 Request		
Expense	19-20 Actuals	20-21 Actuals	21-22 Actuals	22-23 Adopted	23-24 Request	Increase	% Increase
Salary	\$7,421,908	\$7,334,719	\$7,944,597	\$9,283,342	\$9,395,668	\$112,326	1.2%
Other Wages	\$544,044	\$541,170	\$758,292	\$562,360	\$686,340	\$123,980	22.0%
Benefits	\$2,851,001	\$2,935,337	\$3,163,691	\$3,782,202	\$3,714,767	(\$67,435)	-1.8%
Operations	\$503,893	\$422,676	\$563,303	\$561,531	\$482,606	(\$78,925)	-14.1%
Total	\$11,320,846	\$11,233,902	\$12,429,882	\$14,189,435	\$14,279,381	\$89,946	0.6%
State Category Report	19-20 Actuals	20-21 Actuals	21-22 Actuals	22-23 Adopted	23-24 Request	Increase	% Increase
Instruction	\$10,490,777	\$10,521,935	\$11,698,637	\$13,305,647	\$13,287,666	(\$17,981)	-0.1%
Admin/Attend&Health	\$59,666	\$61,228	\$81,509	\$72,047	\$154,715	\$82,668	114.7%
Technology	\$171,540	\$169,793	\$92,601	\$186,889	\$205,309	\$18,420	9.9%
Building Services	\$598,863	\$480,946	\$557,135	\$624,852	\$631,691	\$6,839	1.1%
Total	\$11,320,846	\$11,233,902	\$12,429,882	\$14,189,435	\$14,279,381	\$89,946	0.6%
FTE Summary				22-23 FTE	23-24 FTE		
☐ Instruction				137.86	134.90		
Assistant Principal				3.00	3.00		
Clerical				10.00	9.00		
Other Management				2.00	2.00		
Other Professional				1.00	1.00		
Principal				1.00	1.00		
Teacher^				107.86	103.90		
Teaching Assistant				13.00	15.00		
☐ Admin/Attend&Health				1.00	3.00		
Nurse				1.00	1.00		
Teaching Assistant					2.00		
☐ Technology				2.00	2.00		
Other Technical				1.00	1.00		
Teacher^				1.00	1.00		
☐ Building Services				11.00	11.00		
Custodial				11.00	11.00		
Total				151.86	150.90		
Adjusted FTE^^				145.4	142.4		

^Positions included within the Teacher category are detailed in Section G – Staffing Allocations.

^^ Teaching Assistants (TAs) are allocated at a 2 TA to 1 Teacher ratio. This adjusted number is the FTE allocation to the school.



# WESTERN ALBEMARLE HIGH SCHOOL

*Home of the Warriors*

## Western Albemarle High School

### General School Information

- Grades Served: 9-12
- Address: 5941 Rockfish Gap Turnpike, Crozet, VA 22932
- Phone: 434-823-8700
- Principal: Jennifer Sublette

Western Albemarle High School enjoys a tradition of student success in academics, athletics, and the arts that is a result of a culture of high expectations, supported by the establishment of strong relationships with students and families. Our school community works together to strengthen learning partnerships and expand our support of both academic and social-emotional learning.



**Jennifer Sublette**  
Principal  
2021-Present



### School Quality Profile

For the 2021-22 school year, Western Albemarle received a full accreditation status. For the full School Quality Profile, scan the QR code to the left or visit the [VDOE Western Albemarle High School Quality Profile](#) web page.

### Student Enrollment

#### Historical Fall Membership

	2020-2021	2021-2022	2022-2023
Total Enrollment	1144	1152	1159
Students with Disabilities	11.5%	11.5%	11.1%
English Learners	1.0%	0.9%	0.9%
Economically Disadvantaged	12.3%	11.5%	12.9%

#### Projections for FY 24 Budget

Projected	
Total Enrollment	1116
Economically Disadvantaged	12.7%



### Facility Information

- Built in 1977
- 204,041 square feet
- 75.0-acre site

*Western Albemarle is the culminating experience of all **Western Feeder Pattern** middle and elementary schools.*

### Career Learning Communities

- Hospitality, Eateries, Amusement, Recreation and Tourism
- Environmental Studies
- Architecture, Design & Urban Planning



# WESTERN ALBEMARLE HIGH SCHOOL

## Home of the Warriors

Western Albemarle

23 Adopted vs. 24 Request

Expense	19-20 Actuals	20-21 Actuals	21-22 Actuals	22-23 Adopted	23-24 Request	Increase	% Increase
Salary	\$7,131,282	\$6,740,148	\$7,501,013	\$8,321,440	\$8,365,653	\$44,213	0.5%
Other Wages	\$497,241	\$467,420	\$701,658	\$558,200	\$634,393	\$76,193	13.6%
Benefits	\$2,724,678	\$2,634,582	\$2,873,794	\$3,245,372	\$3,333,650	\$88,278	2.7%
Operations	\$492,180	\$441,437	\$465,438	\$589,278	\$622,656	\$33,378	5.7%
<b>Total</b>	<b>\$10,845,381</b>	<b>\$10,283,586</b>	<b>\$11,541,903</b>	<b>\$12,714,290</b>	<b>\$12,956,352</b>	<b>\$242,062</b>	<b>1.9%</b>

State Category Report	19-20 Actuals	20-21 Actuals	21-22 Actuals	22-23 Adopted	23-24 Request	Increase	% Increase
Instruction	\$10,146,917	\$9,614,865	\$10,754,271	\$11,863,289	\$12,070,185	\$206,896	1.7%
Admin/Attend&Health	\$102,142	\$78,423	\$80,838	\$77,477	\$140,947	\$63,470	81.9%
Technology	\$158,996	\$153,312	\$151,295	\$162,716	\$194,844	\$32,128	19.7%
Building Services	\$437,326	\$436,986	\$555,499	\$610,808	\$550,376	(\$60,432)	-9.9%
<b>Total</b>	<b>\$10,845,381</b>	<b>\$10,283,586</b>	<b>\$11,541,903</b>	<b>\$12,714,290</b>	<b>\$12,956,352</b>	<b>\$242,062</b>	<b>1.9%</b>

FTE Summary	22-23 FTE	23-24 FTE
<b>Instruction</b>	<b>121.62</b>	<b>121.76</b>
Assistant Principal	3.00	3.00
Clerical	10.00	9.00
Other Management	2.00	3.00
Other Professional	1.00	
Principal	1.00	1.00
Teacher^	91.82	88.76
Teaching Assistant	12.80	17.00
<b>Admin/Attend&amp;Health</b>	<b>1.00</b>	<b>3.00</b>
Nurse	0.91	1.00
Other Management	0.09	
Teaching Assistant		2.00
<b>Technology</b>	<b>1.70</b>	<b>2.00</b>
Other Technical	1.00	1.00
Teacher^	0.70	1.00
<b>Building Services</b>	<b>11.00</b>	<b>9.60</b>
Custodial	11.00	9.60
<b>Total</b>	<b>135.32</b>	<b>136.36</b>

Adjusted FTE^^	128.9	126.9
----------------	-------	-------

^Positions included within the Teacher category are detailed in Section G – Staffing Allocations.

^^ Teaching Assistants (TAs) are allocated at a 2 TA to 1 Teacher ratio. This adjusted number is the FTE allocation to the school.

# COMMUNITY LAB SCHOOL

## Community Lab School

### General School Information

- Grades Served: 6-12
- Address: 1200 Forest Street, Charlottesville, VA 22903
- Phone: 434-296-3090
- Principal: Chad Ratliff

ACPS' charter school serves grades 6 through 12 and aims to foster creativity and intellectual curiosity through art and design, experiential learning, mastery, and student agency. This approach aligns CLS directly with the School Board's vision for Learning for All: Our learners are engaged in authentic, challenging, and relevant learning experiences, becoming lifelong contributors and leaders in our dynamic and diverse society. CLS is also an International Baccalaureate (IB) World School, offering the Diploma Program to ACPS 11th and 12th graders.



**Chad Ratliff**  
Principal  
2017-Present



### School Quality Profile

For the 2021-22 school year, Community Lab School received a full accreditation status. For the full School Quality Profile, scan the QR code to the left or visit the [VDOE Community Lab School Quality Profile](#) web page.

### Student Enrollment

#### Historical Fall Membership

	2020-2021	2021-2022	2022-2023
Total Enrollment	162	194	192
Students with Disabilities	21.0%	19.6%	19.8%
English Learners	2.5%	2.1%	2.6%
Economically Disadvantaged	22.2%	4.6%	7.8%

#### Projections for FY 24 Budget

Projected	
Total Enrollment	189
Economically Disadvantaged	24.0%



### Facility Information

- Built in 1959
- 30,915 square feet
- 7.1-acre site

*Albemarle County Public Schools' charter school serves middle and high school students from all three feeder patterns through an admissions process. Murray High School began serving high school students in 1988, while the Community Public Charter School opened to middle school students in 2008. The two schools merged into one charter school in 2020.*

### Career Learning Communities

- International Baccalaureate Program (IB)

# COMMUNITY LAB SCHOOL

## Community Lab School

## 23 Adopted vs. 24 Request

Expense	19-20 Actuals	20-21 Actuals	21-22 Actuals	22-23 Adopted	23-24 Request	Increase	% Increase
Salary	\$1,563,717	\$1,616,739	\$1,846,843	\$1,935,699	\$2,104,967	\$169,268	8.7%
Other Wages	\$21,068	\$53,726	\$84,347	\$44,010	\$49,799	\$5,789	13.2%
Benefits	\$578,468	\$632,632	\$681,138	\$753,435	\$838,370	\$84,935	11.3%
Operations	\$62,433	\$81,362	\$91,929	\$57,331	\$71,779	\$14,448	25.2%
<b>Total</b>	<b>\$2,225,687</b>	<b>\$2,384,459</b>	<b>\$2,704,257</b>	<b>\$2,790,475</b>	<b>\$3,064,915</b>	<b>\$274,440</b>	<b>9.8%</b>

State Category Report	19-20 Actuals	20-21 Actuals	21-22 Actuals	22-23 Adopted	23-24 Request	Increase	% Increase
Instruction	\$2,050,771	\$2,175,786	\$2,513,230	\$2,559,036	\$2,820,531	\$261,495	10.2%
Admin/Attend&Health	\$48,296	\$47,107	\$50,255	\$52,202	\$103,350	\$51,148	98.0%
Technology	\$40,668	\$37,061	\$23,789	\$34,267	\$29,511	(\$4,756)	-13.9%
Building Services	\$85,952	\$124,506	\$116,983	\$144,970	\$111,523	(\$33,447)	-23.1%
<b>Total</b>	<b>\$2,225,687</b>	<b>\$2,384,459</b>	<b>\$2,704,257</b>	<b>\$2,790,475</b>	<b>\$3,064,915</b>	<b>\$274,440</b>	<b>9.8%</b>

FTE Summary	22-23 FTE	23-24 FTE
<b>Instruction</b>	<b>29.29</b>	<b>27.81</b>
Assistant Principal		1.00
Clerical	2.00	2.00
Principal	1.00	1.00
Teacher^	19.77	21.81
Teaching Assistant	6.52	2.00
<b>Admin/Attend&amp;Health</b>	<b>1.00</b>	<b>2.00</b>
Nurse	1.00	1.00
Teaching Assistant		1.00
<b>Technology</b>	<b>0.40</b>	<b>0.40</b>
Other Technical	0.20	0.10
Teacher^	0.20	0.30
<b>Building Services</b>	<b>2.63</b>	<b>2.00</b>
Custodial	2.63	2.00
<b>Total</b>	<b>33.32</b>	<b>32.21</b>

Adjusted FTE^^	30.1	30.7
----------------	------	------

^Positions included within the Teacher category are detailed in Section G – Staffing Allocations.

^^ Teaching Assistants (TAs) are allocated at a 2 TA to 1 Teacher ratio. This adjusted number is the FTE allocation to the school.

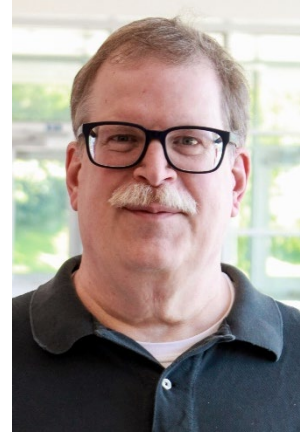
# CENTER I

## Center I

### General Information

- Address: 1180 Seminole Trail, Suite 225, Charlottesville, VA 22901
- Phone: 434-244-8900
- Director: Jeff Prillaman

Center I is Albemarle County Public School's high school specialty center that hosts an Information and Communication Technology learning community. As a learning center designed to support students exploring their passions and interests, the student experience over three years evolves from introductory coursework to capstone projects that include self-directed and work-based learning experiences. The passion, problem, and project-based approach to instruction bring together both elective course work within the ICT field along with academic courses to ensure students see purpose and relevance in their work at Center I.



**Jeff Prillaman**  
Director  
2022-Present

Center I serves students in grades 10, 11, and 12 within the ICT learning community while also continuing to offer a range of experiences for students in their senior year. On a collegiate schedule, with college faculty, students can elect to sign up for Composition I and II and US Government I and II to meet their English 12 and US/VA Government graduation requirements. Students can also participate in a self-directed learning experience where, with the support of Center I faculty, they can complete a Senior Capstone Project in an area of interest. A Senior Capstone Project can focus on one large project or be composed of several smaller ones. The outcomes of the project are determined by the student and may include high school course credit, earning an industry-recognized credential, participation in a work-based learning experience, and/or completion of a robust portfolio to support career and college aspirations.

### Student Enrollment<sup>1</sup>

#### Historical Enrollment

	2020-2021	2021-2022	2022-2023
Daily Enrollment	55	76	99

#### Projections for FY 24 Budget

Projected	
Daily Enrollment	120
Economically Disadvantaged	28.2



### Facility Information

- Opened in 2018
- 42,274 square feet (all programs)
- Located in the Seminole Place complex

### Career Learning Communities

- Information & Communication Technology

<sup>1</sup> Enrollment shown is daily enrollment. Total student enrollment is double the daily enrollment.  
School Locations: D-60

# CENTER I

Center I						23 Adopted v. 24 Request	
Expense	19-20 Actuals	20-21 Actuals	21-22 Actuals	22-23 Adopted	23-24 Request	Increase	% Increase
Salary	\$177,816	\$346,578	\$502,938	\$742,044	\$935,660	\$193,616	26.1%
Other Wages	\$44	\$7,260	\$18,033	\$10,617	\$27,913	\$17,296	162.9%
Benefits	\$69,937	\$128,558	\$188,072	\$283,737	\$348,657	\$64,920	22.9%
Operations	\$77,807	\$34,775	\$64,470	\$70,349	\$63,877	(\$6,472)	-9.2%
Total	\$325,604	\$517,171	\$773,512	\$1,106,747	\$1,376,107	\$269,360	24.3%
State Category Report	19-20 Actuals	20-21 Actuals	21-22 Actuals	22-23 Adopted	23-24 Request	Increase	% Increase
Instruction	\$275,909	\$491,751	\$728,552	\$1,062,779	\$1,263,788	\$201,009	18.9%
Admin/Attend&Health	\$49,695	\$25,420	\$44,961	\$43,968	\$47,756	\$3,788	8.6%
Building Services					\$64,563	\$64,563	
Total	\$325,604	\$517,171	\$773,512	\$1,106,747	\$1,376,107	\$269,360	24.3%
FTE Summary				22-23 FTE	23-24 FTE		
☐ Instruction				11.76	12.66		
Assistant Principal				1.00			
Clerical				1.00	1.00		
Teacher^				8.76	10.66		
Teaching Assistant				1.00	1.00		
☐ Admin/Attend&Health				1.00	1.00		
Nurse				1.00	1.00		
☐ Building Services					1.00		
Custodial					1.00		
Total				12.76	14.66		
Adjusted FTE^^				12.3	14.2		

^Positions included within the Teacher category are detailed in Section G – Staffing Allocations.

^^ Teaching Assistants (TAs) are allocated at a 2 TA to 1 Teacher ratio. This adjusted number is the FTE allocation to the school.



# POST HIGH

## Post High

### General Information

- Address: 915 Henry Avenue, Charlottesville, VA 22903
- Phone: 434-977-4610
- Coordinator: Emily Blase

Post High serves 18- to 22-year-old students with a variety of special capacities. The Post High program is designed to provide supported transitions from the traditional school setting to an adult life in the community. Students receive instruction in employment skills, functional academic skills, social skills, and independent living skills according to an individualized education plan. The Post High staff work closely with the students, their families, and appropriate adult service agencies to facilitate a positive transition.



**Emily Blase**  
Coordinator  
2022-Present

Post High's specialized instruction includes focuses on:

- Vocational Skills — Developing the ability to secure, maintain and be successful in the workplace and on the job.
- Functional Academic Skills — Continuing to develop academic achievement in the context of everyday life.
- Social Skills — Increasing the capacity to engage peers, family and people in the community and workplace through communication and behaviors that promote positive relationships.
- Independent Living Skills — Learning and practicing competencies needed to experience a rewarding and productive life while engaging the community in which we live.

Prior to FY 2020/21, this budget was previously shown as part of *Albemarle High School*.

### Student Enrollment

#### Historical Fall Membership

	2019-2020	2020-2021	2021-2022
Total Enrollment	25	21	22

#### Projections for FY 24 Budget

Projected	
Total Enrollment	26



### Facility Information

- Opened in 2002
- 2,350 square feet
- Located behind Burley Middle School

# POST HIGH

Post High						23 Adopted v. 24 Adopted	
Expense	19-20 Actuals	20-21 Actuals	21-22 Actuals	22-23 Adopted	23-24 Request	Increase	% Increase
Salary		\$268,972	\$322,220	\$372,415	\$496,335	\$123,920	33.3%
Other Wages		\$7,283	\$9,000	\$0	\$0	\$0	
Benefits		\$143,161	\$152,400	\$178,366	\$218,155	\$39,789	22.3%
<b>Total</b>		<b>\$419,416</b>	<b>\$483,620</b>	<b>\$550,781</b>	<b>\$714,490</b>	<b>\$163,709</b>	<b>29.7%</b>

State Category Report	19-20 Actuals	20-21 Actuals	21-22 Actuals	22-23 Adopted	23-24 Request	Increase	% Increase
Instruction		\$419,416	\$483,620	\$550,781	\$714,490	\$163,709	29.7%
<b>Total</b>		<b>\$419,416</b>	<b>\$483,620</b>	<b>\$550,781</b>	<b>\$714,490</b>	<b>\$163,709</b>	<b>29.7%</b>

FTE Summary	22-23 FTE	23-24 FTE
<input type="checkbox"/> Instruction	<b>9.33</b>	<b>12.00</b>
Teacher^	3.33	4.00
Teaching Assistant	6.00	8.00
<b>Total</b>	<b>9.33</b>	<b>12.00</b>

Adjusted FTE^^	6.3	8.0
----------------	-----	-----

^ Positions included within the Teacher category are detailed in Section G – Staffing Allocations.

^^ Teaching Assistants (TAs) are allocated at a 2 TA to 1 Teacher ratio. This adjusted number is the FTE allocation to the school.

^^^ Prior to 21-22 this budget was included in as part of Albemarle High School.

# CATEC

## Charlottesville Albemarle Technical Education Center (CATEC)

### General Information

- Address: 1000 East Rio Road, Charlottesville, VA 22901
- Phone: 434-973-4461
- Director: Stephanie Carter

The Charlottesville-Albemarle Technical Education Center (CATEC) is a regional technical education center that serves Albemarle County and Charlottesville City. CATEC offers a wide variety of skilled-trades and CTE electives that train high school students to pursue their passion through a fulfilling career. Students have opportunities to practice hands-on and work-based learning activities alongside academically driven curricula that enables them to earn dual-enrollment college credit, achieve industry certifications, and practice workplace readiness skills. CATEC prides itself on its integrated value, equity-based programs, and contribution to students' learning journeys.



**Stephanie Carter**  
Director  
2019-Present

### Student Enrollment: Fall Membership

	2019-2020	2020-2021	2021-2022
Total Enrollment*	297	290	295
Total ACPS Enrollment	217	230	224

*\*Includes ACPS students, Charlottesville City Schools students, and out-of-district/homeschool students*



### Facility Information

- Built in 1972
- 59,800 square feet
- 19.5-acre site

*CATEC is operated jointly by Albemarle County Public Schools and Charlottesville City Schools.*

### Career Learning Communities

- Health & Medical Sciences
- Skilled Trades

# CATEC

C.A.T.E.C						23 Adopted v. 24 Adopted	
Expense	19-20 Actuals	20-21 Actuals	21-22 Actuals	22-23 Adopted	23-24 Request	Increase	% Increase
Salary			\$123,664	\$155,885	\$223,318	\$67,433	43.3%
Benefits			\$55,446	\$66,889	\$104,292	\$37,403	55.9%
Operations	\$1,770,408	\$1,775,695	\$2,020,362	\$2,142,530	\$2,276,413	\$133,883	6.2%
<b>Total</b>	<b>\$1,770,408</b>	<b>\$1,775,695</b>	<b>\$2,199,472</b>	<b>\$2,365,304</b>	<b>\$2,604,023</b>	<b>\$238,719</b>	<b>10.1%</b>

State Category Report	19-20 Actuals	20-21 Actuals	21-22 Actuals	22-23 Adopted	23-24 Request	Increase	% Increase
Instruction	\$1,770,408	\$1,773,175	\$2,226,666	\$2,365,304	\$2,604,023	\$238,719	10.1%
Admin/Attend&Health			\$1,077		\$0	\$0	
Building Services		\$2,520	\$3,229		\$0	\$0	
<b>Total</b>	<b>\$1,770,408</b>	<b>\$1,775,695</b>	<b>\$2,230,972</b>	<b>\$2,365,304</b>	<b>\$2,604,023</b>	<b>\$238,719</b>	<b>10.1%</b>

FTE Summary		22-23 FTE	23-24 FTE
<input type="checkbox"/> Instruction		3.33	5.00
Teacher^		1.33	2.00
Teaching Assistant		2.00	3.00
<b>Total</b>		<b>3.33</b>	<b>5.00</b>

Adjusted FTE^^	2.3	3.5
----------------	-----	-----

^Positions included within the Teacher category are detailed in Section G – Staffing Allocations.

^^ Teaching Assistants (TAs) are allocated at a 2 TA to 1 Teacher ratio. This adjusted number is the FTE allocation to the school.

## Center for Learning & Growth

### General Information

- Address: 225 Lambs Lane, Charlottesville, VA 22901
- Phone: 434-974-8070
- Coordinator: Kevin Kirst

The Center for Learning and Growth is the ACPS alternative learning program. The program recognizes that a restorative approach to the referral concerns, continued instruction and maintaining a connection to the student's neighborhood school is critical to the success of any specialized short-term intervention to ensure student success. Specialized support to individual students that require an alternative learning plan is available via a Superintendent referral for students in grades 6 through 12.

The staff provides a warm and welcoming experience for the students they serve. Students served by the Center for Learning and Growth are offered the opportunity to work through the events that led to their referral in a restorative context while continuing their learning with additional support that includes a blend of face-to-face instruction and computer-based instruction. The program offers the services of a caring staff who collaborate with each student's base school, including family and community partners to wrap around the student to meet the instructional, social and emotional needs of each student. Students eligible for services by the Center for Learning and Growth are typically determined by the Director of Student Services in cooperation with the school principal, parent, and student. Student referrals for services are also made through the Office of the Superintendent and as a result of School Board action.

Prior to FY 2021-22, this budget was previously included within Other Multi-School Services.

Center For Learning & Growth						23 Adopted v. 24 Request	
Expense	19-20 Actuals	20-21 Actuals	21-22 Actuals	22-23 Adopted	23-24 Request	Increase	% Increase
Salary		\$141,230	\$280,688	\$322,519	\$297,503	(\$25,016)	-7.8%
Other Wages		\$4,000	\$4,000	\$21,092	\$0	(\$21,092)	-100.0%
Benefits		\$51,693	\$102,761	\$118,722	\$110,010	(\$8,712)	-7.3%
<b>Total</b>		<b>\$196,923</b>	<b>\$387,448</b>	<b>\$462,333</b>	<b>\$407,513</b>	<b>(\$54,820)</b>	<b>-11.9%</b>
State Category Report	19-20 Actuals	20-21 Actuals	21-22 Actuals	22-23 Adopted	23-24 Request	Increase	% Increase
Instruction		\$196,923	\$387,448	\$462,333	\$407,513	(\$54,820)	-11.9%
<b>Total</b>		<b>\$196,923</b>	<b>\$387,448</b>	<b>\$462,333</b>	<b>\$407,513</b>	<b>(\$54,820)</b>	<b>-11.9%</b>
FTE Summary				22-23 FTE	23-24 FTE		
<input type="checkbox"/> Instruction				4.34	4.34		
Teacher^				4.34	4.34		
<b>Total</b>				<b>4.34</b>	<b>4.34</b>		
Adjusted FTE^^				4.3	4.3		

^ Positions included within the Teacher category are detailed in Section G – Staffing Allocations.

^^ Teaching Assistants (TAs) are allocated at a 2 TA to 1 Teacher ratio. This adjusted number is the FTE allocation to the school.



## Other Multi-School Services

This area is for staff that are typically assigned to schools throughout the year but are not yet currently assigned to a specific school. Examples of this include emergency staffing and some new proposals. They are assigned throughout the year to meet specific needs at individual schools.

Multi-School Services						23 Adopted v. 24 Request	
Expense	19-20 Actuals	20-21 Actuals	21-22 Actuals	22-23 Adopted	23-24 Request	Increase	% Increase
Salary	\$3,692,153	\$3,769,402	\$3,833,307	\$7,367,137	\$8,068,632	\$701,495	9.5%
Other Wages	\$93,257	\$173,422	\$348,756	\$300,109	\$211,451	(\$88,658)	-29.5%
Benefits	\$2,264,403	\$2,419,286	\$3,500,277	\$3,876,266	\$4,159,739	\$283,473	7.3%
Operations			\$6,594				
<b>Total</b>	<b>\$6,049,813</b>	<b>\$6,362,110</b>	<b>\$7,688,933</b>	<b>\$11,543,512</b>	<b>\$12,439,822</b>	<b>\$896,310</b>	<b>7.8%</b>
State Category Report	19-20 Actuals	20-21 Actuals	21-22 Actuals	22-23 Adopted	23-24 Request	Increase	% Increase
Instruction	\$4,883,989	\$5,055,282	\$4,099,920	\$8,917,034	\$9,251,595	\$334,561	3.8%
Admin/Attend&Health	\$807,514	\$1,146,503	\$3,463,117	\$1,851,493	\$2,184,600	\$333,107	18.0%
Technology	\$81,664	\$69,153	\$6,594	\$66,499	\$96,957	\$30,458	45.8%
Building Services	\$276,647	\$91,172	\$119,302	\$708,486	\$906,670	\$198,184	28.0%
<b>Total</b>	<b>\$6,049,813</b>	<b>\$6,362,110</b>	<b>\$7,688,933</b>	<b>\$11,543,512</b>	<b>\$12,439,822</b>	<b>\$896,310</b>	<b>7.8%</b>
FTE Summary				22-23 FTE	23-24 FTE		
<input type="checkbox"/> <b>Instruction</b>				<b>78.27</b>	<b>81.55</b>		
Assistant Principal - Intern				2.00	2.00		
Clerical				1.00			
Other Management				0.10			
Social Worker				0.50	2.50		
Teacher^				74.67	67.05		
Teaching Assistant					10.00		
<input type="checkbox"/> <b>Admin/Attend&amp;Health</b>				<b>22.20</b>	<b>23.20</b>		
Clerical					1.00		
Other Professional				8.00	8.00		
Psychologist				14.20	14.20		
<input type="checkbox"/> <b>Technology</b>				<b>0.50</b>	<b>1.00</b>		
Other Technical					1.00		
Teacher^				0.50			
<input type="checkbox"/> <b>Building Services</b>				<b>13.18</b>	<b>16.06</b>		
Custodial				13.18	16.06		
<b>Total</b>				<b>114.15</b>	<b>121.81</b>		
Adjusted FTE^^				114.2	116.8		

^Positions included within the Teacher category are detailed in Section G – Staffing Allocations.

^^ Teaching Assistants (TAs) are allocated at a 2 TA to 1 Teacher ratio. This adjusted number is the FTE allocation to the school.

## Other Multi-School Services

### ***FY 24 Request FTEs***

1.0	Floating Bookkeeper (Clerical)
47.7	Special Education Specialists
6.6	ESOL Teachers
14.2	Psychologists
8.0	Student Safety Coaches
2.0	Assistant Principal Interns
4.0	SEAD Teachers
5.8	Emergency Staffing Teachers
3.5	Reduce Class Loads Teachers
16.1	Custodians
2.0	ECSE Teachers (Pre-school)
5.0	School Based Substitutes
1.0	Technology Support Specialist
<b>116.8</b>	