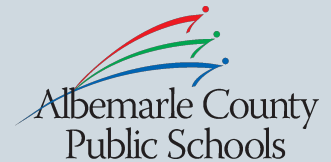




REDISTRICTING ADVISORY COMMITTEE FOR THE EXPANSION OF CROZET ELEMENTARY

MEETING #4
NOVEMBER 16, 2021



AGENDA

1

REVIEW OF OBJECTIVE AND GUIDING PRINCIPLES

2

OVERVIEW OF SCHOOL FUNDING

3

REVIEW SCENARIOS, PROJECTIONS AND FEEDBACK

4

DISCUSSION AND SELECTION OF FINAL RECOMMENDATION

5

NEXT STEPS

STUDY OBJECTIVE

The purpose of this study is to address current and projected overcrowding at Brownsville Elementary. The proposed scope of the study will involve Brownsville and Crozet Elementary Schools only.

GUIDING PRINCIPLES

Attendance areas will serve the district for at least 3-5 years with a goal of 5-7 years

Attendance areas will be largely contiguous

Walk areas for each school will be considered

Transportation routes will be as efficient as possible, giving consideration to minimizing ride times within acceptable parameters

Neighborhoods will be assigned to the same school whenever possible

Greater demographic balance amongst impacted schools will be strived for where feasible

Grandfathering existing students will be considered by the Board on a study by study basis.

FOLLOW OUR PROCESS

VISIT OUR WEBPAGE

Visit the webpage for the Brownsville and Crozet Redistricting study to view the background, scope, committee meeting schedule and more.

LIVESTREAM OUR MEETINGS

Livestream the committee meetings to listen in on the conversation around redistricting. This link can be found on the webpage.

EMAIL THE COMMITTEE

We have established an email address dedicated to this redistricting. Please note that this email is only to submit feedback and no response will be provided.

k12albemarle.org/redistricting

|

RAC@k12albemarle.org

SCHEDULE



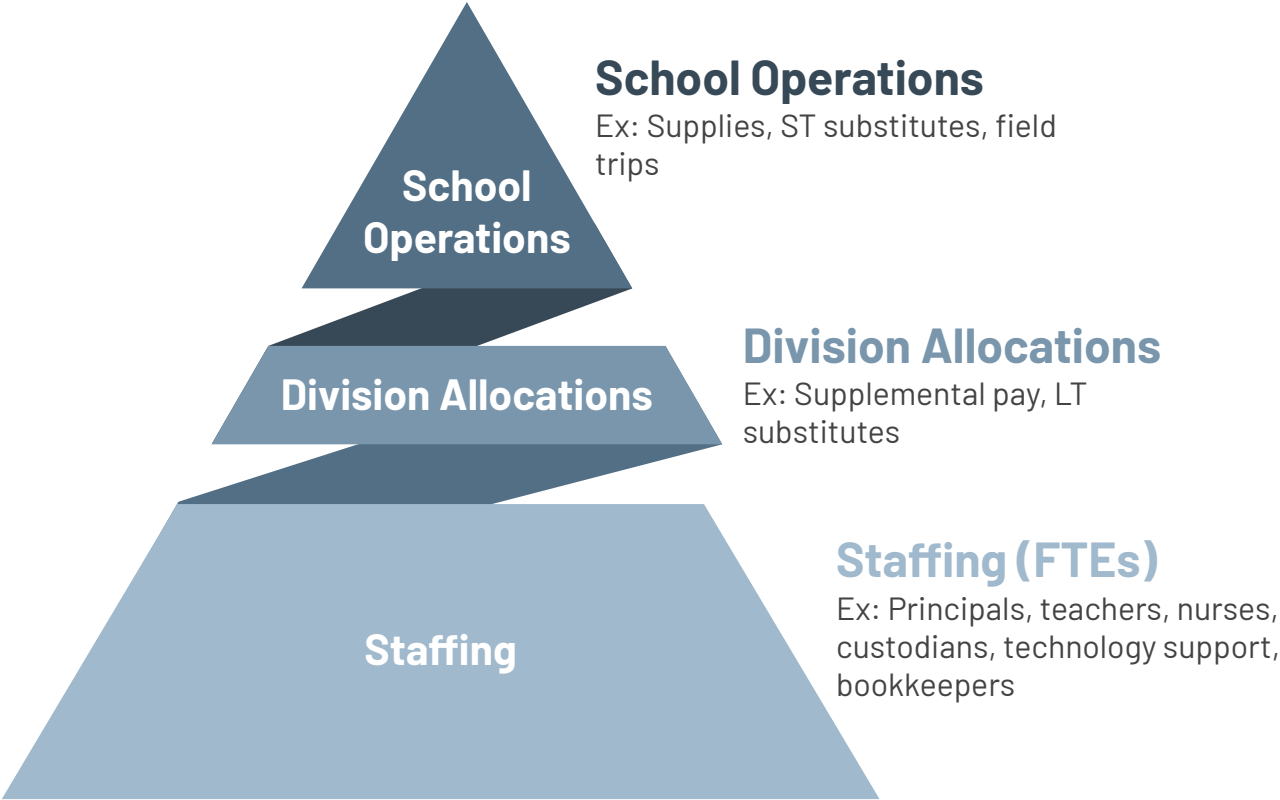
August 2021	<p>School Board approves scope of study and directs Superintendent to convene committee and conduct study</p> <p>Superintendent advertises and receives applications for the committee</p>
September 2021	<p>Superintendent appoints committee members and begins sharing information</p> <p>Initial meeting of redistricting committee</p>
October 2021	<p>Committee meets two times to develop multiple redistricting scenarios</p>
November 2021	<p>Two community meetings held to share scenarios and receive feedback</p> <p>Committee meets to finalize recommendation to the Superintendent</p>
December 2021	<p>Superintendent presents his recommendation to School Board</p>
January 2022	<p>School Board holds a public hearing</p> <p>School Board votes on the Superintendent's recommendation</p>
February - August 2022	<p>Families are notified and transition activities take place</p>
2022-23 School Year	<p>New boundaries go into effect</p>

TONIGHT'S PURPOSE

- Identify a final redistricting scenario to present to Dr. Haas

SCHOOL BUDGETS

Link: [FY 22 Adopted Budget, Section G](#)



SCHOOL STAFFING ALLOCATIONS

Enrollment Projections + Staffing Standards = Staffing Allocations

Example Elementary School with 560 K-5 students

Note: Shown for illustrative purposes only. Actual allocations may vary.

Base Staffing	Enrollment-based	Demographic-based	Other Factors
1 Principal 1 Nurse 1 Counselor 2 Clerical	1.0 Assistant Principal 0.5 Clerical 26.4 Classroom Teachers 1.7 Teaching Assistants 1.5 Art Teacher 1.5 Music Teacher 2.7 PE Teacher 1.0 Media Specialist 1.0 Talent Dev. (TDRT)	English as a Second or Other Language (ESOL) Special Education (SPED) Response to Intervention (RTI) Differentiated Staffing (DS)	5.0 Custodial 0.5 Technology Supp. (TSS) 0.5 Learning Tech. Int. (LTI)

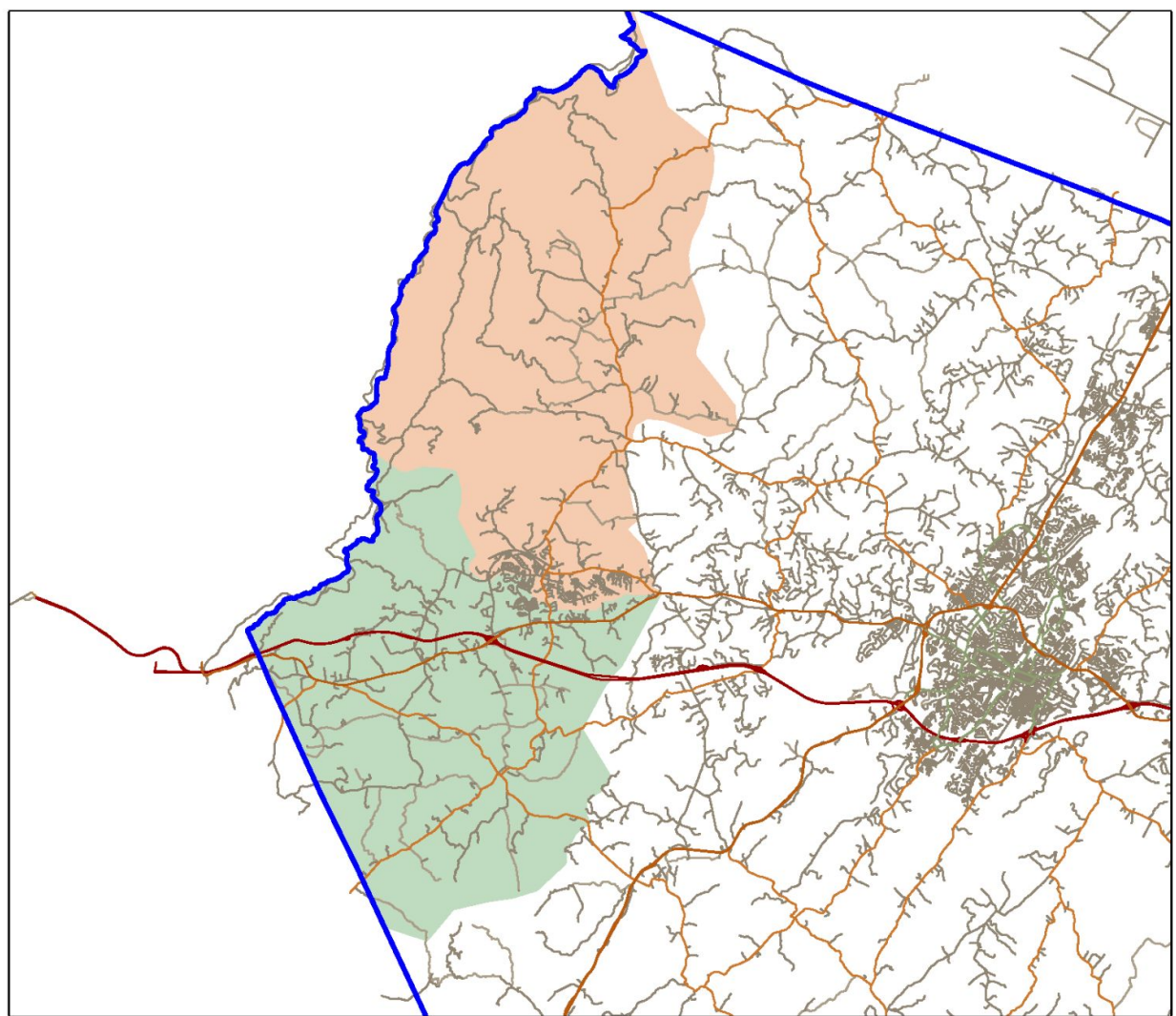
SCHOOL OPERATIONS

General Allocation +	Program Allocation +	Projections
Base + Per Pupil Amount + Economically Disadv. PPA Principal's Discretion to spend on supplies, field trips, copiers, etc.	Intervention/Prevention + PALS + Special Education Limited to spending on these programs	Donations + Building Rental Fees + Carryover Estimates only, distribution based on actual revenues during the year, Principal's discretion



SCENARIOS

SCENARIO 2



SCENARIO 2

Grayrock (25)

Rt 240 to Oak Dr (7)

Waylands/Bargamin (32)

Western Ridge/Foothill

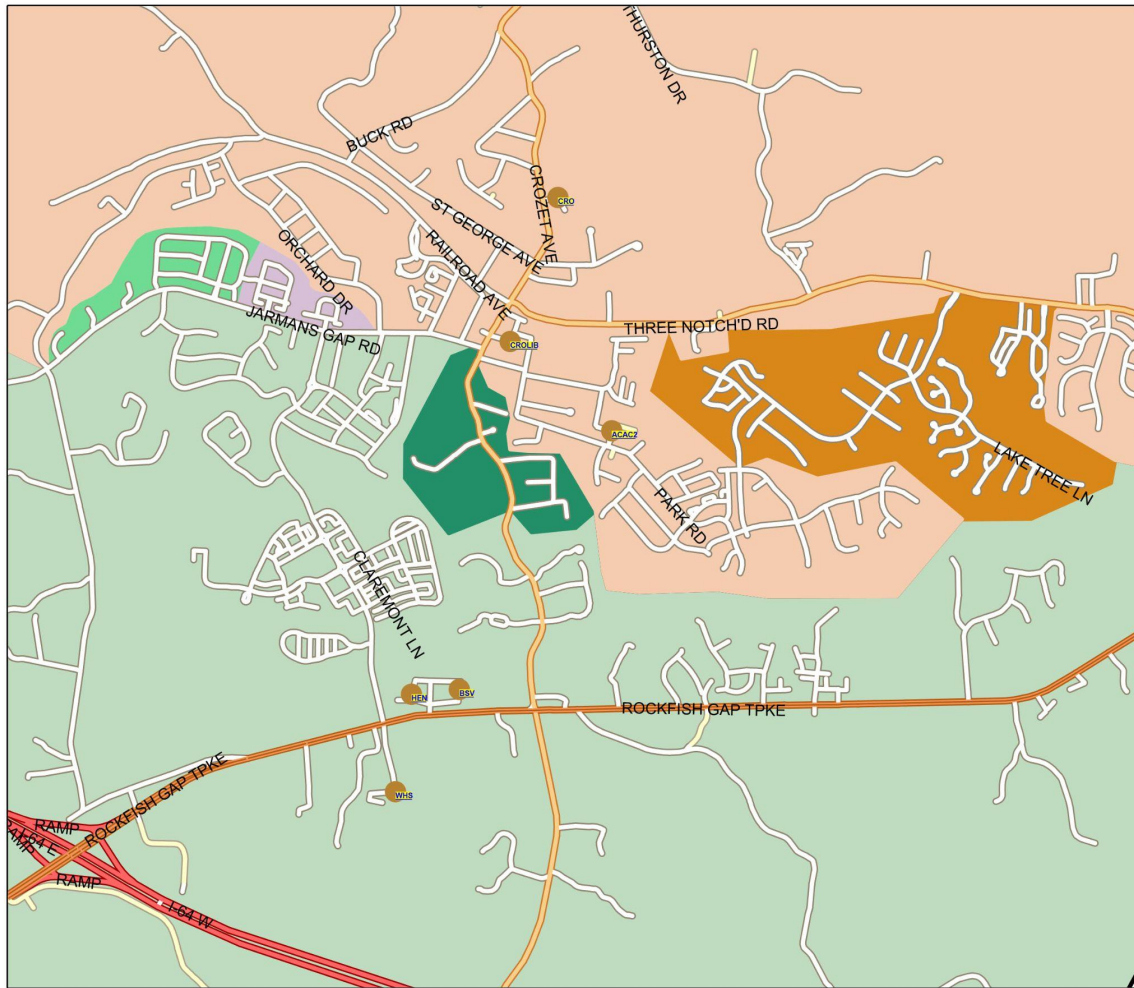
Crossing/Wickham Pond (162)

K-5 students moved: 226¹

Total K-5 Crozet Students: 536

Total K-5 Brownsville Students: 510

¹Does not include preschool. Based on current year student information only and does not reflect future years.



DEMOGRAPHIC IMPACT – SCENARIO 2

School		Race/Ethnicity					Econ. Disadvan.	English Learner	Difference in Enrollment
		Black	Hispanic/ Latino	White	Asian	Multirace			
Brownsville	Before	2.21%	4.42%	82.18%	5.39%	5.66%	12.02%	1.66%	-226
	After	2.66%	4.92%	83.20%	3.89%	5.12%	16.19%	1.23%	
Crozet	Before	1.56%	8.44%	84.06%	1.88%	3.75%	19.69%	2.19%	226
	After	1.44%	6.29%	82.37%	4.68%	5.04%	12.77%	2.34%	

SCENARIO 2 CAPACITY IMPACTS

Brownsville Elementary Capacity: 756 students

	2019-20	2021-22
Adjusted Enrollment	562	510
Cushion/(Conflict)	194	246
Percent Capacity	74%	67%

Long-term potential student yield
from new developments: 43-147*

Crozet Elementary Capacity: 668 students

	2019-20	2021-22
Adjusted Enrollment	628	536
Cushion/(Conflict)	40	132
Percent Capacity	94%	80%

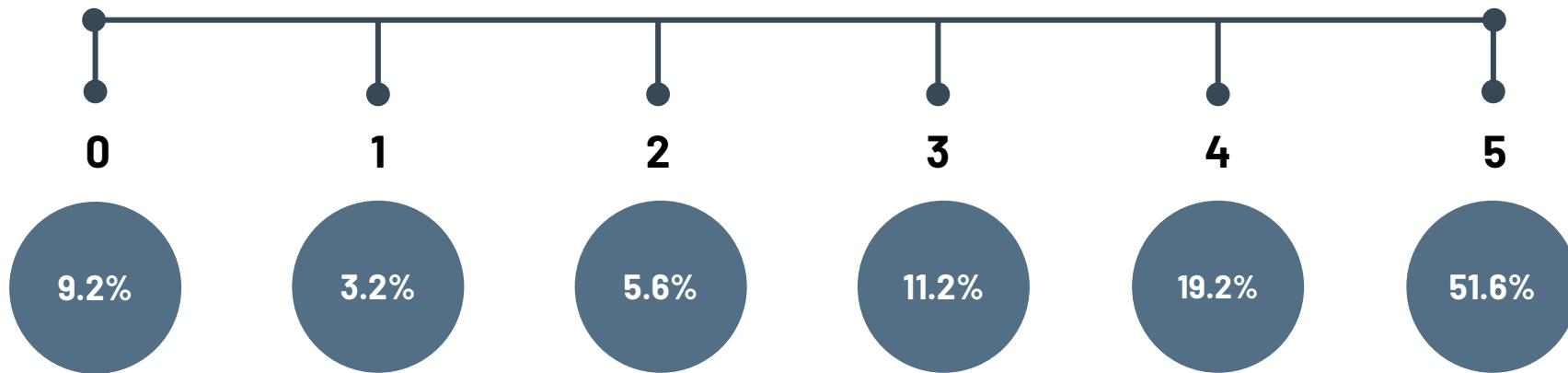
Long term potential student yield from
new developments: 73-98

*Includes Old Trail, which assumes a projected build out of 1,200 units. (Maximum build out is 2,200 units.)
Ranges are shown to represent an undetermined mix of housing unit types.

I am
generally
dissatisfied

SCENARIO 2 SURVEY RESPONSES

I am
generally
satisfied

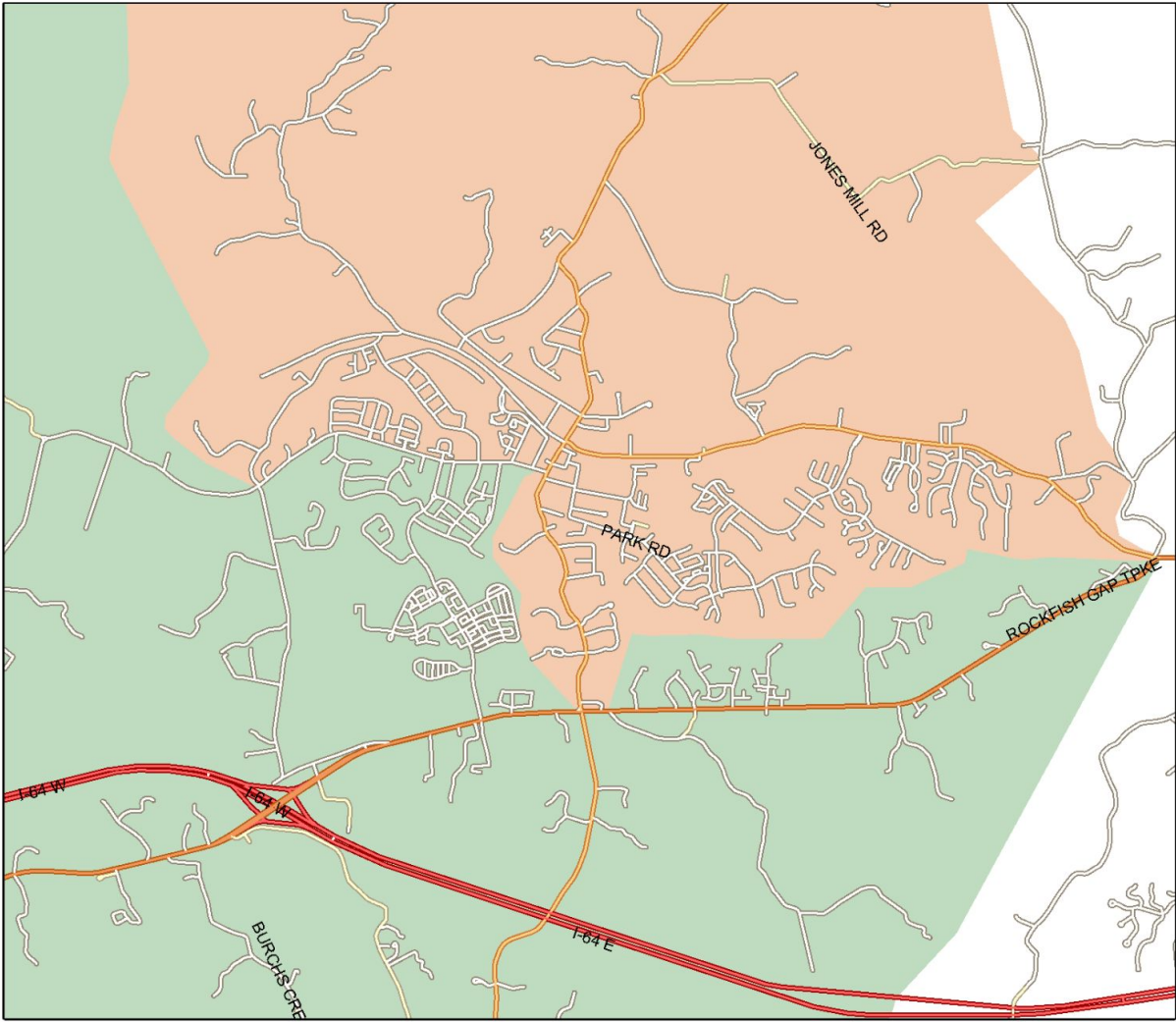


Additional Comments

- Creates balance of enrollment numbers at both schools, and leaves room for growth at both schools
- Keeps ride times for students reasonable
- Lessens traffic on 240

- Makes geographic sense to keep nearby neighborhood at the closest school
- It moves the fewest number of students, which may not be enough to avoid overcrowding in the future
- Keeps neighborhoods intact

SCENARIO 2.1



SCENARIO 2.1

Grayrock (25)

Rt 240 to Rt. 250 (34)

Waylands/Bargamin (32)

Western Ridge/Foothill

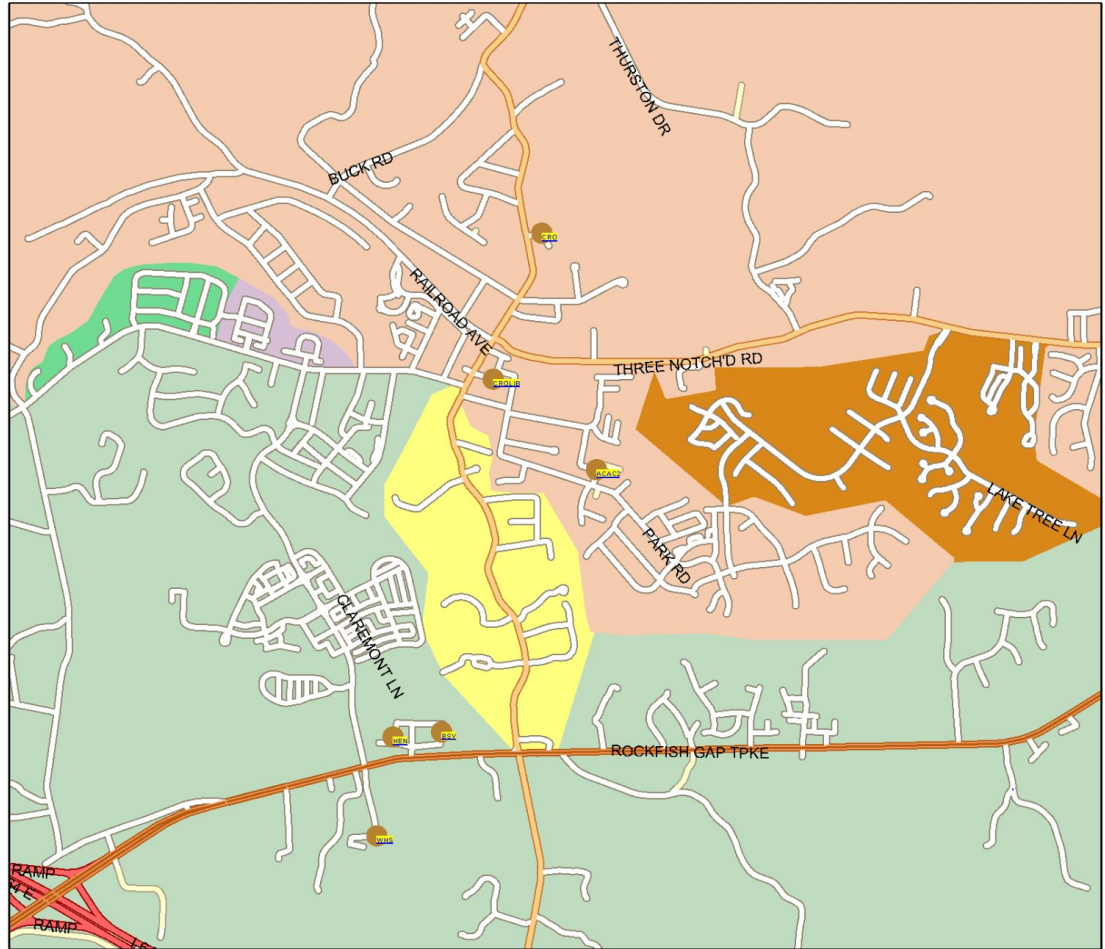
Crossing/Wickham Pond (162)

K-5 students moved: 253¹

Total K-5 Crozet Students: 563

Total K-5 Brownsville Students: 483

¹Does not include preschool. Based on current year student information only and does not reflect future years.



DEMOGRAPHIC IMPACT – SCENARIO 2.1

School		Race/Ethnicity					Econ. Disadvan.	English Learner	Difference in Enrollment
		Black	Hispanic/ Latino	White	Asian	Multirace			
Brownsville	Before	2.21%	4.42%	82.18%	5.39%	5.66%	12.02%	1.66%	-256
	After	2.83%	5.22%	83.70%	3.26%	4.78%	17.17%	1.30%	
Crozet	Before	1.56%	8.44%	84.06%	1.88%	3.75%	19.69%	2.19%	256
	After	1.37%	5.99%	82.02%	5.14%	5.31%	12.16%	2.23%	

SCENARIO 2.1 CAPACITY IMPACTS

Brownsville Elementary Capacity: 756 students

	2019- 20	2021- 22
Adjusted Enrollment	570	517
Cushion/(Conflict)	186	239
Percent Capacity	75%	68%

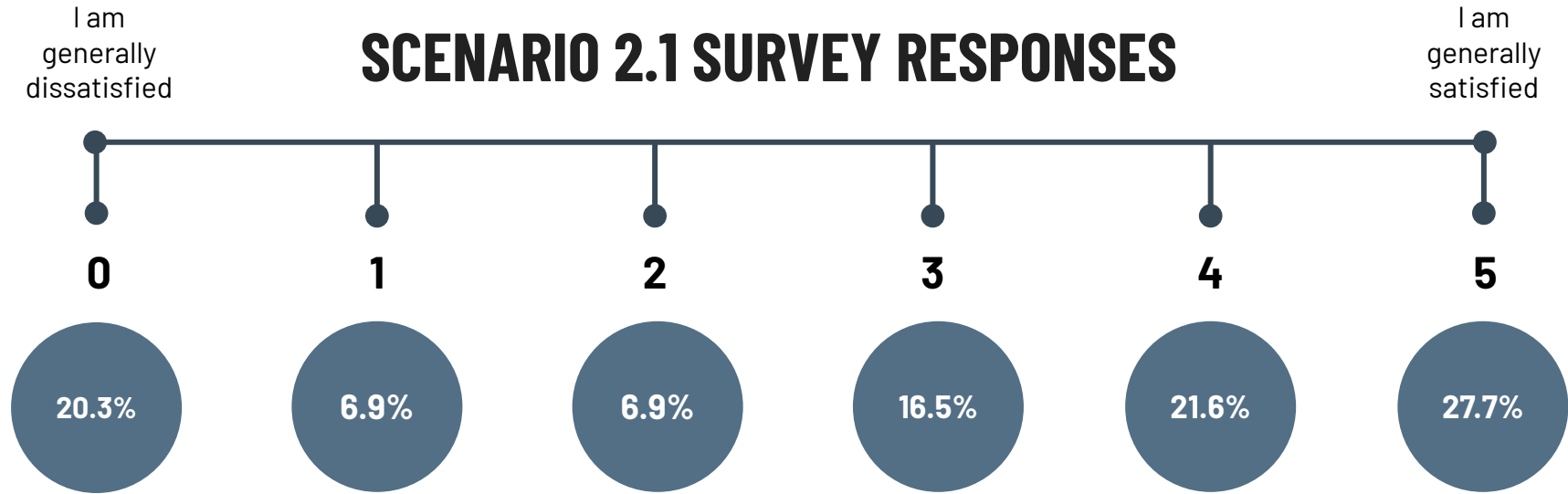
Long-term potential student yield from new developments: 41-145*

Crozet Elementary Capacity: 668 students

	2019- 20	2021- 22
Adjusted Enrollment	620	529
Cushion/(Conflict)	48	139
Percent Capacity	93%	79%

Long term potential student yield from new developments: 75-100

*Includes Old Trail, which assumes a projected build out of 1,200 units. (Maximum build out is 2,200 units.)
Ranges are shown to represent an undetermined mix of housing unit types.

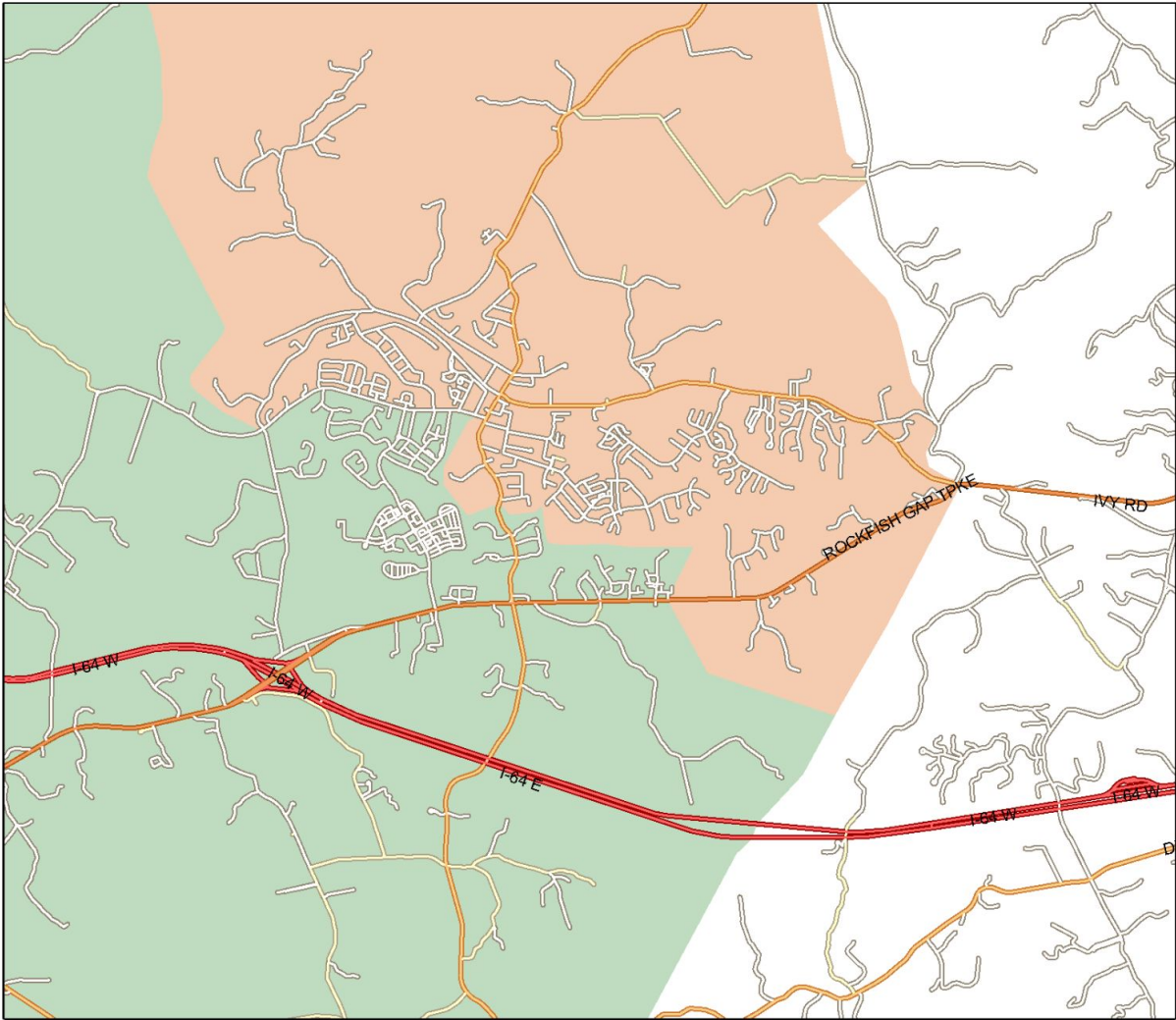


Additional Comments

- Some of the redistricted students are able to walk to Brownsville now (e.g. Chesterfield Landing) and will require car/bus transportation to get to Crozet

- Possibly moves too many students to Crozet
- May increase traffic through downtown Crozet during morning commute

SCENARIO 3



SCENARIO 3

East of Clover Lawn to Mechums
River (19)

Grayrock (25)

Rt 240 to Oak Dr (7)

Waylands/Bargamin (32)

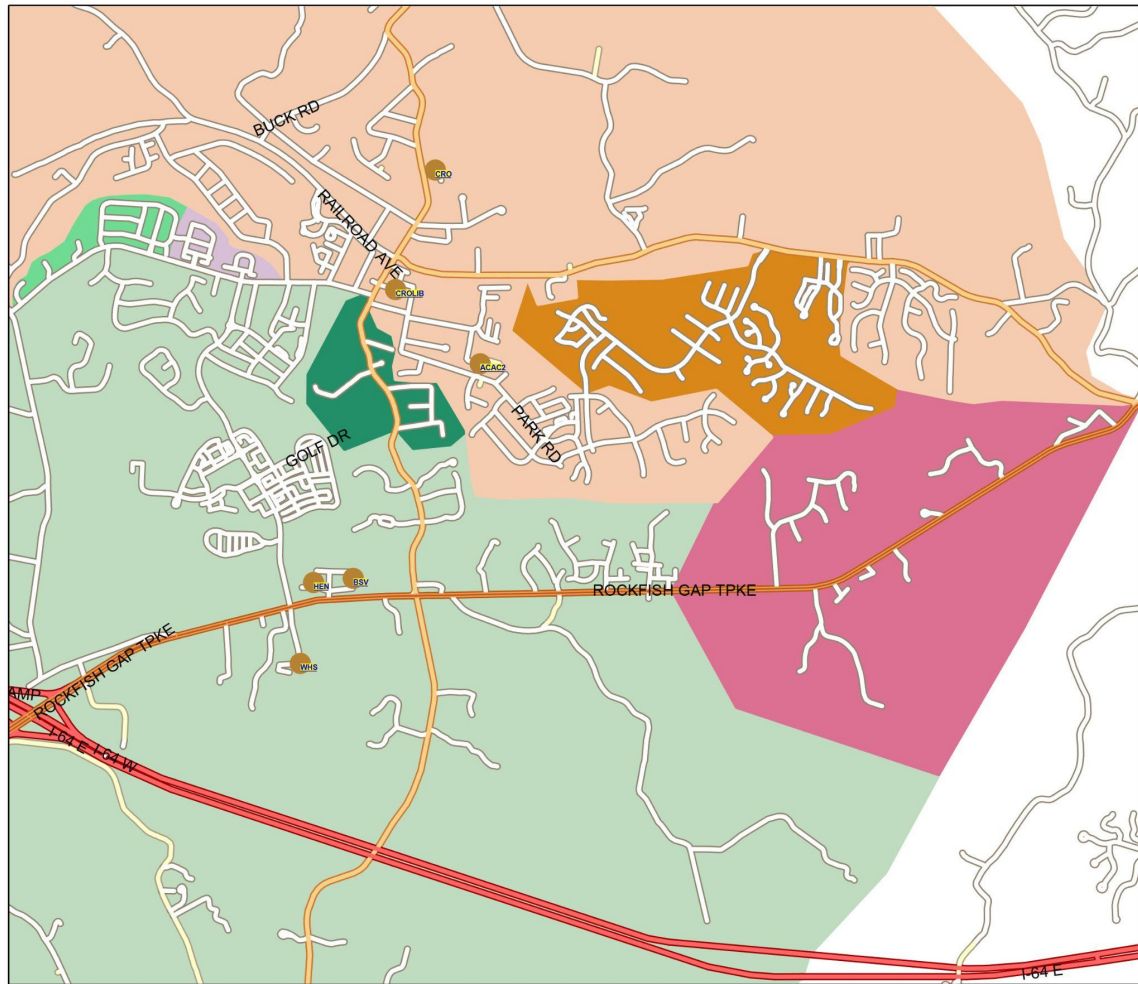
Western Ridge/Foothill
Crossing/Wickham Pond (162)

K-5 students moved: 245¹

Total K-5 Crozet Students: 555

Total K-5 Brownsville Students: 491

¹Does not include preschool. Based on current year student information only and does not reflect future years.



DEMOGRAPHIC IMPACT – SCENARIO 3

School		Race/Ethnicity					Econ. Disadvan.	English Learner	Difference in Enrollment
		Black	Hispani/ Latino	White	Asian	Multirace			
Brownsville	Before	2.21%	4.42%	82.18%	5.39%	5.66%	12.02%	1.66%	-247
	After	2.77%	5.12%	82.73%	4.05%	5.12%	16.84%	1.28%	
Crozet	Before	1.56%	8.44%	84.06%	1.88%	3.75%	19.69%	2.19%	247
	After	1.39%	6.09%	82.78%	4.52%	5.04%	12.35%	2.26%	

SCENARIO 3 CAPACITY IMPACTS

Brownsville Elementary

Capacity: 756 students

	2019-20	2021-22
Adjusted Enrollment	541	491
Cushion/(Conflict)	215	265
Percent Capacity	72%	65%

Long-term potential student yield from new developments: 43-147*

Crozet Elementary

Capacity: 668 students

	2019-20	2021-22
Adjusted Enrollment	649	555
Cushion/(Conflict)	19	113
Percent Capacity	97%	83%

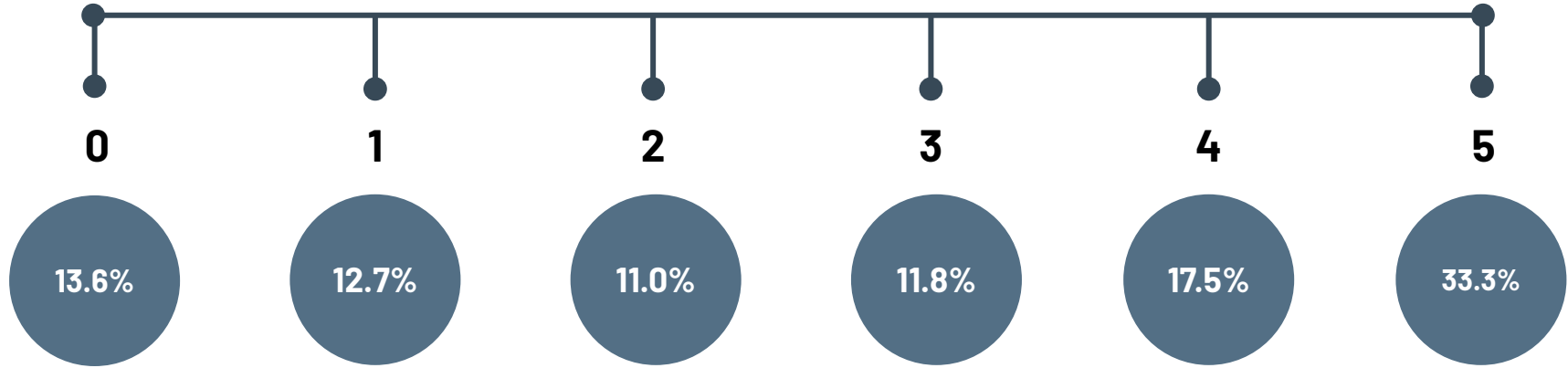
Long term potential student yield from new developments: 73-98

*Includes Old Trail, which assumes a projected build out of 1,200 units. (Maximum build out is 2,200 units.)
Ranges are shown to represent an undetermined mix of housing unit types.

I am
generally
dissatisfied

SCENARIO 3 SURVEY RESPONSES

I am
generally
satisfied

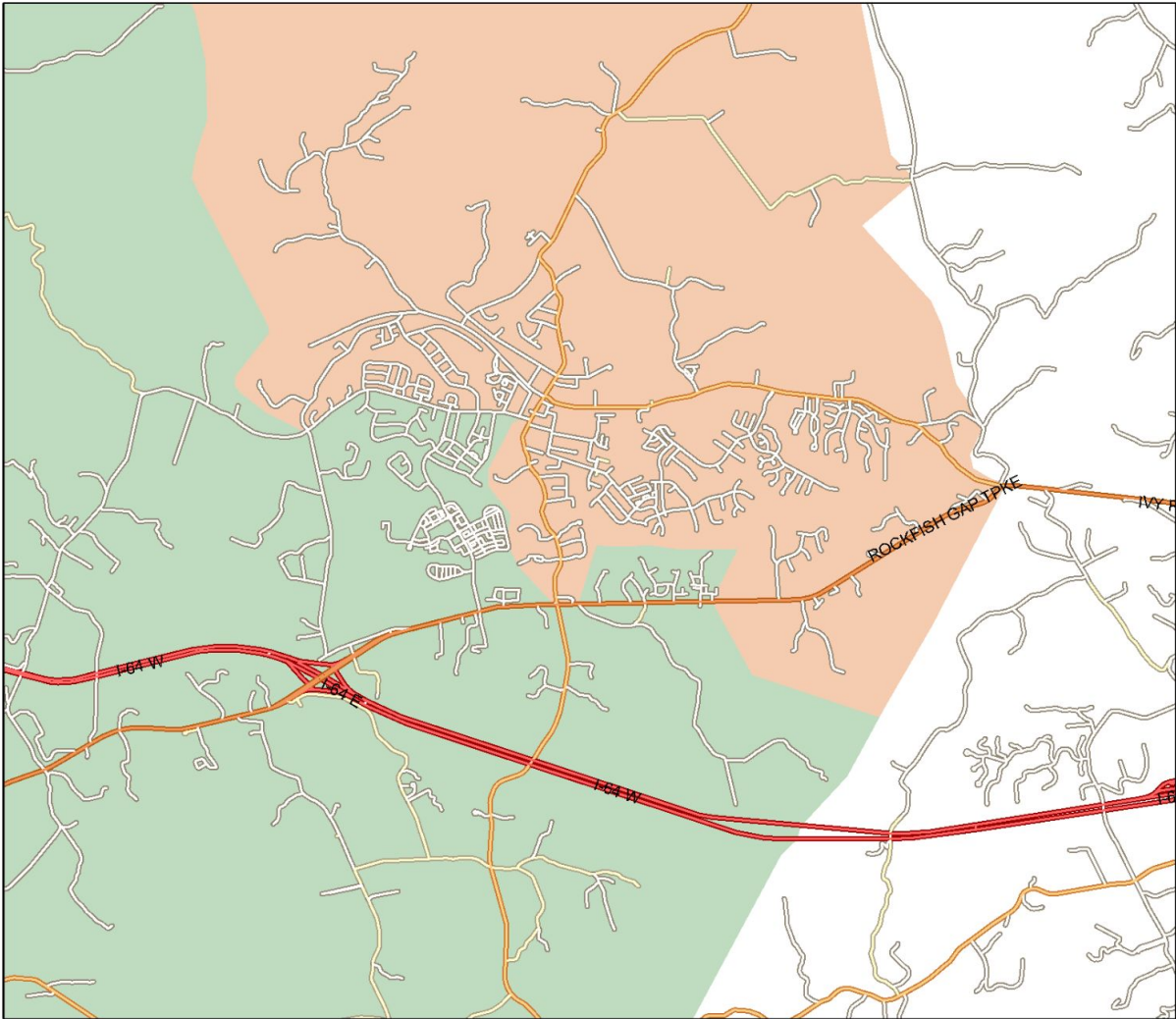


Additional Comments

- This scenario also moves some students to a school further away
- May add too many buses to Route 250

- All affected communities are non-walking neighborhoods
- Moves too many students to Crozet, and may not allow for additional growth at that school

SCENARIO 4.1



SCENARIO 4.1

East of Clover Lawn to Mechums River (19)

Grayrock (25)

Rt 240 from Jarmans Gap to Rt 250 (34)

Waylands/Bargamin (32)

Western Ridge/Foothill

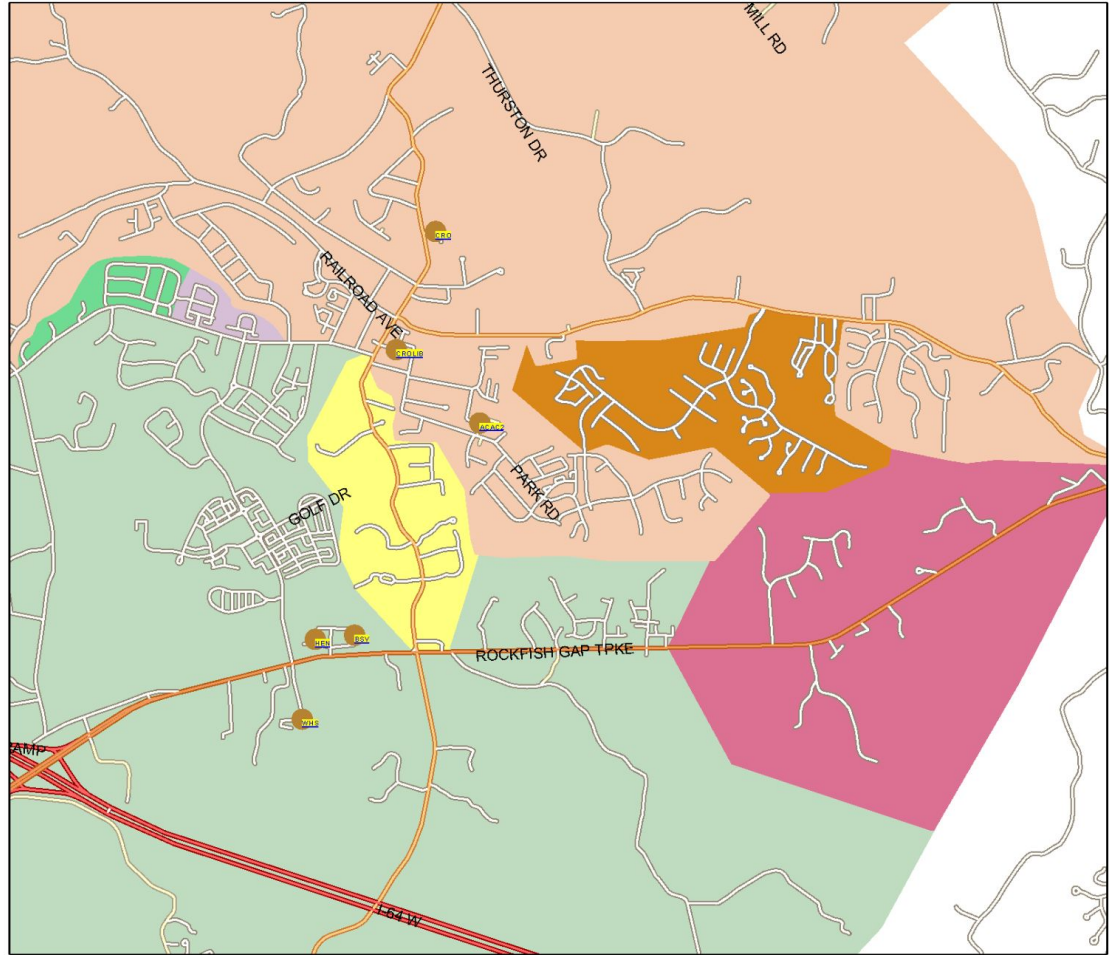
Crossing/Wickham Pond (162)

K-5 students moved: 272¹

Total K-5 Crozet Students: 582

Total K-5 Brownsville Students: 464

¹Does not include preschool. Based on current year student information only and does not reflect future years.



DEMOGRAPHIC IMPACT – SCENARIO 4.1

School		Race/Ethnicity					Econ. Disadvan.	English Learner	Difference in Enrollment
		Black	Hispanic/ Latino	White	Asian	Multirace			
Brownsville	Before	2.21%	4.42%	82.18%	5.39%	5.66%	12.02%	1.66%	-275
	After	2.95%	5.44%	83.22%	3.40%	4.76%	17.91%	1.36%	
Crozet	Before	1.56%	8.44%	84.06%	1.88%	3.75%	19.69%	2.19%	275
	After	1.33%	5.80%	82.42%	4.98%	5.31%	11.77%	2.16%	

SCENARIO 4.1 CAPACITY IMPACTS

Brownsville Elementary Capacity: 756 students

	2019-20	2021-22
Adjusted Enrollment	514	464
Cushion/(Conflict)	242	292
Percent Capacity	68%	61%

Long-term potential student yield
from new developments: 41-145*

Crozet Elementary Capacity: 668 students

	2019-20	2021-22
Adjusted Enrollment	676	582
Cushion/(Conflict)	-8	86
Percent Capacity	101%	87%

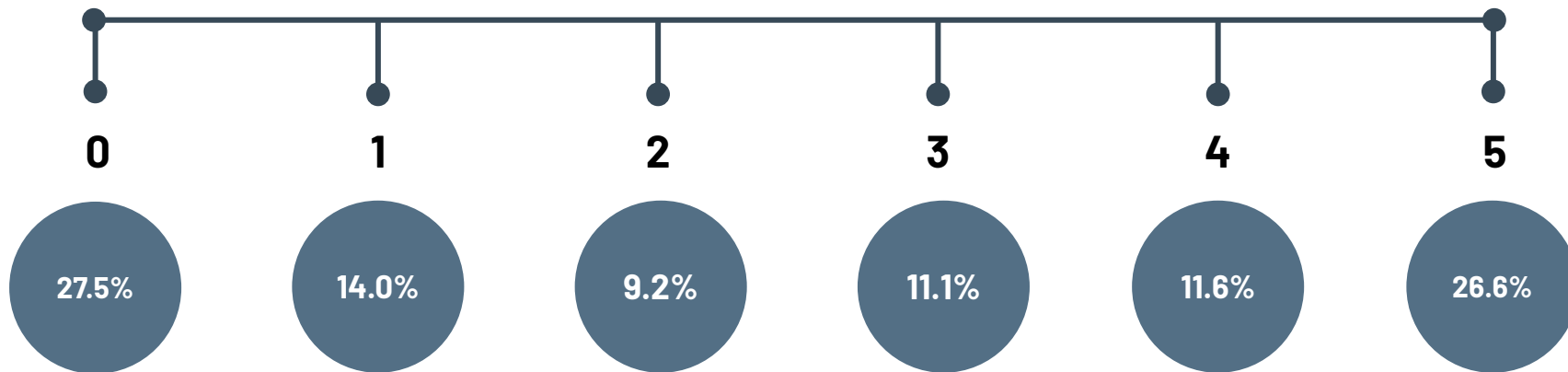
Long term potential student yield from
new developments: 75-100

*Includes Old Trail, which assumes a projected build out of 1,200 units. (Maximum build out is 2,200 units.)
Ranges are shown to represent an undetermined mix of housing unit types.

I am
generally
dissatisfied

SCENARIO 4.1 SURVEY RESPONSES

I am
generally
satisfied



Additional Comments

- Turns some neighborhoods that can walk to school in to car/bus riders
- It more evenly distributes socioeconomically disadvantaged students

- Moves too many students, and too much geographic area



COMMITTEE DISCUSSION

NEXT STEPS

- Communication to Brownsville and Crozet communities
- Present recommendation to Dr. Haas—11/29, 6:00pm