

Contents

Our Schools.....	3
School Quality Profiles	4
Feeder Patterns	4
Elementary School Districts	5
Middle School Districts.....	6
High School Districts	7
Overview of School Budgets	8
Budget Summary by Schools.....	9
Agnor-Hurt Elementary	10
Baker-Butler Elementary	12
Broadus Wood Elementary	14
Brownsville Elementary.....	16
Crozet Elementary	18
Greer Elementary	20
Hollymead Elementary	22
Meriwether Lewis Elementary	24
Mountain View Elementary	26
Murray Elementary.....	28
Red Hill Elementary	30
Scottsville Elementary.....	32
Stone-Robinson Elementary	34
Stony Point Elementary.....	36
Woodbrook Elementary.....	38
Burley Middle School	40
Henley Middle School	42
Jouett Middle School.....	44
Sutherland Middle School	46
Walton Middle School	48
Albemarle High School.....	50
Monticello High School.....	52
Western Albemarle High School	54
Lab School for Student-Centered Learning	56
Center I.....	58
Charlottesville Albemarle Technical Education Center (CATEC)	60



Multi-School Services.....	62
School Program Categories	66

Our Schools

Based on fall enrollment for the 2020-21 school year, our schools serve 13,532 students, including:

- 6,031 elementary school students in preschool through Grade 5;
- 3,183 middle school students in Grades 6-8; and
- 4,318 high school students in Grades 9-12.

Elementary Schools

- Agnor-Hurt
- Baker-Butler
- Broadus Wood
- Brownsville
- Crozet
- Mary C. Greer (Greer)
- Hollymead
- Meriwether Lewis
- Mountain View (formerly Paul H. Cale)
- Virginia L. Murray (Murray)
- Red Hill
- Scottsville
- Stone-Robinson
- Stony Point
- Woodbrook

Middle Schools

- Jackson P. Burley (Burley)
- Joseph T. Henley (Henley)
- Jack Jouett (Jouett)
- Mortimer Y. Sutherland (Sutherland)
- Leslie H. Walton (Walton)

High Schools

- Albemarle (AHS)
- Monticello (MoHS)
- Western Albemarle (WAHS)

Lab School for Student-Centered Learning

In the 2020-21 school year, Murray High School (Grades 9-12) and the Community Public Charter School (Grades 6-8) merged and began operating as one charter school for Grades 6-12. A community advisory committee is in the process of recommending a new name for the joint charter school.

School Quality Profiles

For every school division and school in the Commonwealth, the Virginia Department of Education provides a School Quality Profile containing information about student achievement, college and career readiness, program completion, school safety, teacher quality, and other topics of interest to parents and the general public.

View the School Quality Profile for Albemarle County Public Schools at:
<http://schoolquality.virginia.gov/divisions/albemarle-county-public-schools>

Feeder Patterns

Public schools in Albemarle County are divided into three “feeder patterns” according to geographical area: Northern, Southern and Western. A feeder pattern consists of the elementary, middle and high schools through which students progress.

	Northern	Southern	Western
Elementary Schools	Agnor-Hurt* Baker-Butler Broadus Wood Greer Hollymead Stony Point* Woodbrook	Mountain View* Red Hill Scottsville Stone-Robinson* Stony Point*	Brownsville Crozet Meriwether Lewis Murray
Middle Schools	Burley** Jouett Sutherland	Burley** Walton	Henley
High Schools	Albemarle	Monticello	Western Albemarle

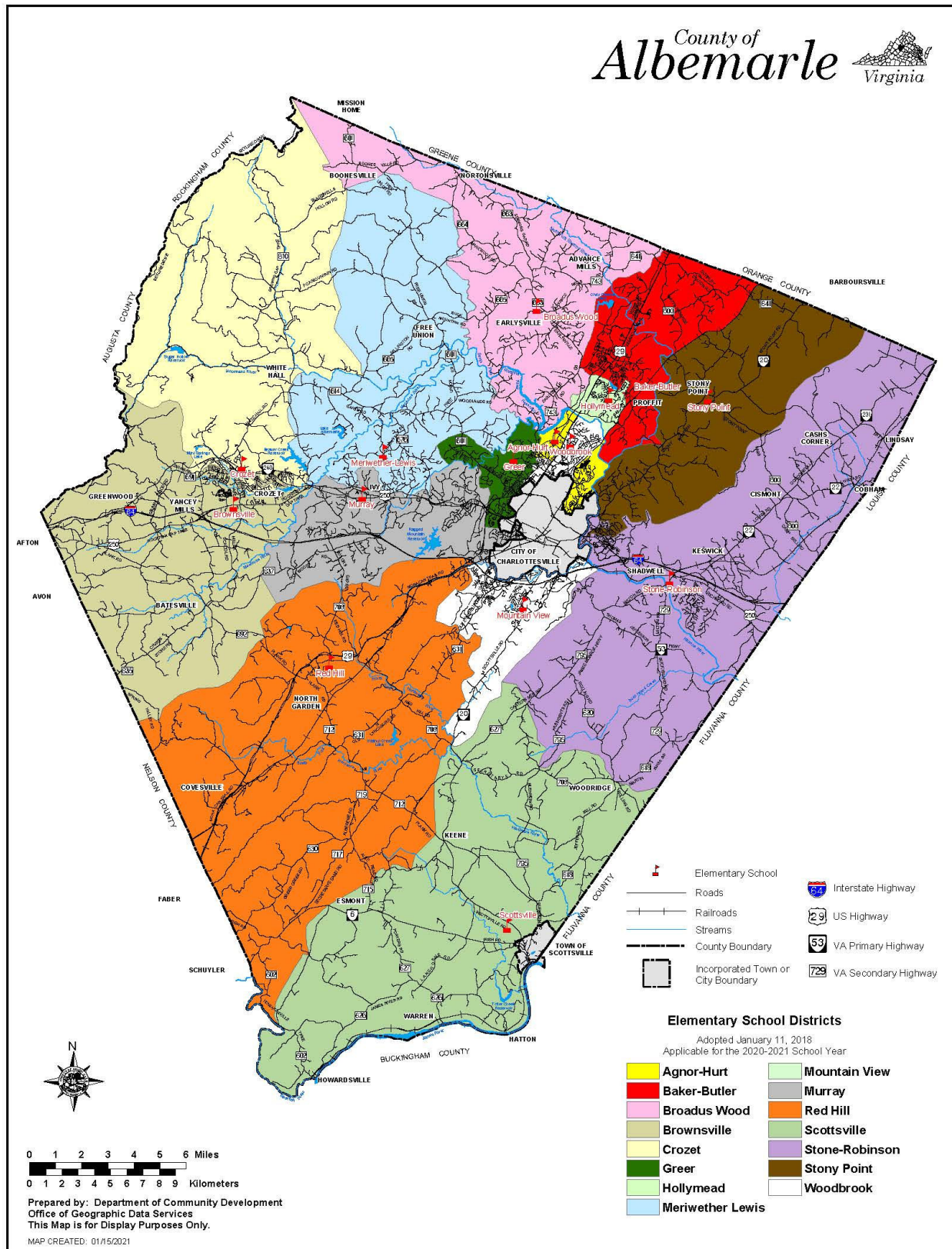
**Student body splits at the middle school level:*

- Agnor-Hurt Elementary School students will continue to either Burley or Jouett Middle School and then Albemarle High School.
- Stony Point Elementary School students will continue to either Burley Middle School and then Monticello High School, or Sutherland Middle School followed by Albemarle High School.
- Mountain View and Stone-Robinson Elementary School students will continue to either Burley or Walton Middle School and then Monticello High School.

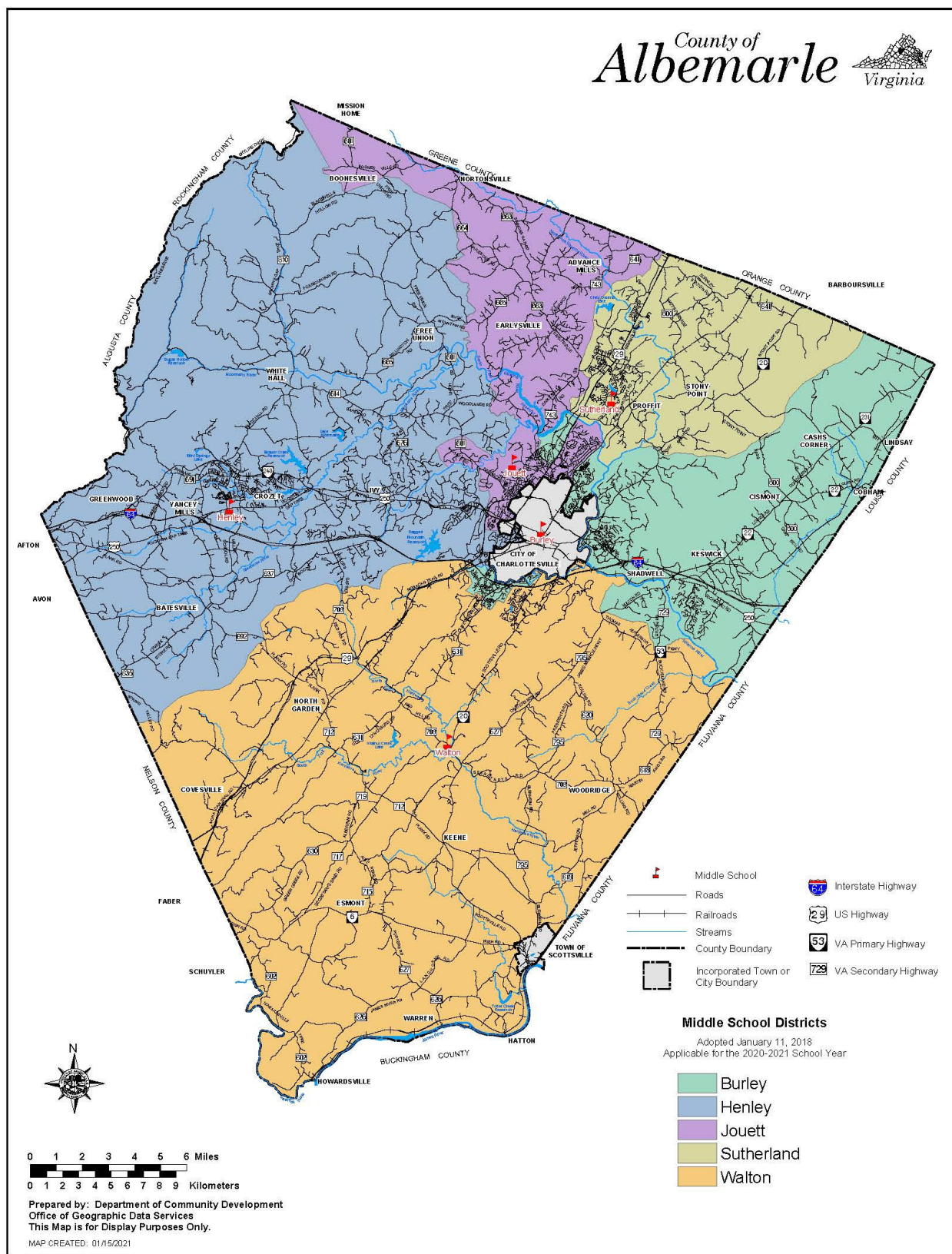
***Student body splits at the high school level:*

- Burley Middle School students will attend either Albemarle or Monticello High School.

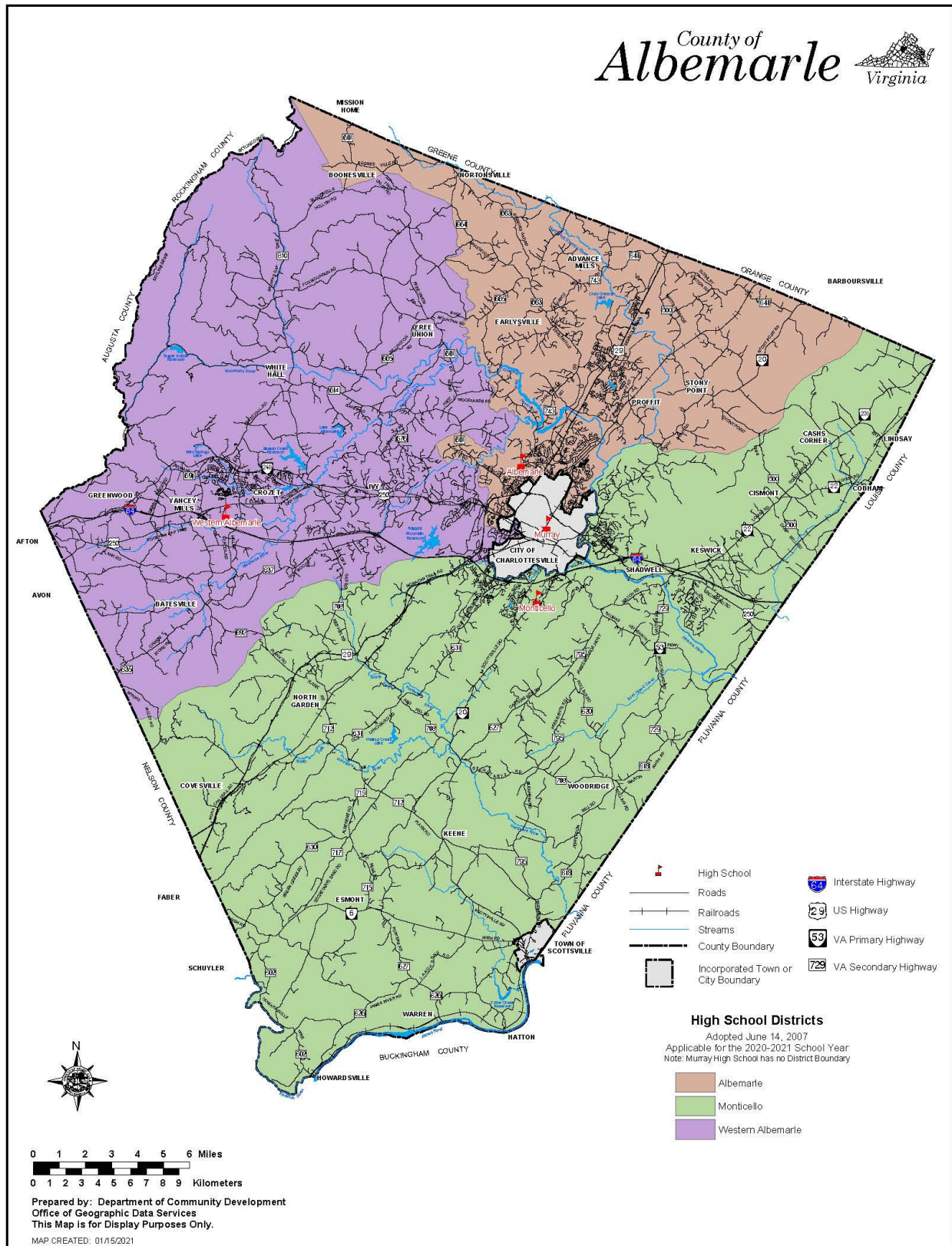
Elementary School Districts



Middle School Districts



High School Districts



Overview of School Budgets

School budgets are primarily driven by and developed based on projected student enrollment levels and special population changes. The majority of budgeted funds can be attributed to staff compensation. Schools are provided staffing resources based on the Division's staffing standards and formulas. The remaining budget is allocated for general operations and determined by various formulas and factors, including student enrollment. Section G contains detailed information about these budget factors and allocations.

FY 2021/22 Changes

Changes in School Budgets are described in Section A and include:

Non-Discretionary / Technical

- Baseline Adjustment
- Health Care Rate Increase
- Voluntary Early Retirement Incentive Program (VERIP) Increase

School and Instructional Restoration

- General Classroom & School Positions
- ESOL Teachers
- Special Education Teachers
- School Bookkeeper and Reclassification

Compensation

- Minimum Pay Rate – Phase 1
- 3.0% Salary Increase for Teachers
- 2.0% Salary Increase for Classified Employees
- Health Insurance Banding for Part-time Employees

New Proposals

- School Safety Specialists

Budget Summary by Schools

	Actual 19-20	Adopted 20-21	20-21 FTE	Draft 21-22	21-22 FTE	% of Total	Draft v. Adopted	
							Increase	% lcr
Elementary Schools								
Agnor-Hurt	\$4,753,511	\$4,972,670	67.5	\$4,749,752	63.98	3.1%	-\$222,918	-4.5%
Baker-Butler	\$6,014,717	\$6,238,681	94.3	\$6,559,777	96.51	4.2%	\$321,096	5.1%
Broadus Wood	\$2,800,640	\$2,989,969	45.5	\$3,011,892	40.05	1.9%	\$21,923	0.7%
Brownsville	\$6,614,957	\$6,929,696	99.0	7,285,969.0	100.30	4.7%	\$356,273	5.1%
Crozet	\$3,153,338	\$3,367,227	46.5	3,411,296.0	47.55	2.2%	\$44,069	1.3%
Greer	\$5,630,102	\$5,172,175	75.2	5,486,815.0	76.86	3.5%	\$314,640	6.1%
Hollymead	\$3,997,658	\$4,196,435	57.2	4,173,196.0	57.26	2.7%	-\$23,239	-0.6%
Meriwether Lewis	\$3,729,299	\$3,856,164	52.8	3,538,223.0	45.41	2.3%	-\$317,941	-8.2%
Mountain View	\$7,098,804	\$7,266,961	103.3	7,380,474.0	101.41	4.8%	\$113,513	1.6%
Murray	\$2,771,147	\$2,841,131	41.4	3,026,847.0	42.44	2.0%	\$185,716	6.5%
Red Hill	\$2,227,076	\$2,363,920	36.0	2,195,311.0	29.75	1.4%	-\$168,609	-7.1%
Scottsville	\$2,449,970	\$2,223,497	30.9	2,381,883.0	34.07	1.5%	\$158,386	7.1%
Stone-Robinson	\$4,430,218	\$4,786,551	69.4	5,098,997.0	77.12	3.3%	\$312,446	6.5%
Stony Point	\$2,554,922	\$2,640,623	37.9	2,398,142.0	31.85	1.5%	-\$242,481	-9.2%
Woodbrook	\$5,087,174	\$5,397,510	79.9	5,764,469.0	78.07	3.7%	\$366,959	6.8%
Middle Schools								
Burley	\$5,283,305	\$6,000,960	76.1	6,334,497.0	79.95	4.1%	\$333,537	5.6%
Henley	\$6,934,345	\$7,416,054	97.2	7,441,016.0	94.95	4.8%	\$24,962	0.3%
Jouett	\$5,776,771	\$6,419,749	87.7	6,763,096.0	89.84	4.4%	\$343,347	5.3%
Sutherland	\$5,119,104	\$5,242,147	69.3	5,321,634.0	66.67	3.4%	\$79,487	1.5%
Walton	\$4,154,636	\$4,306,358	58.2	4,659,560.0	61.05	3.0%	\$353,202	8.2%
High Schools								
Albemarle	\$17,534,069	\$17,635,428	228.7	17,257,111.0	212.19	11.1%	-\$378,317	-2.1%
Monticello	\$11,320,846	\$11,503,461	141.0	12,206,309.0	145.09	7.9%	\$702,848	6.1%
Western Albemarle	\$10,845,381	\$10,887,088	132.4	10,927,526.0	127.49	7.1%	\$40,438	0.4%
Center I	\$325,604	\$719,051	9.1	785,161.0	9.55	0.5%	\$66,110	9.2%
Murray High/CPCS	\$2,225,687	\$2,321,789	28.7	2,439,513.0	29.15	1.6%	\$117,724	5.1%
CATEC	\$1,770,408	\$1,787,629	0.0	1,787,629.0	0.00	1.2%	\$0	0.0%
Post High	\$0	\$0	0.0	445,664.0	7.66	0.3%	\$445,664	N/A
Center for Learning & Growth								
	\$0	\$0	0.0	387,137.0	4.34	0.3%	\$387,137	N/A
Multi-School Services	\$6,049,813	\$7,252,051	79.7	11,568,747.0	106.02	7.5%	\$4,316,696	59.5%
Total	\$140,653,501	\$146,734,975	1,944.43	\$154,787,643	1,956.58	100.0%	\$8,052,668	5.5%

AGNOR-HURT ELEMENTARY SCHOOL

Home of the Alligators

Agnor-Hurt Elementary

General School Information

- Grades Served: PK-5
- Address: 3201 Berkmar Drive, Charlottesville, VA 22901
- Phone: 434-973-5211
- Principal: Doug Granger
- 2020 Accreditation Status: Accreditation Waived
- 2019 Accreditation Status: Accredited



Doug Granger
Principal
2017-Present

Agnor-Hurt is an elementary school that serves children on the northern edge of Charlottesville. Our community spans 4.1 square miles of Albemarle County along the Rio Road/Hydraulic Road corridor between the city limits of Charlottesville and Albemarle High School. Our core purpose is to establish a community of young learners by learning through building relationships, creating relevance, and holding to high levels of rigor for each and every child every single day.

Like other elementary schools in our division, we use the Virginia Standards of Learning as our core content. We design powerful learning experiences that engage children around their interests, have high expectations for each child, and identify practices that are holding children back from learning. Our school serves children who speak 9 different languages and have family origins in 13 different countries. Just over half of our students are economically disadvantaged. Nearly one-quarter of our students identify as African-American/ Black, and another 23% identify as Hispanic/Latino. Approximately 40% of our students identify as White.

Student Enrollment: Fall Membership

	2018-2019	2019-2020	2020-2021
Total Enrollment	482	475	432
Students with Disabilities	11.6%	12.8%	10.2%
Economically Disadvantaged	53.1%	49.9%	47.0%
English Learners	19.5%	20.2%	22.5%



Facility Information

- Built in 1992
- 80,956 square feet
- 19.5-acre site

*Agnor-Hurt Elementary School is part of the **Northern Feeder Pattern**. Students continue to either Burley or Jouett Middle School and will graduate from Albemarle High School.*

AGNOR-HURT ELEMENTARY SCHOOL

Home of the Alligators

Agnor-Hurt Elementary School	Actual 19-20	Adopted 20-21	20-21 FTE	Draft 21-22	21-22 FTE	% of Total	Draft v. Adopted	
							Increase	% lcr

Expenditure Summary by Expense

Salary	\$3,274,675	\$3,422,630	67.45	\$3,256,637	63.98	68.6%	-\$165,993	-4.8%
Other Wages	\$107,368	\$73,925	0.00	\$73,591	0.00	1.5%	-\$334	-0.5%
Benefits	\$1,290,047	\$1,409,453	0.00	\$1,352,862	0.00	28.5%	-\$56,591	-4.0%
Operations	\$81,421	\$66,662	0.00	\$66,662	0.00	1.4%	\$0	0.0%
Total	\$4,753,511	\$4,972,670	67.45	\$4,749,752	63.98	100.0%	-\$222,918	-4.5%

Expenditure Summary by State Categorical Summary

Instruction	\$4,445,589	\$4,633,057	60.95	\$4,400,220	57.48	92.6%	-\$232,837	-5.0%
Admin, Attend & Health	\$59,292	\$59,729	1.00	\$61,692	1.00	1.3%	\$1,963	3.3%
Technology	\$77,337	\$78,509	1.00	\$80,772	1.00	1.7%	\$2,263	2.9%
Building Services	\$171,292	\$201,375	4.50	\$207,068	4.50	4.4%	\$5,693	2.8%
Transportation	\$0	\$0	0.00	\$0	0.00	0.00%	\$0	N/A
Total	\$4,753,511	\$4,972,670	67.45	\$4,749,752	63.98	100.0%	-\$222,918	-4.5%

Staffing Summary

<u>Admin, Attend & Health</u>		
Nurse	1.00	1.00
Admin, Attend & Health Total	1.00	1.00
<u>Building Services</u>		
Custodial	4.50	4.50
Building Services Total	4.50	4.50
<u>Instruction</u>		
Assistant Principal	1.00	1.00
Clerical	2.00	2.00
Principal	1.00	1.00
Teacher^	42.59	40.25
Teaching Assistant	14.36	13.23
Instruction Total	60.95	57.48
<u>Technology</u>		
Teacher^	0.50	0.50
Other Technical	0.50	0.50
Technology Total	1.00	1.00
Total	67.45	63.98
Staffing Allocation Total^^	57.8	55.1

^Positions included within the Teacher category are detailed in Section G – Staffing Allocations.

^^ Teaching Assistants (TAs) are allocated at a 3 TA to 1 Teacher ratio. This adjusted number is the FTE allocation to the school.

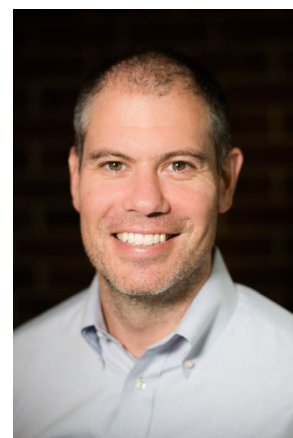
BAKER-BUTLER ELEMENTARY SCHOOL

Home of the Bears

Baker-Butler Elementary

General School Information

- Grades Served: PK-5
- Address: 2740 Proffit Road, Charlottesville, VA 22911
- Phone: 434-974-7777
- Principal: Seth Kennard
- 2020 Accreditation Status: Accreditation Waived
- 2019 Accreditation Status: Accredited



Seth Kennard
Principal
2019-Present

Baker-Butler Elementary School is a 2020 United States Department of Education Blue Ribbon School where teachers are striving to create personalized learning experiences for students through engaging, passion-based, and data-informed approaches for instruction. Staff build individual relationships with students and families, and they utilize common pre- and post-assessments to ensure that each child is appropriately challenged, supported, and empowered in their educational journey. Professional development for teachers focuses on:

1. The effective use of Professional Learning Communities to better identify and monitor student performance levels with curricular expectations;
2. Best practices for Culturally Responsive Teaching and Trauma-Responsive Care; and
3. Short and long-term Responsive Classroom goals and strategies.

Student Enrollment: Fall Membership

	2018-2019	2019-2020	2020-2021
Total Enrollment	640	684	637
Students with Disabilities	10.9%	13.3%	12.2%
Economically Disadvantaged	24.7%	25.1%	26.7%
English Learners	10.0%	10.5%	12.1%



Facility Information

- Built in 2002
- 91,576 square feet
- 55.0-acre site

*Baker-Butler Elementary School is part of the **Northern Feeder Pattern**. Students continue to Sutherland Middle School and will graduate from Albemarle High School.*

BAKER-BUTLER ELEMENTARY SCHOOL

Home of the Bears

Baker-Butler Elementary School	Actual	Adopted	20-21	Draft	21-22	% of	Draft v. Adopted	
	19-20	20-21	FTE	21-22	FTE	Total	Increase	% lcr
Expenditure Summary by Expense								
Salary	\$4,138,692	\$4,310,871	94.32	\$4,528,320	96.51	69.0%	\$217,449	5.0%
Other Wages	\$208,561	\$125,359	0.00	\$125,359	0.00	1.9%	\$0	0.0%
Benefits	\$1,580,647	\$1,703,985	0.00	\$1,807,632	0.00	27.6%	\$103,647	6.1%
Operations	\$86,817	\$98,466	0.00	\$98,466	0.00	1.5%	\$0	0.0%
Total	\$6,014,717	\$6,238,681	94.32	\$6,559,777	96.51	100.0%	\$321,096	5.1%
Expenditure Summary by State Categorical Summary								
Instruction	\$5,672,772	\$5,900,893	87.87	\$6,180,560	89.06	94.2%	\$279,667	4.7%
Admin, Attend & Health	\$55,224	\$54,232	1.00	\$52,706	1.00	0.8%	-\$1,526	-2.8%
Technology	\$93,170	\$100,245	1.20	\$101,238	1.20	1.5%	\$993	1.0%
Building Services	\$193,551	\$183,311	4.25	\$225,273	5.25	3.4%	\$41,962	22.9%
Total	\$6,014,717	\$6,238,681	94.32	\$6,559,777	96.51	100.0%	\$321,096	5.1%
Staffing Summary								
Admin, Attend & Health								
Nurse			1.00		1.00			
Admin, Attend & Health Total			1.00		1.00			
Building Services								
Custodial			4.25		5.25			
Building Services Total			4.25		5.25			
Instruction								
Assistant Principal			1.00		1.00			
Clerical			3.17		3.50			
Principal			1.00		1.00			
Teacher^			57.87		60.17			
Teaching Assistant			24.83		23.39			
Instruction Total			87.87		89.06			
Technology								
Teacher^			0.60		0.60			
Other Technical			0.60		0.60			
Technology Total			1.20		1.20			
Total			94.32		96.51			
Staffing Allocation Total^^			77.7		80.8			

^Positions included within the Teacher category are detailed in Section G – Staffing Allocations.

^^ Teaching Assistants (TAs) are allocated at a 3 TA to 1 Teacher ratio. This adjusted number is the FTE allocation to the school.

BROADUS WOOD ELEMENTARY SCHOOL

Home of the Bobcats

Broadus Wood Elementary

General School Information

- Grades Served: PK-5
- Address: 185 Buck Mountain Road, Earlysville, VA 22936
- Phone: 434-973-3865
- Principal: Amy Morris
- 2020 Accreditation Status: Accreditation Waived
- 2019 Accreditation Status: Accredited

Broadus Wood Elementary School is a community of learners and learning through relationships, relevance, and rigor, one student at a time. We are committed to creating a culture of high expectations for every student and removing practices that perpetuate the achievement gap.



Amy Morris
Principal
2016-Present

Student Enrollment: Fall Membership

	2018-2019	2019-2020	2020-2021
Total Enrollment	280	287	252
Students with Disabilities	13.6%	14.6%	11.5%
Economically Disadvantaged	17.9%	14.3%	16.7%
English Learners	1.8%	1.0%	1.2%



Facility Information

- Built in 1936
- 49,852 square feet
- 11.7-acre site

*Broadus Wood Elementary School is part of the **Northern Feeder Pattern**. Students continue to Jouett Middle School and will graduate from Albemarle High School.*

BROADUS WOOD ELEMENTARY SCHOOL

Home of the Bobcats

Broadus Wood Elementary School	Actual 19-20	Adopted 20-21	20-21 FTE	Draft 21-22	21-22 FTE	% of Total	Draft v. Adopted	
							Increase	% lcr
Expenditure Summary by Expense								
Salary	\$1,932,944	\$2,027,563	45.45	\$2,044,399	40.05	67.9%	\$16,836	0.8%
Other Wages	\$43,241	\$44,503	0.00	\$44,503	0.00	1.5%	\$0	0.0%
Benefits	\$778,171	\$849,174	0.00	\$854,261	0.00	28.4%	\$5,087	0.6%
Operations	\$46,283	\$68,729	0.00	\$68,729	0.00	2.3%	\$0	0.0%
Total	\$2,800,640	\$2,989,969	45.45	\$3,011,892	40.05	100.0%	\$21,923	0.7%

Expenditure Summary by State Categorical Summary

Instruction	\$2,597,371	\$2,751,193	40.75	\$2,799,643	36.35	93.0%	\$48,450	1.8%
Admin, Attend & Health	\$52,410	\$53,011	1.00	\$54,043	1.00	1.8%	\$1,032	1.9%
Technology	\$52,450	\$52,202	0.70	\$53,892	0.70	1.8%	\$1,690	3.2%
Building Services	\$98,409	\$133,563	3.00	\$104,314	2.00	3.5%	-\$29,249	-21.9%
Total	\$2,800,640	\$2,989,969	45.45	\$3,011,892	40.05	100.0%	\$21,923	0.7%

Staffing Summary

<u>Admin, Attend & Health</u>		
Nurse	1.00	1.00
Admin, Attend & Health Total	1.00	1.00
<u>Building Services</u>		
Custodial	3.00	2.00
Building Services Total	3.00	2.00
<u>Instruction</u>		
Clerical	2.00	2.00
Principal	1.00	1.00
Teacher^	24.62	27.28
Teaching Assistant	13.13	6.07
Instruction Total	40.75	36.35
<u>Technology</u>		
Teacher^	0.50	0.50
Other Technical	0.20	0.20
Technology Total	0.70	0.70
Total	45.45	40.05
Staffing Allocation Total^^	36.7	36.0

^Positions included within the Teacher category are detailed in Section G – Staffing Allocations.

^^ Teaching Assistants (TAs) are allocated at a 3 TA to 1 Teacher ratio. This adjusted number is the FTE allocation to the school.

BROWNSVILLE ELEMENTARY SCHOOL

Home of the Bees

Brownsville Elementary

General School Information

- Grades Served: PK-5
- Address: 5870 Rockfish Gap Turnpike, Crozet, VA 22932
- Phone: 434-823-4658
- Principal: Jason Crutchfield
- 2020 Accreditation Status: Accreditation Waived
- 2019 Accreditation Status: Accredited

Brownsville Elementary opened in 1966 to serve the public education needs of the Greenwood/Crozet community. The school follows Albemarle County Public School's objectives of the division's strategic plan and its mission for equity. Brownsville students are Safe and Caring Learners. Brownsville is a Responsive Classroom school providing engaging instruction that can be observed through continuous improvement, strong community partnerships and student leadership opportunities.



Jason Crutchfield
Principal
2016-Present

Student Enrollment: Fall Membership

	2018-2019	2019-2020	2020-2021
Total Enrollment	817	861	729
Students with Disabilities	8.4%	9.2%	8.8%
Economically Disadvantaged	10.5%	10.8%	13.7%
English Learners	1.1%	0.9%	1.1%



Facility Information

- Built in 1966
- 90,550 square feet
- 19.5-acre site

*Brownsville Elementary School is part of the **Western Feeder Pattern**. Students continue to Henley Middle School and will graduate from Western Albemarle High School.*

BROWNSVILLE ELEMENTARY SCHOOL

Home of the Bees

Brownsville Elementary School	Actual 19-20	Adopted 20-21	20-21 FTE	Draft 21-22	21-22 FTE	% of Total	Draft v. Adopted	
							Increase	% lcr
Expenditure Summary by Expense								
Salary	\$4,486,996	\$4,628,653	98.98	\$4,843,895	100.30	66.5%	\$215,242	4.7%
Other Wages	\$186,979	\$147,349	0.00	\$147,349	0.00	2.0%	\$0	0.0%
Benefits	\$1,840,857	\$1,985,181	0.00	\$2,126,212	0.00	29.2%	\$141,031	7.1%
Operations	\$100,126	\$168,513	0.00	\$168,513	0.00	2.3%	\$0	0.0%
Total	\$6,614,957	\$6,929,696	98.98	\$7,285,969	100.30	100.0%	\$356,273	5.1%
Expenditure Summary by State Categorical Summary								
Instruction	\$6,222,667	\$6,515,354	91.38	\$6,842,615	91.95	93.9%	\$327,261	5.0%
Admin, Attend & Health	\$58,956	\$60,449	1.00	\$62,454	1.00	0.9%	\$2,005	3.3%
Technology	\$137,662	\$142,100	1.60	\$148,074	1.60	2.0%	\$5,974	4.2%
Building Services	\$195,671	\$211,793	5.00	\$232,826	5.75	3.2%	\$21,033	9.9%
Total	\$6,614,957	\$6,929,696	98.98	\$7,285,969	100.30	100.0%	\$356,273	5.1%
Staffing Summary								
<u>Admin, Attend & Health</u>								
Nurse			1.00		1.00			
Admin, Attend & Health Total			1.00		1.00			
<u>Building Services</u>								
Custodial			5.00		5.75			
Building Services Total			5.00		5.75			
<u>Instruction</u>								
Assistant Principal			1.00		1.00			
Clerical			3.50		3.50			
Principal			1.00		1.00			
Teacher^			62.03		64.13			
Teaching Assistant			23.85		22.32			
Instruction Total			91.38		91.95			
<u>Technology</u>								
Teacher^			1.00		1.00			
Other Technical			0.60		0.60			
Technology Total			1.60		1.60			
Total			98.98		100.30			
Staffing Allocation Total^^			83.0		85.3			

^Positions included within the Teacher category are detailed in Section G – Staffing Allocations.

^^ Teaching Assistants (TAs) are allocated at a 3 TA to 1 Teacher ratio. This adjusted number is the FTE allocation to the school.

CROZET ELEMENTARY SCHOOL

Home of the Eagles

Crozet Elementary

General School Information

- Grades Served: K-5
- Address: 1407 Crozet Avenue, Crozet, VA 22932
- Phone: 434-823-4800
- Principal: Gwedette Crummie
- 2020 Accreditation Status: Accreditation Waived
- 2019 Accreditation Status: Accredited

Crozet Elementary holds these truths to be self-evident: that all students are created equal. Our objective is to establish a community of learners through relationships, relevance, and rigor, every day, every student. We optimize our local community resources and business partnerships in Crozet/White Hall and surrounding areas of Albemarle County to provide our students with sustainable, innovative and enriching learning opportunities in order to reach our objective.

With this spirit and belief, Crozet Elementary makes every effort to know each student; nurture their mental and physical wellness, and maximize their potential and talents through a Responsive Classroom approach, Culturally Responsive Teaching, project/problem/passion-based learning, and environmental stewardship.



Gwedette Crummie
Principal
2010-Present

Student Enrollment: Fall Membership

	2018-2019	2019-2020	2020-2021
Total Enrollment	363	342	328
Students with Disabilities	10.2%	8.8%	8.8%
Economically Disadvantaged	25.9%	23.1%	24.4%
English Learners	2.8%	3.2%	3.4%



Facility Information

- Built in 1990
- 54,142 square feet
- 21.2-acre site

*Crozet Elementary School is part of the **Western Feeder Pattern**. Students continue to Henley Middle School and will graduate from Western Albemarle High School.*

CROZET ELEMENTARY SCHOOL

Home of the Eagles

Crozet Elementary School	Actual	Adopted	20-21	Draft	21-22	% of	Draft v. Adopted	
	19-20	20-21	FTE		FTE	Total	Increase	% lcr
Expenditure Summary by Expense								
Salary	\$2,223,988	\$2,325,297	46.48	\$2,354,841	47.55	69.0%	\$29,544	1.3%
Other Wages	\$61,493	\$71,832	0.00	\$71,832	0.00	2.1%	\$0	0.0%
Benefits	\$814,012	\$892,387	0.00	\$906,912	0.00	26.6%	\$14,525	1.6%
Operations	\$53,845	\$77,711	0.00	\$77,711	0.00	2.3%	\$0	0.0%
Total	\$3,153,338	\$3,367,227	46.48	\$3,411,296	47.55	100.0%	\$44,069	1.3%
Expenditure Summary by State Categorical Summary								
Instruction	\$2,867,829	\$3,086,619	41.08	\$3,134,921	42.15	91.9%	\$48,302	1.6%
Admin, Attend & Health	\$59,285	\$62,689	1.00	\$50,528	1.00	1.5%	-\$12,161	-19.4%
Technology	\$77,861	\$79,629	0.90	\$83,197	0.90	2.4%	\$3,568	4.5%
Building Services	\$148,363	\$138,290	3.50	\$142,650	3.50	4.2%	\$4,360	3.2%
Total	\$3,153,338	\$3,367,227	46.48	\$3,411,296	47.55	100.0%	\$44,069	1.3%
Staffing Summary								
<u>Admin, Attend & Health</u>								
Nurse			1.00		1.00			
Admin, Attend & Health Total			1.00		1.00			
<u>Building Services</u>								
Custodial			3.50		3.50			
Building Services Total			3.50		3.50			
<u>Instruction</u>								
Assistant Principal			1.00		1.00			
Clerical			2.00		2.00			
Principal			1.00		1.00			
Teacher^			29.13		28.30			
Teaching Assistant			7.95		9.85			
Instruction Total			41.08		42.15			
<u>Technology</u>								
Teacher^			0.50		0.50			
Other Technical			0.40		0.40			
Technology Total			0.90		0.90			
Total			46.48		47.55			
Staffing Allocation Total^^			41.2		41.0			

^Positions included within the Teacher category are detailed in Section G – Staffing Allocations.

^^ Teaching Assistants (TAs) are allocated at a 3 TA to 1 Teacher ratio. This adjusted number is the FTE allocation to the school.

GREER ELEMENTARY SCHOOL

Home of the Geckos

Greer Elementary

General School Information

- Grades Served: PK-5
- Address: 190 Lambs Lane, Charlottesville, VA 22901
- Phone: 434-973-8371
- Principal: Stephen Saunders
- 2020 Accreditation Status: Accreditation Waived
- 2019 Accreditation Status: Accredited with Conditions

At Greer, we will change lives and our community. We will reach and challenge every student, every day. Just as we are leaders in Responsive Classroom, our goal is to become leaders in eliminating achievement gaps and providing equitable outcomes and opportunities for all students.



Stephen Saunders
Principal
2019-Present

Student Enrollment: Fall Membership

	2018-2019	2019-2020	2020-2021
Total Enrollment	577	522	469
Students with Disabilities	12.1%	15.5%	13.6%
Economically Disadvantaged	70.9%	70.7%	63.3%
English Learners	32.8%	33.7%	34.5%



Facility Information

- Built in 1974
- 99,258 square feet
- 15.0-acre site

*Greer Elementary School is part of the **Northern Feeder Pattern**. Students continue to Jouett Middle School and will graduate from Albemarle High School.*

GREER ELEMENTARY SCHOOL

Home of the Geckos

Greer Elementary School	Actual 19-20	Adopted 20-21	20-21 FTE	Draft 21-22	21-22 FTE	% of Total	Draft v. Adopted	
							Increase	% lcr
Expenditure Summary by Expense								
Salary	\$3,960,074	\$3,629,961	75.24	\$3,801,061	76.86	69.3%	\$171,100	4.7%
Other Wages	\$108,043	\$78,963	0.00	\$78,633	0.00	1.4%	-\$330	-0.4%
Benefits	\$1,493,722	\$1,365,733	0.00	\$1,509,603	0.00	27.5%	\$143,870	10.5%
Operations	\$68,264	\$97,518	0.00	\$97,518	0.00	1.8%	\$0	0.0%
Total	\$5,630,102	\$5,172,175	75.24	\$5,486,815	76.86	100.0%	\$314,640	6.1%
Expenditure Summary by State Categorical Summary								
Instruction	\$5,298,867	\$4,831,326	68.04	\$5,137,606	70.01	93.6%	\$306,280	6.3%
Admin, Attend & Health	\$46,785	\$45,791	1.00	\$46,677	1.00	0.9%	\$886	1.9%
Technology	\$83,014	\$88,064	1.20	\$98,941	1.10	1.8%	\$10,877	12.4%
Building Services	\$201,436	\$206,994	5.00	\$203,591	4.75	3.7%	-\$3,403	-1.6%
Total	\$5,630,102	\$5,172,175	75.24	\$5,486,815	76.86	100.0%	\$314,640	6.1%
Staffing Summary								
Admin, Attend & Health								
Nurse			1.00		1.00			
Admin, Attend & Health Total			1.00		1.00			
Building Services								
Custodial			5.00		4.75			
Building Services Total			5.00		4.75			
Instruction								
Assistant Principal			2.00		1.00			
Clerical			2.50		2.50			
Principal			1.00		1.00			
Teacher^			46.94		49.11			
Teaching Assistant			15.60		16.40			
Instruction Total			68.04		70.01			
Technology								
Teacher^			0.70		0.50			
Other Technical			0.50		0.60			
Technology Total			1.20		1.10			
Total			75.24		76.86			
Staffing Allocation Total^^			64.8		65.9			

^Positions included within the Teacher category are detailed in Section G – Staffing Allocations.

^^ Teaching Assistants (TAs) are allocated at a 3 TA to 1 Teacher ratio. This adjusted number is the FTE allocation to the school.

HOLLYMEAD ELEMENTARY SCHOOL

Home of the Hornets

Hollymead Elementary

General School Information

- Grades Served: PK-5
- Address: 2775 Powell Creek Drive Charlottesville, VA 22911
- Phone: 434-973-8301
- Principal: Craig Dommer
- 2020 Accreditation Status: Accreditation Waived
- 2019 Accreditation Status: Accredited

Hollymead is a PK-5 elementary school that utilizes student curiosity and an arts integrated curriculum to improve academic and social outcomes for all students. Hollymead, along with its strong and diverse community, creates and expands partnerships, including those with local businesses and our families of military personnel.



Craig Dommer
Principal
2018-Present

Student Enrollment: Fall Membership

	2018-2019	2019-2020	2020-2021
Total Enrollment	440	429	349
Students with Disabilities	11.6%	14.2%	15.2%
Economically Disadvantaged	11.4%	13.1%	13.2%
English Learners	8.9%	9.3%	9.7%



Facility Information

- Built in 1972
- 66,437 square feet
- 20.1-acre site

*Hollymead Elementary School is part of the **Northern Feeder Pattern**. Students continue to Sutherland Middle School and will graduate from Albemarle High School.*

HOLLYMEAD ELEMENTARY SCHOOL

Home of the Hornets

Hollymead Elementary School	Actual 19-20	Adopted 20-21	20-21 FTE	Draft 21-22	21-22 FTE	% of Total	Draft v. Adopted	
							Increase	% lcr
Expenditure Summary by Expense								
Salary	\$2,787,968	\$2,871,286	57.23	\$2,863,075	57.26	68.6%	-\$8,211	-0.3%
Other Wages	\$82,139	\$64,461	0.00	\$64,461	0.00	1.5%	\$0	0.0%
Benefits	\$1,078,986	\$1,165,453	0.00	\$1,150,425	0.00	27.6%	-\$15,028	-1.3%
Operations	\$48,564	\$95,235	0.00	\$95,235	0.00	2.3%	\$0	0.0%
Total	\$3,997,658	\$4,196,435	57.23	\$4,173,196	57.26	100.0%	-\$23,239	-0.6%
Expenditure Summary by State Categorical Summary								
Instruction	\$3,616,096	\$3,865,651	51.73	\$3,871,099	51.36	92.8%	\$5,448	0.1%
Admin, Attend & Health	\$92,511	\$94,549	1.00	\$42,897	1.00	1.0%	-\$51,652	-54.6%
Technology	\$36,647	\$36,353	0.50	\$63,366	0.90	1.5%	\$27,013	74.3%
Building Services	\$252,404	\$199,882	4.00	\$195,834	4.00	4.7%	-\$4,048	-2.0%
Total	\$3,997,658	\$4,196,435	57.23	\$4,173,196	57.26	100.0%	-\$23,239	-0.6%
Staffing Summary								
<u>Admin, Attend & Health</u>								
Nurse			0.83		1.00			
Other Management			0.17		0.00			
Admin, Attend & Health Total			1.00		1.00			
<u>Building Services</u>								
Custodial			4.00		4.00			
Building Services Total			4.00		4.00			
<u>Instruction</u>								
Assistant Principal			1.00		1.00			
Clerical			2.00		2.00			
Principal			1.00		1.00			
Teacher^			35.86		34.88			
Teaching Assistant			11.87		12.48			
Instruction Total			51.73		51.36			
<u>Technology</u>								
Teacher^			0.50		0.50			
Other Technical			0.00		0.40			
Technology Total			0.50		0.90			
Total			57.23		57.26			
Staffing Allocation Total^^			49.3		48.9			

^Positions included within the Teacher category are detailed in Section G – Staffing Allocations.

^^ Teaching Assistants (TAs) are allocated at a 3 TA to 1 Teacher ratio. This adjusted number is the FTE allocation to the school.

MERIWETHER LEWIS ELEMENTARY SCHOOL

Home of the Bluebirds

Meriwether Lewis Elementary

General School Information

- Grades Served: K-5
- Address: 1610 Owensville Road, Charlottesville, VA 22901
- Phone: 434-293-9304
- Principal: Michael Irani
- 2020 Accreditation Status: Accreditation Waived
- 2019 Accreditation Status: Accredited

Explore. Play. Learn.

Meriwether Lewis Elementary School is a community of learners who collaborate to ensure that all children own their own learning. We believe all children have gifts and it is our responsibility to develop those. To accomplish this, we work to balance the socio-emotional, physical, and academic needs of every child. More specifically, the Meriwether Lewis staff has dedicated itself to the study of Culturally Responsive Teaching, Responsive Classroom, P-Based learning, and differentiated literacy and math instruction. At the heart of the work is the ongoing development of the PLC model where teacher teams engage in the Plan-Do-Study-Act cycle on a regular basis to respond to student assessments and adjust instruction as needed.



Michael Irani
Principal
2014-Present

Student Enrollment: Fall Membership

	2018-2019	2019-2020	2020-2021
Total Enrollment	405	404	323
Students with Disabilities	8.9%	9.9%	8.7%
Economically Disadvantaged	8.4%	10.4%	9.6%
English Learners	1.0%	1.5%	1.2%



Facility Information

- Built in 1988
- 56,450 square feet
- 17.7-acre site

*Meriwether Lewis Elementary School is part of the **Western Feeder Pattern**. Students continue to Henley Middle School and will graduate from Western Albemarle High School.*

MERIWETHER LEWIS ELEMENTARY SCHOOL

Home of the Bluebirds

Meriwether Lewis Elementary School	Actual 19-20	Adopted 20-21	20-21 FTE	Draft 21-22	21-22 FTE	% of Total	Draft v. Adopted	
							Increase	% lcr
Expenditure Summary by Expense								
Salary	\$2,564,288	\$2,570,803	52.75	\$2,343,688	45.41	66.2%	-\$227,115	-8.8%
Other Wages	\$76,475	\$75,724	0.00	\$75,724	0.00	2.1%	\$0	0.0%
Benefits	\$1,030,475	\$1,097,576	0.00	\$1,006,750	0.00	28.5%	-\$90,826	-8.3%
Operations	\$58,062	\$112,061	0.00	\$112,061	0.00	3.2%	\$0	0.0%
Total	\$3,729,299	\$3,856,164	52.75	\$3,538,223	45.41	100.0%	-\$317,941	-8.2%
Expenditure Summary by State Categorical Summary								
Instruction	\$3,474,138	\$3,595,159	47.75	\$3,274,549	40.66	92.5%	-\$320,610	-8.9%
Admin, Attend & Health	\$49,531	\$47,865	1.00	\$51,820	1.00	1.5%	\$3,955	8.3%
Technology	\$62,306	\$60,344	0.75	\$62,162	0.75	1.8%	\$1,818	3.0%
Building Services	\$143,324	\$152,796	3.25	\$149,692	3.00	4.2%	-\$3,104	-2.0%
Total	\$3,729,299	\$3,856,164	52.75	\$3,538,223	45.41	100.0%	-\$317,941	-8.2%
Staffing Summary								
<u>Admin, Attend & Health</u>								
Nurse			1.00		1.00			
Admin, Attend & Health Total			1.00		1.00			
<u>Building Services</u>								
Custodial			3.25		3.00			
Building Services Total			3.25		3.00			
<u>Instruction</u>								
Assistant Principal			1.00		1.00			
Clerical			2.00		2.00			
Principal			1.00		1.00			
Teacher^			32.00		30.36			
Teaching Assistant			11.75		6.30			
Instruction Total			47.75		40.66			
<u>Technology</u>								
Teacher^			0.50		0.50			
Other Technical			0.25		0.25			
Technology Total			0.75		0.75			
Total			52.75		45.41			
Staffing Allocation Total^^			44.9		41.2			

^Positions included within the Teacher category are detailed in Section G – Staffing Allocations.

^^ Teaching Assistants (TAs) are allocated at a 3 TA to 1 Teacher ratio. This adjusted number is the FTE allocation to the school.

MOUNTAIN VIEW ELEMENTARY SCHOOL

Home of the Colts

Mountain View Elementary

General School Information

- Grades Served: PK-5
- Address: 1757 Avon Street Extended, Charlottesville, VA 22902
- Phone: 434-293-7455
- Principal: Cyndi Wells
- 2020 Accreditation Status: Accreditation Waived
- 2019 Accreditation Status: Accredited



Cyndi Wells
Principal
2019-Present

Mountain View Elementary (formerly Cale Elementary) is a PK-5 school where teachers work together to improve academic, social and emotional, and personal outcomes for all students. We are a school deeply committed to equity and “doing whatever it takes” to connect with our students and families so they are successful. We continue to rework our mission, vision, and value statements in support of our goals of equity and educational excellence for all students through learning partnerships that build on our collective strengths. We work to bring the ACPS mission to life on a daily basis for our students and families.

Student Enrollment: Fall Membership

	2018-2019	2019-2020	2020-2021
Total Enrollment	683	770	694
Students with Disabilities	14.8%	15.3%	12.5%
Economically Disadvantaged	43.8%	41.2%	41.5%
English Learners	24.2%	20.3%	19.6%



Facility Information

- Built in 1990
- 92,307 square feet
- 16.1-acre site

*Mountain View Elementary School is part of the **Southern Feeder Pattern**. Students continue to Burley or Walton Middle School and will graduate from Monticello High School.*

MOUNTAIN VIEW ELEMENTARY SCHOOL

Home of the Colts

Mountain View Elementary School	Actual 19-20	Adopted 20-21	20-21 FTE	Draft 21-22	21-22 FTE	% of Total	Draft v. Adopted	
							Increase	% lcr
Expenditure Summary by Expense								
Salary	\$4,909,910	\$4,989,076	103.31	\$5,010,119	101.41	67.9%	\$21,043	0.4%
Other Wages	\$156,568	\$124,675	0.00	\$124,675	0.00	1.7%	\$0	0.0%
Benefits	\$1,929,086	\$2,061,404	0.00	\$2,153,874	0.00	29.2%	\$92,470	4.5%
Operations	\$103,241	\$91,806	0.00	\$91,806	0.00	1.2%	\$0	0.0%
Total	\$7,098,804	\$7,266,961	103.31	\$7,380,474	101.41	100.0%	\$113,513	1.6%
Expenditure Summary by State Categorical Summary								
Instruction	\$6,749,641	\$6,885,706	96.11	\$7,008,198	94.75	95.0%	\$122,492	1.8%
Admin, Attend & Health	\$58,919	\$58,684	1.00	\$60,965	1.00	0.8%	\$2,281	3.9%
Technology	\$93,997	\$92,585	1.20	\$101,134	1.20	1.4%	\$8,549	9.2%
Building Services	\$196,247	\$229,986	5.00	\$210,177	4.46	2.8%	-\$19,809	-8.6%
Total	\$7,098,804	\$7,266,961	103.31	\$7,380,474	101.41	100.0%	\$113,513	1.6%
Staffing Summary								
<u>Admin, Attend & Health</u>								
Nurse			1.00		1.00			
Admin, Attend & Health Total			1.00		1.00			
<u>Building Services</u>								
Custodial			5.00		4.46			
Building Services Total			5.00		4.46			
<u>Instruction</u>								
Assistant Principal			1.00		1.00			
Clerical			3.50		3.50			
Principal			1.00		1.00			
Teacher^			68.11		68.49			
Teaching Assistant			22.50		20.76			
Instruction Total			96.11		94.75			
<u>Technology</u>								
Teacher^			0.60		0.60			
Other Technical			0.60		0.60			
Technology Total			1.20		1.20			
Total			103.31		101.41			
Staffing Allocation Total^^			88.2		87.5			

^Positions included within the Teacher category are detailed in Section G – Staffing Allocations.

^^ Teaching Assistants (TAs) are allocated at a 3 TA to 1 Teacher ratio. This adjusted number is the FTE allocation to the school.

MURRAY ELEMENTARY SCHOOL

Home of the Mustangs

Murray Elementary

General School Information

- Grades Served: PK-5
- Address: 3251 Morgantown Road, Charlottesville, VA 22903
- Phone: 434-977-4599
- Principal: Alison Dwier-Selden
- 2020 Accreditation Status: Accreditation Waived
- 2019 Accreditation Status: Accredited

Murray Elementary School, a PK-5 elementary school, works daily to develop high levels of both cognitive growth and social-emotional well-being of the students in our learning community. We collectively own student growth and are committed to developing a growth mindset in children. We develop strong relationships with each child as well as teach children how to develop positive relationships with others.



Alison Dwier-Selden
Principal
2019-Present

Student Enrollment: Fall Membership

	2018-2019	2019-2020	2020-2021
Total Enrollment	270	256	235
Students with Disabilities	13.0%	9.4%	11.5%
Economically Disadvantaged	7.4%	7.0%	8.1%
English Learners	3.3%	2.3%	2.6%



Facility Information

- Built in 1960
- 42,057 square feet
- 20.9-acre site

*Murray Elementary School is part of the **Western Feeder Pattern**. Students continue to Henley Middle School and will graduate from Western Albemarle High School.*

MURRAY ELEMENTARY SCHOOL

Home of the Mustangs

Murray Elementary School	Actual 19-20	Adopted 20-21	20-21 FTE	Draft 21-22	21-22 FTE	% of Total	Draft v. Adopted	
							Increase	% lcr
Expenditure Summary by Expense								
Salary	\$1,933,003	\$1,949,434	41.35	\$2,045,707	42.44	67.6%	\$96,273	4.9%
Other Wages	\$30,097	\$42,288	0.00	\$42,288	0.00	1.4%	\$0	0.0%
Benefits	\$760,033	\$787,221	0.00	\$876,664	0.00	29.0%	\$89,443	11.4%
Operations	\$48,014	\$62,188	0.00	\$62,188	0.00	2.1%	\$0	0.0%
Total	\$2,771,147	\$2,841,131	41.35	\$3,026,847	42.44	100.0%	\$185,716	6.5%
Expenditure Summary by State Categorical Summary								
Instruction	\$2,516,001	\$2,584,705	36.55	\$2,763,780	37.64	91.3%	\$179,075	6.9%
Admin, Attend & Health	\$77,367	\$51,504	1.00	\$48,387	1.00	1.6%	-\$3,117	-6.1%
Technology	\$67,352	\$67,853	0.80	\$75,865	0.80	2.5%	\$8,012	11.8%
Building Services	\$110,427	\$137,069	3.00	\$138,815	3.00	4.6%	\$1,746	1.3%
Total	\$2,771,147	\$2,841,131	41.35	\$3,026,847	42.44	100.0%	\$185,716	6.5%
Staffing Summary								
Admin, Attend & Health								
Nurse			1.00		1.00			
Admin, Attend & Health Total			1.00		1.00			
Building Services								
Custodial			3.00		3.00			
Building Services Total			3.00		3.00			
Instruction								
Clerical			2.00		2.00			
Principal			1.00		1.00			
Teacher^			23.07		23.44			
Teaching Assistant			10.48		11.20			
Instruction Total			36.55		37.64			
Technology								
Teacher^			0.50		0.50			
Other Technical			0.30		0.30			
Technology Total			0.80		0.80			
Total			41.35		42.44			
Staffing Allocation Total^^			34.3		34.9			

^Positions included within the Teacher category are detailed in Section G – Staffing Allocations.

^^ Teaching Assistants (TAs) are allocated at a 3 TA to 1 Teacher ratio. This adjusted number is the FTE allocation to the school.

RED HILL ELEMENTARY SCHOOL

Home of the Moos

Red Hill Elementary

General School Information

- Grades Served: PK-5
- Address: 3901 Red Hill School Road, North Garden, VA 22959
- Phone: 434-293-5332
- Principal: Nancy McCullen
- 2020 Accreditation Status: Accreditation Waived
- 2019 Accreditation Status: Accredited

Together, the entire Red Hill community engages the mind and heart of each student to become a lifelong learner with the necessary skills to be a contributing member of our world. Through the development of curiosity, imagination, love of learning, respect for diversity, and intellect, all learners reach their highest potential.



Nancy McCullen
Principal
2018-Present

Student Enrollment: Fall Membership

	2018-2019	2019-2020	2020-2021
Total Enrollment	196	214	169
Students with Disabilities	18.4%	18.7%	18.9%
Economically Disadvantaged	55.6%	52.8%	48.5%
English Learners	4.6%	5.6%	4.7%



Facility Information

- Built in 1973
- 59,470 square feet
- 10.9-acre site

*Red Hill Elementary School is part of the **Southern Feeder Pattern**. Students continue to Walton Middle School and will graduate from Monticello High School.*

RED HILL ELEMENTARY SCHOOL

Home of the Moos

Red Hill Elementary School	Actual 19-20	Adopted 20-21	20-21 FTE	Draft 21-22	21-22 FTE	% of Total	Draft v. Adopted	
							Increase	% lcr
Expenditure Summary by Expense								
Salary	\$1,569,243	\$1,599,315	35.95	\$1,463,224	29.75	66.7%	-\$136,091	-8.5%
Other Wages	\$27,350	\$60,784	0.00	\$60,784	0.00	2.8%	\$0	0.0%
Benefits	\$604,646	\$640,367	0.00	\$607,849	0.00	27.7%	-\$32,518	-5.1%
Operations	\$25,837	\$63,454	0.00	\$63,454	0.00	2.9%	\$0	0.0%
Total	\$2,227,076	\$2,363,920	35.95	\$2,195,311	29.75	100.0%	-\$168,609	-7.1%

Expenditure Summary by State Categorical Summary

Instruction	\$2,022,557	\$2,158,829	32.40	\$1,996,476	26.15	90.9%	-\$162,353	-7.5%
Admin, Attend & Health	\$64,867	\$68,371	1.00	\$59,889	1.00	2.7%	-\$8,482	-12.4%
Technology	\$39,570	\$44,438	0.55	\$47,346	0.60	2.2%	\$2,908	6.5%
Building Services	\$100,082	\$92,282	2.00	\$91,600	2.00	4.2%	-\$682	-0.7%
Total	\$2,227,076	\$2,363,920	35.95	\$2,195,311	29.75	100.0%	-\$168,609	-7.1%

Staffing Summary

<u>Admin, Attend & Health</u>		
Nurse	1.00	1.00
Admin, Attend & Health Total	1.00	1.00
<u>Building Services</u>		
Custodial	2.00	2.00
Building Services Total	2.00	2.00
<u>Instruction</u>		
Clerical	2.00	2.00
Principal	1.00	1.00
Teacher^	18.95	18.77
Teaching Assistant	10.45	4.38
Instruction Total	32.40	26.15
<u>Technology</u>		
Teacher^	0.40	0.40
Other Technical	0.15	0.20
Technology Total	0.55	0.60
Total	35.95	29.75
Staffing Allocation Total^^	28.9	26.8

^Positions included within the Teacher category are detailed in Section G – Staffing Allocations.

^^ Teaching Assistants (TAs) are allocated at a 3 TA to 1 Teacher ratio. This adjusted number is the FTE allocation to the school.

SCOTTSVILLE ELEMENTARY SCHOOL

Home of the Tigers

Scottsville Elementary

General School Information

- Grades Served: PK-5
- Address: 7868 Scottsville Road, Scottsville, VA 24590
- Phone: 434-286-2441
- Principal: Staci England
- 2020 Accreditation Status: Accreditation Waived
- 2019 Accreditation Status: Accredited



Staci England
Principal
2018-Present

Scottsville Elementary School is a place where students and staff work together to learn and grow, just like the trees and other wildlife surrounding our school. We work to ensure that everyone here knows that they are an important part of the Tiger Team. We engage every student through their interests as we empower them to own their learning. We have developed relationships with the Town of Scottsville, B.F. Yancey Community Center, and several local churches to help in our shared mission of partnering with families to educate children. This year, we are especially proud of the amazing work that our staff, students, and families have done under the challenging circumstances of a pandemic. Our Tiger Team is extraordinary!

Student Enrollment: Fall Membership

	2018-2019	2019-2020	2020-2021
Total Enrollment	250	233	222
Students with Disabilities	17.6%	13.3%	11.3%
Economically Disadvantaged	46.8%	44.2%	45.0%
English Learners	1.6%	0.9%	2.7%



Facility Information

- Built in 1974
- 33,804 square feet
- 15.0-acre site

*Scottsville Elementary School is part of the **Southern Feeder Pattern**. Students continue to Walton Middle School and will graduate from Monticello High School*

SCOTTSVILLE ELEMENTARY SCHOOL

Home of the Tigers

Scottsville Elementary School	Actual 19-20	Adopted 20-21	20-21 FTE	Draft 21-22	21-22 FTE	% of Total	Draft v. Adopted	
							Increase	% lcr
Expenditure Summary by Expense								
Salary	\$1,694,147	\$1,518,853	30.85	\$1,637,974	34.07	68.8%	\$119,121	7.8%
Other Wages	\$53,767	\$40,165	0.00	\$40,165	0.00	1.7%	\$0	0.0%
Benefits	\$650,625	\$590,050	0.00	\$629,315	0.00	26.4%	\$39,265	6.7%
Operations	\$51,431	\$74,429	0.00	\$74,429	0.00	3.1%	\$0	0.0%
Total	\$2,449,970	\$2,223,497	30.85	\$2,381,883	34.07	100.0%	\$158,386	7.1%
Expenditure Summary by State Categorical Summary								
Instruction	\$2,242,097	\$2,013,842	26.70	\$2,174,162	29.87	91.3%	\$160,320	8.0%
Admin, Attend & Health	\$54,082	\$55,834	1.00	\$57,218	1.00	2.4%	\$1,384	2.5%
Technology	\$39,129	\$46,458	0.65	\$49,239	0.70	2.1%	\$2,781	6.0%
Building Services	\$114,662	\$107,363	2.50	\$101,264	2.50	4.3%	-\$6,099	-5.7%
Total	\$2,449,970	\$2,223,497	30.85	\$2,381,883	34.07	100.0%	\$158,386	7.1%
Staffing Summary								
<u>Admin, Attend & Health</u>								
Nurse			1.00		1.00			
Admin, Attend & Health Total			1.00		1.00			
<u>Building Services</u>								
Custodial			2.50		2.50			
Building Services Total			2.50		2.50			
<u>Instruction</u>								
Clerical			2.00		2.00			
Principal			1.00		1.00			
Teacher^			18.83		20.67			
Teaching Assistant			4.87		6.20			
Instruction Total			26.70		29.87			
<u>Technology</u>								
Teacher^			0.50		0.50			
Other Technical			0.15		0.20			
Technology Total			0.65		0.70			
Total			30.85		34.07			
Staffing Allocation Total^^			27.6		29.9			

^Positions included within the Teacher category are detailed in Section G – Staffing Allocations.

^^ Teaching Assistants (TAs) are allocated at a 3 TA to 1 Teacher ratio. This adjusted number is the FTE allocation to the school.

STONE-ROBINSON ELEMENTARY SCHOOL

Home of the Eagles

Stone-Robinson Elementary

General School Information

- Grades Served: PK-5
- Address: 958 North Milton Road Charlottesville, VA 22911
- Phone: 434-296-3754
- Principal: Mark Green
- 2020 Accreditation Status: Accreditation Waived
- 2019 Accreditation Status: Accredited

At Stone-Robinson Elementary, we believe all students come to us with a natural curiosity and love for learning. We maintain high expectations and provide authentic learning experiences that nurture each child's social, emotional, and academic growth. At the heart of it all, we believe in building strong relationships with our students and community members that promote a positive school climate — one that is safe, kind, and inclusive of all.



Mark Green
Principal
2019-Present

Student Enrollment: Fall Membership

	2018-2019	2019-2020	2020-2021
Total Enrollment	433	508	450
Students with Disabilities	15.0%	13.8%	13.6%
Economically Disadvantaged	27.9%	27.4%	28.0%
English Learners	3.2%	4.7%	6.4%



Facility Information

- Built in 1961
- 71,100 square feet
- 11.3-acre site

*Stone-Robinson Elementary School is part of the **Southern Feeder Pattern**. Students continue to Burley or Walton Middle School and will graduate from Monticello High School.*

STONE-ROBINSON ELEMENTARY SCHOOL

Home of the Eagles

Stone-Robinson Elementary School	Actual 19-20	Adopted 20-21	20-21 FTE	Draft 21-22	21-22 FTE	% of Total	Draft v. Adopted	
							Increase	% lcr
Expenditure Summary by Expense								
Salary	\$3,117,588	\$3,335,971	69.36	\$3,451,753	77.12	67.7%	\$115,782	3.5%
Other Wages	\$85,782	\$77,435	0.00	\$77,435	0.00	1.5%	\$0	0.0%
Benefits	\$1,178,206	\$1,286,299	0.00	\$1,482,963	0.00	29.1%	\$196,664	15.3%
Operations	\$48,643	\$86,846	0.00	\$86,846	0.00	1.7%	\$0	0.0%
Total	\$4,430,218	\$4,786,551	69.36	\$5,098,997	77.12	100.0%	\$312,446	6.5%
Expenditure Summary by State Categorical Summary								
Instruction	\$4,162,526	\$4,508,367	63.83	\$4,808,930	71.47	94.3%	\$300,563	6.7%
Admin, Attend & Health	\$46,551	\$47,107	1.00	\$47,934	1.00	0.9%	\$827	1.8%
Technology	\$64,721	\$67,288	0.90	\$67,570	0.90	1.3%	\$282	0.4%
Building Services	\$156,421	\$163,789	3.63	\$174,563	3.75	3.4%	\$10,774	6.6%
Total	\$4,430,218	\$4,786,551	69.36	\$5,098,997	77.12	100.0%	\$312,446	6.5%
Staffing Summary								
<u>Admin, Attend & Health</u>								
Nurse			1.00		1.00			
Admin, Attend & Health Total			1.00		1.00			
<u>Building Services</u>								
Custodial			3.63		3.75			
Building Services Total			3.63		3.75			
<u>Instruction</u>								
Assistant Principal			1.00		1.00			
Clerical			2.50		2.50			
Principal			1.00		1.00			
Teacher^			44.39		41.73			
Teaching Assistant			14.94		25.24			
Instruction Total			63.83		71.47			
<u>Technology</u>								
Teacher^			0.50		0.50			
Other Technical			0.40		0.40			
Technology Total			0.90		0.90			
Total			69.36		77.12			
Staffing Allocation Total^^			59.4		60.2			

^Positions included within the Teacher category are detailed in Section G – Staffing Allocations.

^^ Teaching Assistants (TAs) are allocated at a 3 TA to 1 Teacher ratio. This adjusted number is the FTE allocation to the school.

STONY POINT ELEMENTARY SCHOOL

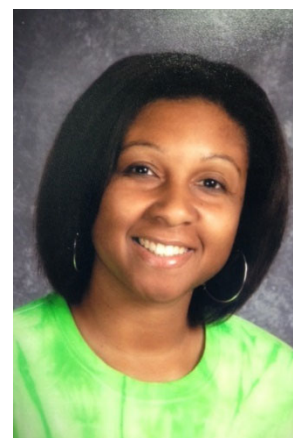
Home of the Dragons

Stony Point Elementary

General School Information

- Grades Served: K-5
- Address: 3893 Stony Point Road, Keswick, VA 22947
- Phone: 434-973-6405
- Principal: LaTishia Wilson
- 2020 Accreditation Status: Accreditation Waived
- 2019 Accreditation Status: Accredited

Stony Point Elementary is a creative community of high-achieving learners who encourage each other to find and explore things about which they are passionate. It is our mission to foster an environment that allows our members to persevere to overcome challenges, to be unafraid to fail or innovate, and to believe that there is no limit to what we can accomplish.



LaTishia Wilson
Principal
2018-Present

Student Enrollment: Fall Membership

	2018-2019	2019-2020	2020-2021
Total Enrollment	239	238	173
Students with Disabilities	8.4%	11.3%	8.1%
Economically Disadvantaged	28.5%	32.4%	31.8%
English Learners	5.0%	8.4%	4.0%



Facility Information

- Built in 1934
- 38,500 square feet
- 11.6-acre site

*Stony Point Elementary School is part of both the **Northern and Southern feeder patterns**. Students continue to either Burley Middle School and then Monticello High School, or Sutherland Middle School followed by Albemarle High School.*

STONY POINT ELEMENTARY SCHOOL

Home of the Dragons

Stony Point Elementary School	Actual 19-20	Adopted 20-21	20-21 FTE	Draft 21-22	21-22 FTE	% of Total	Draft v. Adopted	
							Increase	% lcr

Expenditure Summary by Expense

Salary	\$1,774,864	\$1,792,452	37.89	\$1,612,648	31.85	67.2%	-\$179,804	-10.0%
Other Wages	\$49,412	\$40,436	0.00	\$40,436	0.00	1.7%	\$0	0.0%
Benefits	\$694,248	\$746,035	0.00	\$683,358	0.00	28.5%	-\$62,677	-8.4%
Operations	\$36,398	\$61,700	0.00	\$61,700	0.00	2.6%	\$0	0.0%
Total	\$2,554,922	\$2,640,623	37.89	\$2,398,142	31.85	100.0%	-\$242,481	-9.2%

Expenditure Summary by State Categorical Summary

Instruction	\$2,289,401	\$2,379,794	33.29	\$2,128,174	27.25	88.7%	-\$251,620	-10.6%
Admin, Attend & Health	\$54,768	\$58,421	1.00	\$60,687	1.00	2.5%	\$2,266	3.9%
Technology	\$53,498	\$47,606	0.60	\$49,348	0.60	2.1%	\$1,742	3.7%
Building Services	\$157,256	\$154,802	3.00	\$159,933	3.00	6.7%	\$5,131	3.3%
Total	\$2,554,922	\$2,640,623	37.89	\$2,398,142	31.85	100.0%	-\$242,481	-9.2%

Staffing Summary

<u>Admin, Attend & Health</u>		
Nurse	1.00	1.00
Admin, Attend & Health Total	1.00	1.00
<u>Building Services</u>		
Custodial	3.00	3.00
Building Services Total	3.00	3.00
<u>Instruction</u>		
Clerical	2.00	2.00
Principal	1.00	1.00
Teacher^	21.84	19.36
Teaching Assistant	8.45	4.89
Instruction Total	33.29	27.25
<u>Technology</u>		
Teacher^	0.40	0.40
Other Technical	0.20	0.20
Technology Total	0.60	0.60
Total	37.89	31.85
Staffing Allocation Total^^	32.2	28.6

^Positions included within the Teacher category are detailed in Section G – Staffing Allocations.

^^ Teaching Assistants (TAs) are allocated at a 3 TA to 1 Teacher ratio. This adjusted number is the FTE allocation to the school.

WOODBROOK ELEMENTARY SCHOOL

Home of the Bears

Woodbrook Elementary

General School Information

- Grades Served: PK-5
- Address: 100 Woodbrook Drive, Charlottesville, VA 22901
- Phone: 434-973-6600
- Principal: Kristen Williams
- 2020 Accreditation Status: Accreditation Waived
- 2019 Accreditation Status: Accredited with Conditions

Woodbrook is a neighborhood school that thrives on community partnerships to support each child in their academic and social and emotional growth. We serve approximately 600 students who all live within a four-mile radius of the school. Our families speak 18 different languages and bring a unique cultural perspective to the home/school partnership. We are proud of the diversity in our school and celebrate all that we are able to learn from and with each other. We are committed to providing the best educational experience possible for our students. It is our honor to instill in them a curiosity for lifelong learning and the desire to be a kind and inclusive citizen in our school and in this world!



Kristen Williams
Principal
2019-Present

Student Enrollment: Fall Membership

	2018-2019	2019-2020	2020-2021
Total Enrollment	534	580	569
Students with Disabilities	12.4%	11.9%	11.1%
Economically Disadvantaged	60.1%	60.9%	57.1%
English Learners	20.4%	25.5%	24.4%



Facility Information

- Built in 1966
- 82,458 square feet
- 12.0-acre site

*Woodbrook Elementary School is part of the **Northern Feeder Pattern**. Students continue to Jouett Middle School and will graduate from Albemarle High School.*

WOODBROOK ELEMENTARY SCHOOL

Home of the Bears

Woodbrook Elementary School	Actual 19-20	Adopted 20-21	20-21 FTE	Draft 21-22	21-22 FTE	% of Total	Draft v. Adopted	
							Increase	% lcr
Expenditure Summary by Expense								
Salary	\$3,576,650	\$3,800,025	79.86	\$3,953,228	78.07	68.6%	\$153,203	4.0%
Other Wages	\$119,760	\$73,041	0.00	\$72,711	0.00	1.3%	-\$330	-0.5%
Benefits	\$1,317,059	\$1,411,455	0.00	\$1,625,541	0.00	28.2%	\$214,086	15.2%
Operations	\$73,706	\$112,989	0.00	\$112,989	0.00	2.0%	\$0	0.0%
Total	\$5,087,174	\$5,397,510	79.86	\$5,764,469	78.07	100.0%	\$366,959	6.8%
Expenditure Summary by State Categorical Summary								
Instruction	\$4,810,923	\$5,062,699	72.86	\$5,453,004	72.44	94.6%	\$390,305	7.7%
Admin, Attend & Health	\$46,349	\$46,753	1.00	\$47,982	1.00	0.8%	\$1,229	2.6%
Technology	\$71,515	\$72,696	1.00	\$80,110	1.00	1.4%	\$7,414	10.2%
Building Services	\$158,387	\$215,362	5.00	\$183,373	3.63	3.2%	-\$31,989	-14.9%
Total	\$5,087,174	\$5,397,510	79.86	\$5,764,469	78.07	100.0%	\$366,959	6.8%
Staffing Summary								
<u>Admin, Attend & Health</u>								
Nurse			1.00		1.00			
Admin, Attend & Health Total			1.00		1.00			
<u>Building Services</u>								
Custodial			5.00		3.63			
Building Services Total			5.00		3.63			
<u>Instruction</u>								
Assistant Principal			1.00		1.00			
Clerical			2.50		2.50			
Principal			1.00		1.00			
Teacher^			52.42		56.67			
Teaching Assistant			15.94		11.27			
Instruction Total			72.86		72.44			
<u>Technology</u>								
Teacher^			0.50		0.50			
Other Technical			0.50		0.50			
Technology Total			1.00		1.00			
Total			79.86		78.07			
Staffing Allocation Total^^			69.2		70.5			

^Positions included within the Teacher category are detailed in Section G – Staffing Allocations.

^^ Teaching Assistants (TAs) are allocated at a 3 TA to 1 Teacher ratio. This adjusted number is the FTE allocation to the school.

BURLEY MIDDLE SCHOOL

Home of the Bears

Burley Middle School

General School Information

- Grades Served: 6-8
- Address: 901 Rose Hill Drive, Charlottesville, VA 22903
- Phone: 434-295-5101
- Principal: Kasaundra Blount
- 2020 Accreditation Status: Accreditation Waived
- 2019 Accreditation Status: Accredited

Jackson P. Burley Middle School, continuing to build on its historic legacy of integrity and achievement, seeks to cultivate educational partnerships that engage students, staff, families and the community in the pursuit of positive, academic outcomes for all students. Burley Middle School's vision and mission is driven by the core values, priorities, vision, and mission of Albemarle County Public Schools.



Kasaundra Blount
Principal
2020-Present

Student Enrollment: Fall Membership

	2018-2019	2019-2020	2020-2021
Total Enrollment	584	588	609
Students with Disabilities	12.8%	15.1%	16.3%
Economically Disadvantaged	39.0%	39.8%	44.5%
English Learners	16.6%	15.6%	17.1%



Facility Information

- Built in 1951
- 123,626 square feet
- 15.3-acre site

*Burley Middle School is part of both the **Northern and Southern feeder patterns**. Students previously attended Agnor-Hurt, Mountain View (Cale), Stone-Robinson, or Stony Point Elementary School, and will graduate from either Albemarle or Monticello High School.*

BURLEY MIDDLE SCHOOL

Home of the Bears

Burley Middle School	Actual 19-20	Adopted 20-21	20-21 FTE	Draft 21-22	21-22 FTE	% of Total	Draft v. Adopted	
							Increase	% lcr
Expenditure Summary by Expense								
Salary	\$3,691,766	\$4,067,886	76.06	\$4,285,631	79.95	67.7%	\$217,745	5.4%
Other Wages	\$50,492	\$108,201	0.00	\$107,960	0.00	1.7%	-\$241	-0.2%
Benefits	\$1,457,256	\$1,665,702	0.00	\$1,781,735	0.00	28.1%	\$116,033	7.0%
Operations	\$83,790	\$159,171	0.00	\$159,171	0.00	2.5%	\$0	0.0%
Total	\$5,283,305	\$6,000,960	76.06	\$6,334,497	79.95	100.0%	\$333,537	5.6%
Expenditure Summary by State Categorical Summary								
Instruction	\$4,905,201	\$5,642,671	68.76	\$5,958,592	72.65	94.1%	\$315,921	5.6%
Admin, Attend & Health	\$57,970	\$57,858	1.00	\$59,299	1.00	0.9%	\$1,441	2.5%
Technology	\$107,171	\$97,598	1.30	\$100,730	1.30	1.6%	\$3,132	3.2%
Building Services	\$212,962	\$202,833	5.00	\$215,876	5.00	3.4%	\$13,043	6.4%
Total	\$5,283,305	\$6,000,960	76.06	\$6,334,497	79.95	100.0%	\$333,537	5.6%
Staffing Summary								
<u>Admin, Attend & Health</u>								
Nurse			1.00		1.00			
Admin, Attend & Health Total			1.00		1.00			
<u>Building Services</u>								
Custodial			5.00		5.00			
Building Services Total			5.00		5.00			
<u>Instruction</u>								
Assistant Principal			1.00		1.00			
Clerical			4.00		4.00			
Principal			1.00		1.00			
Teacher^			56.76		59.15			
Teaching Assistant			6.00		7.50			
Instruction Total			68.76		72.65			
<u>Technology</u>								
Teacher^			0.50		0.50			
Other Technical			0.80		0.80			
Technology Total			1.30		1.30			
Total			76.06		79.95			
Staffing Allocation Total^^			72.0		74.9			

^Positions included within the Teacher category are detailed in Section G – Staffing Allocations.

^^ Teaching Assistants (TAs) are allocated at a 3 TA to 1 Teacher ratio. This adjusted number is the FTE allocation to the school.

HENLEY MIDDLE SCHOOL

Home of the Hornets

Henley Middle School

General School Information

- Grades Served: 6-8
- Address: 5880 Rockfish Gap Turnpike, Crozet, VA 22932
- Phone: 434-823-4393
- Principal: Beth Costa
- 2020 Accreditation Status: Accreditation Waived
- 2019 Accreditation Status: Accredited

Given the challenges of the past year, Henley has committed to becoming a more culturally responsive and anti-racist school community. This commitment includes all stakeholders. We continue to emphasize social/emotional learning for all and have worked especially hard in a virtual learning world to know our students and to promote connectivity in their lives.



Beth Costa
Principal
2015-Present

Because we believe tracking to be an equity issue, we have adjusted our instructional model to focus on differentiation and culturally responsive teaching practices for all learners, as an alternative to ability grouping.

Middle school is the most formative time in a child's life, and we have the opportunity every day to shape how students feel about themselves as learners, citizens and adolescents. Our structures influence our practices, so we constantly evaluate our structures against culturally responsive and anti-racist practices and structures to better create and maintain a student-centered environment.

Student Enrollment: Fall Membership

	2018-2019	2019-2020	2020-2021
Total Enrollment	900	919	884
Students with Disabilities	10.2%	9.9%	9.7%
Economically Disadvantaged	13.6%	13.2%	17.0%
English Learners	2.4%	2.6%	1.8%



Facility Information

- Built in 1966
- 120,419 square feet
- 30.0-acre site

*Henley Middle School is part of the **Western Feeder Pattern**. Students previously attended Brownsville, Crozet, Meriwether Lewis, or Murray Elementary School, and will graduate from Western Albemarle High School.*

HENLEY MIDDLE SCHOOL

Home of the Hornets

Henley Middle School	Actual 19-20	Adopted 20-21	20-21 FTE	Draft 21-22	21-22 FTE	% of Total	Draft v. Adopted	
							Increase	% lcr
Expenditure Summary by Expense								
Salary	\$4,809,208	\$5,065,384	97.15	\$5,025,332	94.95	67.5%	-\$40,052	-0.8%
Other Wages	\$142,091	\$145,116	0.00	\$145,116	0.00	2.0%	\$0	0.0%
Benefits	\$1,838,328	\$2,010,553	0.00	\$2,075,567	0.00	27.9%	\$65,014	3.2%
Operations	\$144,718	\$195,001	0.00	\$195,001	0.00	2.6%	\$0	0.0%
Total	\$6,934,345	\$7,416,054	97.15	\$7,441,016	94.95	100.0%	\$24,962	0.3%

Expenditure Summary by State Categorical Summary

Instruction	\$6,524,640	\$6,934,055	88.15	\$6,952,024	85.95	93.4%	\$17,969	0.3%
Admin, Attend & Health	\$50,985	\$48,609	1.00	\$49,885	1.00	0.7%	\$1,276	2.6%
Technology	\$165,383	\$164,020	2.00	\$169,459	2.00	2.3%	\$5,439	3.3%
Building Services	\$193,336	\$269,370	6.00	\$269,648	6.00	3.6%	\$278	0.1%
Total	\$6,934,345	\$7,416,054	97.15	\$7,441,016	94.95	100.0%	\$24,962	0.3%

Staffing Summary

<u>Admin, Attend & Health</u>		
Nurse	1.00	1.00
Admin, Attend & Health Total	1.00	1.00
<u>Building Services</u>		
Custodial	6.00	6.00
Building Services Total	6.00	6.00
<u>Instruction</u>		
Assistant Principal	3.00	2.00
Clerical	4.50	4.50
Principal	1.00	1.00
Teacher^	68.65	69.45
Teaching Assistant	11.00	9.00
Instruction Total	88.15	85.95
<u>Technology</u>		
Teacher^	1.00	1.00
Other Technical	1.00	1.00
Technology Total	2.00	2.00
Total	97.15	94.95
Staffing Allocation Total^^	89.8	88.9

^Positions included within the Teacher category are detailed in Section G – Staffing Allocations.

^^ Teaching Assistants (TAs) are allocated at a 3 TA to 1 Teacher ratio. This adjusted number is the FTE allocation to the school.

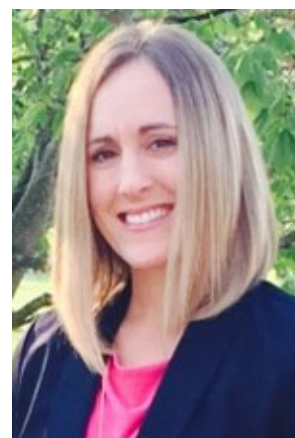
JOUETT MIDDLE SCHOOL

Home of the Jaguars

Jouett Middle School

General School Information

- Grades Served: 6-8
- Address: 210 Lambs Lane, Charlottesville, VA 22901
- Phone: 434-975-9320
- Principal: Ashby Johnson
- 2020 Accreditation Status: Accreditation Waived
- 2019 Accreditation Status: Accredited



Ashby Johnson
Principal
2019-Present

Jack Jouett Middle School serves students in the urban ring and Earlysville area of Albemarle County. Our diverse students and families speak 27 different languages and make Jouett a special place to be. We maintain a strong focus on college and career readiness, as evidenced by our Advancement Via Individual Determination (AVID) program. We are an AVID National Demonstration School, which indicates that we are among the top 3% of schools in the world that implement AVID to fidelity. Our core values at Jouett are growth, compassion, risk-taking, connection, and equity.

During the school year of 2021-22, we have continued our goals to be focused on the achievement of all students, but especially our students who receive special education services. We are dedicated and committed to creating family partnerships built on trust, respect, open communication, and collaboration. Our staff values each student and their unique needs and works to meet students where they are to support their social, emotional and academic growth. We have an intentional focus on learning and implementing culturally responsive teaching practices in our classrooms. We have formed several community partnerships over the years to include various parts of the University of Virginia, Boys & Girls Club, Region Ten, 100 Black Men, Young Women's Leadership Program, and Madison House.

Student Enrollment: Fall Membership

	2018-2019	2019-2020	2020-2021
Total Enrollment	609	655	681
Students with Disabilities	12.2%	11.6%	12.8%
Economically Disadvantaged	53.7%	55.1%	58.0%
English Learners	23.8%	26.0%	25.4%



Facility Information

- Built in 1966
- 94,929 square feet
- 20.0-acre site

*Jouett Middle School is part of the **Northern Feeder Pattern**. Students previously attended Agnor-Hurt, Greer, Broadus Wood, or Woodbrook Elementary School, and will graduate from Albemarle High School.*

JOUETT MIDDLE SCHOOL

Home of the Jaguars

Jouett Middle School	Actual 19-20	Adopted 20-21	20-21 FTE	Draft 21-22	21-22 FTE	% of Total	Draft v. Adopted	
							Increase	% lcr
Expenditure Summary by Expense								
Salary	\$4,095,369	\$4,460,701	87.74	\$4,645,337	89.84	68.7%	\$184,636	4.1%
Other Wages	\$78,307	\$113,810	0.00	\$113,808	0.00	1.7%	-\$2	0.0%
Benefits	\$1,512,746	\$1,687,805	0.00	\$1,846,518	0.00	27.3%	\$158,713	9.4%
Operations	\$90,350	\$157,433	0.00	\$157,433	0.00	2.3%	\$0	0.0%
Total	\$5,776,771	\$6,419,749	87.74	\$6,763,096	89.84	100.0%	\$343,347	5.3%

Expenditure Summary by State Categorical Summary

Instruction	\$5,449,215	\$6,072,543	80.74	\$6,366,598	82.54	94.1%	\$294,055	4.8%
Admin, Attend & Health	\$48,576	\$49,166	1.00	\$50,637	1.00	0.7%	\$1,471	3.0%
Technology	\$88,377	\$78,768	1.00	\$109,155	1.30	1.6%	\$30,387	38.6%
Building Services	\$190,603	\$219,272	5.00	\$236,706	5.00	3.5%	\$17,434	8.0%
Total	\$5,776,771	\$6,419,749	87.74	\$6,763,096	89.84	100.0%	\$343,347	5.3%

Staffing Summary

<u>Admin, Attend & Health</u>		
Nurse	1.00	1.00
Admin, Attend & Health Total	1.00	1.00
<u>Building Services</u>		
Custodial	5.00	5.00
Building Services Total	5.00	5.00
<u>Instruction</u>		
Assistant Principal	1.00	1.00
Clerical	4.00	4.00
Principal	1.00	1.00
Teacher^	66.74	67.54
Teaching Assistant	8.00	9.00
Instruction Total	80.74	82.54
<u>Technology</u>		
Teacher^	0.20	0.50
Other Technical	0.80	0.80
Technology Total	1.00	1.30
Total	87.74	89.84
Staffing Allocation Total^^	82.4	83.8

^Positions included within the Teacher category are detailed in Section G – Staffing Allocations.

^^ Teaching Assistants (TAs) are allocated at a 3 TA to 1 Teacher ratio. This adjusted number is the FTE allocation to the school.

SUTHERLAND MIDDLE SCHOOL

Home of the Sharks

Sutherland Middle School

General School Information

- Grades Served: 6-8
- Address: 2801 Powell Creek Drive, Charlottesville, VA 22911
- Phone: 434-975-0599
- Principal: Megan Wood
- 2020 Accreditation Status: Accreditation Waived
- 2019 Accreditation Status: Accredited



Megan Wood
Principal
2018-Present

Sutherland Middle School enrolls nearly 600 students in grades 6 through 8 and includes over 70 faculty and staff. We are committed to providing our students with high quality learning experiences that are relevant and meaningful. We firmly believe that supporting student social and emotional well-being is an integral part of the middle school experience. Therefore, we encourage our students to participate in a variety of extracurricular activities that include but are not limited to school sponsored clubs, our fine and performing arts programs, and athletic opportunities through Albemarle Parks and Recreation. We feel that it is important for students to pursue and develop their personal interests. To support this endeavor, Sutherland has made significant changes to its schedule options for students to increase opportunities to take a wide variety of elective courses from the arts to career and technical education. We support the division's equity mission by eliminating several barriers to specific elective courses and de-tracking our math and English courses.

Student Enrollment: Fall Membership

	2018-2019	2019-2020	2020-2021
Total Enrollment	591	598	584
Students with Disabilities	12.4%	11.4%	10.6%
Economically Disadvantaged	17.6%	19.6%	21.1%
English Learners	8.1%	7.9%	6.8%



Facility Information

- Built in 1994
- 94,440 square feet
- 21.0-acre site

*Sutherland Middle School is part of the **Northern Feeder Pattern**. Students previously attended Baker-Butler, Hollymead, or Stony-Point Elementary School, and will graduate from Albemarle High School.*

SUTHERLAND MIDDLE SCHOOL

Home of the Sharks

Sutherland Middle School	Actual 19-20	Adopted 20-21	20-21 FTE	Draft 21-22	21-22 FTE	% of Total	Draft v. Adopted	
							Increase	% lcr
Expenditure Summary by Expense								
Salary	\$3,548,913	\$3,563,448	69.32	\$3,595,574	66.67	67.6%	\$32,126	0.9%
Other Wages	\$101,658	\$105,222	0.00	\$105,221	0.00	2.0%	-\$1	0.0%
Benefits	\$1,377,584	\$1,429,699	0.00	\$1,477,061	0.00	27.8%	\$47,362	3.3%
Operations	\$90,948	\$143,778	0.00	\$143,778	0.00	2.7%	\$0	0.0%
Total	\$5,119,104	\$5,242,147	69.32	\$5,321,634	66.67	100.0%	\$79,487	1.5%
Expenditure Summary by State Categorical Summary								
Instruction	\$4,824,589	\$5,001,973	63.82	\$4,995,498	60.07	93.9%	-\$6,475	-0.1%
Admin, Attend & Health	\$39,186	\$39,603	1.00	\$40,375	1.00	0.8%	\$772	1.9%
Technology	\$13,888	\$0	0.00	\$82,555	1.10	1.6%	\$82,555	N/A
Building Services	\$241,442	\$200,571	4.50	\$203,206	4.50	3.8%	\$2,635	1.3%
Total	\$5,119,104	\$5,242,147	69.32	\$5,321,634	66.67	100.0%	\$79,487	1.5%
Staffing Summary								
Admin, Attend & Health								
Nurse			1.00		1.00			
Admin, Attend & Health Total			1.00		1.00			
Building Services								
Custodial			4.50		4.50			
Building Services Total			4.50		4.50			
Instruction								
Assistant Principal			1.00		1.00			
Clerical			4.00		4.00			
Principal			1.00		1.00			
Teacher^			48.35		47.57			
Teaching Assistant			9.47		6.50			
Instruction Total			63.82		60.07			
Technology								
Teacher^			0.00		0.50			
Other Technical			0.00		0.60			
Technology Total			0.00		1.10			
Total			69.32		66.67			
Staffing Allocation Total^^			63.0		62.3			

^Positions included within the Teacher category are detailed in Section G – Staffing Allocations.

^^ Teaching Assistants (TAs) are allocated at a 3 TA to 1 Teacher ratio. This adjusted number is the FTE allocation to the school.

WALTON MIDDLE SCHOOL

Home of the Wildcats

Walton Middle School

General School Information

- Grades Served: 6-8
- Address: 4217 Red Hill Road, Charlottesville, VA 22903
- Phone: 434-977-5615
- Principal: Josh Walton
- 2020 Accreditation Status: Accreditation Waived
- 2019 Accreditation Status: Accredited

Walton Middle School exists to serve students in the Southern Feeder Pattern of Albemarle County by establishing a community of learners and learning built on relationships, relevance, and rigor. We have three Guiding Principles:

1. We are a community of safe, responsible and respectful learners. This means that we help each other to grow academically, emotionally and socially.
2. We are welcoming, inclusive, and student-centered. We help ensure that doors of opportunity are open.
3. We are a community that helps students to own their future through risk-taking, pursuit of passions, and a mindset of continuous improvement. We work to enact these principles in our daily work by focusing on the individual needs of students through our advisory class and staff training in social-emotional learning and culturally responsive teaching practices.



Josh Walton
Principal
2016-Present

Student Enrollment: Fall Membership

	2018-2019	2019-2020	2020-2021
Total Enrollment	358	345	347
Students with Disabilities	14.8%	15.7%	20.7%
Economically Disadvantaged	37.2%	40.3%	41.2%
English Learners	5.0%	4.1%	3.7%



Facility Information

- Built in 1974
- 98,340 square feet
- 50.0-acre site

*Walton Middle School is part of the **Southern Feeder Pattern**. Students previously attended Mountain View (Cale), Red Hill, Scottsville, or Stone-Robinson Elementary School, and will graduate from Monticello High School.*

WALTON MIDDLE SCHOOL

Home of the Wildcats

Walton Middle School	Actual 19-20	Adopted 20-21	20-21 FTE	Draft 21-22	21-22 FTE	% of Total	Draft v. Adopted	
							Increase	% lcr
Expenditure Summary by Expense								
Salary	\$2,861,351	\$2,906,422	58.18	\$3,153,147	61.05	67.7%	\$246,725	8.5%
Other Wages	\$52,836	\$95,202	0.00	\$94,972	0.00	2.0%	-\$230	-0.2%
Benefits	\$1,160,586	\$1,213,233	0.00	\$1,319,940	0.00	28.3%	\$106,707	8.8%
Operations	\$79,863	\$91,501	0.00	\$91,501	0.00	2.0%	\$0	0.0%
Total	\$4,154,636	\$4,306,358	58.18	\$4,659,560	61.05	100.0%	\$353,202	8.2%
Expenditure Summary by State Categorical Summary								
Instruction	\$3,834,840	\$3,974,969	51.98	\$4,329,550	54.95	92.9%	\$354,581	8.9%
Admin, Attend & Health	\$46,087	\$46,503	1.00	\$47,954	1.00	1.0%	\$1,451	3.1%
Technology	\$75,313	\$99,363	1.20	\$85,921	1.10	1.8%	-\$13,442	-13.5%
Building Services	\$198,396	\$185,523	4.00	\$196,135	4.00	4.2%	\$10,612	5.7%
Total	\$4,154,636	\$4,306,358	58.18	\$4,659,560	61.05	100.0%	\$353,202	8.2%
Staffing Summary								
<u>Admin, Attend & Health</u>								
Nurse			1.00		1.00			
Admin, Attend & Health Total			1.00		1.00			
<u>Building Services</u>								
Custodial			4.00		4.00			
Building Services Total			4.00		4.00			
<u>Instruction</u>								
Assistant Principal			1.00		1.00			
Clerical			3.00		3.00			
Principal			1.00		1.00			
Teacher^			38.98		40.95			
Teaching Assistant			8.00		9.00			
Instruction Total			51.98		54.95			
<u>Technology</u>								
Teacher^			0.50		0.50			
Other Technical			0.70		0.60			
Technology Total			1.20		1.10			
Total			58.18		61.05			
Staffing Allocation Total^^			52.8		55.0			

^Positions included within the Teacher category are detailed in Section G – Staffing Allocations.

^^ Teaching Assistants (TAs) are allocated at a 3 TA to 1 Teacher ratio. This adjusted number is the FTE allocation to the school.

ALBEMARLE HIGH SCHOOL

Home of the Patriots

Albemarle High School

General School Information

- Grades Served: 9-12
- Address: 2775 Hydraulic Road, Charlottesville, VA 22901
- Phone: 434-975-9300
- Principal: Darah Bonham
- 2020 Accreditation Status: Accreditation Waived
- 2019 Accreditation Status: Accredited

The oldest and largest high school in the division, Albemarle High School serves a diverse cadre of students by providing a quality education with enriching experiences for our students.

Student Enrollment: Fall Membership

	2018-2019	2019-2020	2020-2021
Total Enrollment	1,927	1,962	1,893
Students with Disabilities	13.1%	13.0%	12.4%
Economically Disadvantaged	27.6%	28.2%	34.2%
English Learners	10.2%	11.5%	10.4%



Darah Bonham
Principal
2019-Present



Facility Information

- Built in 1953
- 350,103 square feet
- 40.0-acre site

*Albemarle High School is the final destination of all **Northern Feeder Pattern** middle and elementary schools.*

ALBEMARLE HIGH SCHOOL

Home of the Patriots

Albemarle High School	Actual 19-20	Adopted 20-21	20-21 FTE	Draft 21-22	21-22 FTE	% of Total	Draft v. Adopted	
							Increase	% lcr
Expenditure Summary by Expense								
Salary	\$11,789,491	\$11,645,190	228.65	\$11,302,985	212.19	65.5%	-\$342,205	-2.9%
Other Wages	\$625,789	\$691,719	0.00	\$691,718	0.00	4.0%	-\$1	0.0%
Benefits	\$4,571,345	\$4,680,020	0.00	\$4,643,909	0.00	26.9%	-\$36,111	-0.8%
Operations	\$547,444	\$618,499	0.00	\$618,499	0.00	3.6%	\$0	0.0%
Total	\$17,534,069	\$17,635,428	228.65	\$17,257,111	212.19	100.0%	-\$378,317	-2.1%
Expenditure Summary by State Categorical Summary								
Instruction	\$16,537,992	\$16,619,210	209.05	\$16,250,673	193.19	94.2%	-\$368,537	-2.2%
Admin, Attend & Health	\$62,482	\$70,511	1.00	\$69,705	1.00	0.4%	-\$806	-1.1%
Technology	\$263,297	\$265,392	3.60	\$226,790	3.00	1.3%	-\$38,602	-14.5%
Building Services	\$670,298	\$680,315	15.00	\$709,943	15.00	4.1%	\$29,628	4.4%
Total	\$17,534,069	\$17,635,428	228.65	\$17,257,111	212.19	100.0%	-\$378,317	-2.1%
Staffing Summary								
<u>Admin, Attend & Health</u>								
Nurse			0.91		0.91			
Other Management			0.09		0.09			
Admin, Attend & Health Total			1.00		1.00			
<u>Building Services</u>								
Custodial			15.00		15.00			
Building Services Total			15.00		15.00			
<u>Instruction</u>								
Assistant Principal			2.00		4.00			
Assistant Principal - Intern			0.00		0.00			
Clerical			13.00		12.00			
Other Management			2.00		2.00			
Principal			3.00		1.00			
Social Worker			1.00		1.00			
Teacher^			154.21		149.98			
Teaching Assistant			33.84		23.21			
Instruction Total			209.05		193.19			
<u>Technology</u>								
Teacher^			1.60		1.00			
Other Technical			2.00		2.00			
Technology Total			3.60		3.00			
Total			228.65		212.19			
Staffing Allocation Total^^			206.0		196.6			

^Positions included within the Teacher category are detailed in Section G – Staffing Allocations.

^^ Teaching Assistants (TAs) are allocated at a 3 TA to 1 Teacher ratio. This adjusted number is the FTE allocation to the school.

MONTICELLO HIGH SCHOOL

Home of the Mustangs

Monticello High School

General School Information

- Grades Served: 9-12
- Address: 1400 Independence Way, Charlottesville, VA 22902
- Phone: 434-244-3100
- Principal: Rick Vrhovac
- 2020 Accreditation Status: Accreditation Waived
- 2019 Accreditation Status: Accredited

Monticello High School serves the community of the Southern Feeder Pattern. Monticello has always had and continues to have a proud tradition of academics, fine arts, athletics and extracurricular events. Last year, prior to school closing in March, we hosted our second annual Monticello Showcase. Our staff and students performed live events, student-led conferences, philosophical chairs, and many other events for our community.



Rick Vrhovac
Principal
2017-Present

Student Enrollment: Fall Membership

	2018-2019	2019-2020	2020-2021
Total Enrollment	1,142	1,217	1,197
Students with Disabilities	16.0%	14.9%	14.4%
Economically Disadvantaged	29.3%	29.3%	34.8%
English Learners	6.7%	7.1%	6.3%



Facility Information

- Built in 1998
- 249,195 square feet
- 70.0-acre site

*Monticello High School is the final destination of all **Southern Feeder Pattern** middle and elementary schools.*

MONTICELLO HIGH SCHOOL

Home of the Mustangs

Monticello High School	Actual 19-20	Adopted 20-21	20-21 FTE	Draft 21-22	21-22 FTE	% of Total	Draft v. Adopted	
							Increase	% lcr
Expenditure Summary by Expense								
Salary	\$7,421,908	\$7,502,360	141.03	\$7,925,981	145.09	64.9%	\$423,621	5.6%
Other Wages	\$544,044	\$559,384	0.00	\$559,153	0.00	4.6%	-\$231	0.0%
Benefits	\$2,851,001	\$2,965,476	0.00	\$3,244,934	0.00	26.6%	\$279,458	9.4%
Operations	\$503,893	\$476,241	0.00	\$476,241	0.00	3.9%	\$0	0.0%
Total	\$11,320,846	\$11,503,461	141.03	\$12,206,309	145.09	100.0%	\$702,848	6.1%
Expenditure Summary by State Categorical Summary								
Instruction	\$10,490,777	\$10,784,949	127.03	\$11,463,886	131.09	93.9%	\$678,937	6.3%
Admin, Attend & Health	\$59,666	\$61,092	1.00	\$63,070	1.00	0.5%	\$1,978	3.2%
Technology	\$171,540	\$169,372	2.00	\$168,128	2.00	1.4%	-\$1,244	-0.7%
Building Services	\$598,863	\$488,048	11.00	\$511,225	11.00	4.2%	\$23,177	4.7%
Total	\$11,320,846	\$11,503,461	141.03	\$12,206,309	145.09	100.0%	\$702,848	6.1%
Staffing Summary								
<u>Admin, Attend & Health</u>								
Nurse			1.00		1.00			
Admin, Attend & Health Total			1.00		1.00			
<u>Building Services</u>								
Custodial			11.00		11.00			
Building Services Total			11.00		11.00			
<u>Instruction</u>								
Assistant Principal			3.00		3.00			
Clerical			10.00		10.00			
Other Management			2.00		2.00			
Principal			1.00		1.00			
Teacher^			100.03		105.09			
Teaching Assistant			11.00		10.00			
Instruction Total			127.03		131.09			
<u>Technology</u>								
Teacher^			1.00		1.00			
Other Technical			1.00		1.00			
Technology Total			2.00		2.00			
Total			141.03		145.09			
Staffing Allocation Total^^			133.7		138.4			

^Positions included within the Teacher category are detailed in Section G – Staffing Allocations.

^^ Teaching Assistants (TAs) are allocated at a 3 TA to 1 Teacher ratio. This adjusted number is the FTE allocation to the school.

WESTERN ALBEMARLE HIGH SCHOOL

Home of the Warriors

Western Albemarle High School

General School Information

- Grades Served: 9-12
- Address: 5941 Rockfish Gap Turnpike, Crozet, VA 22932
- Phone: 434-823-8700
- Principal: Jason Lee
- 2020 Accreditation Status: Accreditation Waived
- 2019 Accreditation Status: Accredited

Western Albemarle High School (WAHS) is working to identify and remove practices that perpetuate the achievement gap. An example is our work in cementing our understanding of the ACPS Anti-Racism Policy and using the Equity Audit when selecting curricular materials. Within our US History curriculum, we have embedded Reframing the Narrative as part of redesigning the taught history curriculum to include diverse perspectives of historical events.

Our librarians regularly invite speakers, such as Hannah Koizumi, Mixed Race Student Coalition, UVA Student Council and Rho Kappa's Los Veteranos virtual program from WWII Museum to address culturally relevant topics during a lunch series.

WAHS works to create a culture of high expectations, supported by the establishment of strong relationships with students and families. Our motto this year is "Together We Care" and we are encouraging all stakeholders to be a part of the student learning process.

Student Enrollment: Fall Membership

	2018-2019	2019-2020	2020-2021
Total Enrollment	1,158	1,207	1,144
Students with Disabilities	10.8%	11.6%	11.5%
Economically Disadvantaged	10.2%	10.5%	12.3%
English Learners	0.9%	0.7%	1.0%



Jason Lee
Principal
2020-Present



Facility Information

- Built in 1977
- 199,904 square feet
- 75.0-acre site

*Western Albemarle is the final destination of all **Western Feeder Pattern** middle and elementary schools.*

WESTERN ALBEMARLE HIGH SCHOOL

Home of the Warriors

Western Albemarle High School	Actual 19-20	Adopted 20-21	20-21 FTE	Draft 21-22	21-22 FTE	% of Total	Draft v. Adopted	
							Increase	% lcr
Expenditure Summary by Expense								
Salary	\$7,131,282	\$7,051,075	132.39	\$7,022,170	127.49	64.3%	-\$28,905	-0.4%
Other Wages	\$497,241	\$552,761	0.00	\$552,761	0.00	5.1%	\$0	0.0%
Benefits	\$2,724,678	\$2,754,042	0.00	\$2,823,385	0.00	25.8%	\$69,343	2.5%
Operations	\$492,180	\$529,210	0.00	\$529,210	0.00	4.8%	\$0	0.0%
Total	\$10,845,381	\$10,887,088	132.39	\$10,927,526	127.49	100.0%	\$40,438	0.4%
Expenditure Summary by State Categorical Summary								
Instruction	\$10,146,917	\$10,209,836	118.59	\$10,228,207	113.69	93.6%	\$18,371	0.2%
Admin, Attend & Health	\$102,142	\$72,728	1.00	\$68,981	1.00	0.6%	-\$3,747	-5.2%
Technology	\$158,996	\$150,016	1.80	\$155,339	1.80	1.4%	\$5,323	3.5%
Building Services	\$437,326	\$454,508	11.00	\$474,999	11.00	4.3%	\$20,491	4.5%
Total	\$10,845,381	\$10,887,088	132.39	\$10,927,526	127.49	100.0%	\$40,438	0.4%
Staffing Summary								
<u>Admin, Attend & Health</u>								
Nurse			0.91		0.91			
Other Management			0.09		0.09			
Admin, Attend & Health Total			1.00		1.00			
<u>Building Services</u>								
Custodial			11.00		11.00			
Building Services Total			11.00		11.00			
<u>Instruction</u>								
Assistant Principal			3.00		3.00			
Assistant Principal - Intern			0.00		0.00			
Clerical			10.00		10.00			
Other Management			2.00		2.00			
Principal			1.00		1.00			
Teacher^			88.99		89.89			
Teaching Assistant			13.60		7.80			
Instruction Total			118.59		113.69			
<u>Technology</u>								
Teacher^			0.80		0.80			
Other Technical			1.00		1.00			
Technology Total			1.80		1.80			
Total			132.39		127.49			
Staffing Allocation Total^^			123.3		122.3			

^Positions included within the Teacher category are detailed in Section G – Staffing Allocations.

^^ Teaching Assistants (TAs) are allocated at a 3 TA to 1 Teacher ratio. This adjusted number is the FTE allocation to the school.

LAB SCHOOL FOR STUDENT-CENTERED LEARNING

(School name to be determined.)

Lab School for Student-Centered Learning

Beginning in the 2020-21 school year, **Murray High School** (grades 9-12) and the **Community Public Charter School** (grades 6-8) merged and operated as one charter school for grades 6-12. A community advisory committee is in the process of recommending a new name for the joint charter school.

General School Information

- Grades Served: 6-12
- Address: 1200 Forest Street, Charlottesville, VA 22903
- Phone: 434-296-3090
- Principal: Chad Ratliff
- 2020 Accreditation Status: Accreditation Waived
- 2019 Accreditation Status: Accredited with Conditions



Chad Ratliff
Principal
2017-Present

ACPS' charter school serves grades 6 through 12 and aims to foster creativity and intellectual curiosity through art and design, experiential learning, mastery, and student agency. Our focus on interdisciplinary learning, especially through project-based learning, reflects the division's objective to engage every student. Aligned with the division's objective to improve opportunity and achievement, the school is in the first year of establishing the International Baccalaureate Programme, with courses beginning in the 2020-21 school year and full diplomas earned in 2021-22. As a lab school, we exist to design and pilot nontraditional approaches to learning that align to the Division's strategic plan with the intent to inform practices more broadly. We partner with researchers at UVA and MIT, and we regularly collaborate with the division's comprehensive middle and high schools to ensure that we are building practices that are applicable countywide.

Student Enrollment: Fall Membership

	2018-2019		2019-2020		2020-2021
	Grades 6-8	Grades 9-12	Grades 6-8	Grades 9-12	Grades 6-12
Total Enrollment	46	89	56	85	162
Students with Disabilities	26.1%	25.8%	14.3%	32.9%	21.0%
Economically Disadvantaged	23.9%	27.0%	17.9%	21.2%	22.2%
English Learners	2.2%	0.0%	3.6%	0.0%	2.5%



Facility Information

- Built in 1959
- 30,915 square feet
- 7.1-acre site

Albemarle County Public Schools' charter school serves middle and high school students from all three feeder patterns through an admissions process. Murray High School began serving high school students in 1988, while the Community Public Charter School opened to middle school students in 2008.

LAB SCHOOL FOR STUDENT-CENTERED LEARNING

(School name to be determined.)

CPCS/Murray	Actual 19-20	Adopted 20-21	20-21 FTE	Draft 21-22	21-22 FTE	% of Total	Draft v. Adopted	
							Increase	% lcr
Expenditure Summary by Expense								
Salary	\$1,563,717	\$1,609,705	28.67	\$1,673,139	29.15	68.6%	\$63,434	3.9%
Other Wages	\$21,068	\$44,054	0.00	\$44,054	0.00	1.8%	\$0	0.0%
Benefits	\$578,468	\$613,763	0.00	\$668,053	0.00	27.4%	\$54,290	8.8%
Operations	\$62,433	\$54,267	0.00	\$54,267	0.00	2.2%	\$0	0.0%
Total	\$2,225,687	\$2,321,789	28.67	\$2,439,513	29.15	100.0%	\$117,724	5.1%

Expenditure Summary by State Categorical Summary

Instruction	\$2,050,771	\$2,100,256	24.13	\$2,223,984	25.07	91.2%	\$123,728	5.9%
Admin, Attend & Health	\$48,296	\$50,028	1.00	\$51,828	1.00	2.1%	\$1,800	3.6%
Technology	\$40,668	\$36,626	0.45	\$37,826	0.45	1.6%	\$1,200	3.3%
Building Services	\$85,952	\$134,879	3.09	\$125,875	2.63	5.2%	-\$9,004	-6.7%
Total	\$2,225,687	\$2,321,789	28.67	\$2,439,513	29.15	100.0%	\$117,724	5.1%

Staffing Summary

<u>Admin, Attend & Health</u>		
Nurse	1.00	1.00
Admin, Attend & Health Total	1.00	1.00
<u>Building Services</u>		
Custodial	3.09	2.63
Building Services Total	3.09	2.63
<u>Instruction</u>		
Clerical	2.00	2.00
Principal	1.00	1.00
Teacher^	20.50	21.07
Teaching Assistant	0.63	1.00
Instruction Total	24.13	25.07
<u>Technology</u>		
Teacher^	0.20	0.20
Other Technical	0.25	0.25
Technology Total	0.45	0.45
Total	28.67	29.15
Staffing Allocation Total^^	28.2	28.5

^Positions included within the Teacher category are detailed in Section G – Staffing Allocations.

^^ Teaching Assistants (TAs) are allocated at a 3 TA to 1 Teacher ratio. This adjusted number is the FTE allocation to the school.

CENTER I

Center I

General Information

- Address: 1180 Seminole Trail, Suite 225, Charlottesville, VA 22901
- Phone: 434-244-8900
- Director: Michael Craddock

Center I is Albemarle County Public School's high school specialty center that hosts an Information and Communication Technology learning community. As a learning center designed to support students exploring their passions and interests, the student experience over three years evolves from introductory coursework to capstone projects that include self-directed and work-based learning experiences. The passion, problem, and project-based approach to instruction bring together both elective course work within the ICT field along with academic courses to ensure students see purpose and relevance in their work at Center I.



Michael Craddock
Director
2019-Present

Center I serves students in grades 10, 11, and 12 within the ICT learning community while also continuing to offer a range of experiences for students in their Senior year. On a collegiate schedule, with college faculty, students can elect to sign up for Composition I and II and US Government I and II to meet their English 12 and US/VA Government graduation requirements. Students can also participate in a self-directed learning experience where, with the support of Center I faculty, they can complete a Senior Capstone Project in an area of interest. A Senior Capstone Project can focus on one large project or be composed of several smaller ones. The outcomes of the project are determined by the student and may include high school course credit, earning an industry-recognized credential, participation in a work-based learning experience, and/or completion of a robust portfolio to support career and college aspirations.

Student Enrollment: Fall Membership

	2018-2019	2019-2020	2020-2021
Total Enrollment	21	42	110



Facility Information

- Opened in 2018
- 42,274 square feet (all programs)
- Located in the Seminole Place complex

CENTER I

High School Center 1	Actual 19-20	Adopted 20-21	20-21 FTE	Draft 21-22	21-22 FTE	% of Total	Draft v. Adopted	
							Increase	% lcr
Expenditure Summary by Expense								
Salary	\$177,816	\$458,870	9.07	\$509,067	9.55	64.8%	\$50,197	10.9%
Other Wages	\$44	\$7,514	0.00	\$7,514	0.00	1.0%	\$0	0.0%
Benefits	\$69,937	\$192,895	0.00	\$208,808	0.00	26.6%	\$15,913	8.2%
Operations	\$77,807	\$59,772	0.00	\$59,772	0.00	7.6%	\$0	0.0%
Total	\$325,604	\$719,051	9.07	\$785,161	9.55	100.0%	\$66,110	9.2%
Expenditure Summary by State Categorical Summary								
Instruction	\$275,909	\$668,231	8.07	\$731,367	8.55	93.1%	\$63,136	9.4%
Admin, Attend & Health	\$49,695	\$50,820	1.00	\$53,794	1.00	6.9%	\$2,974	5.9%
Total	\$325,604	\$719,051	9.07	\$785,161	9.55	100.0%	\$66,110	9.2%
Staffing Summary								
Admin, Attend & Health								
Nurse			1.00		1.00			
Admin, Attend & Health Total			1.00		1.00			
Instruction								
Assistant Principal			1.00		1.00			
Clerical			1.00		1.00			
Teacher^			6.07		6.55			
Instruction Total			8.07		8.55			
Total			9.07		9.55			
Staffing Allocation Total^^			9.1		9.6			

^Positions included within the Teacher category are detailed in Section G – Staffing Allocations.

^^ Teaching Assistants (TAs) are allocated at a 3 TA to 1 Teacher ratio. This adjusted number is the FTE allocation to the school.

Charlottesville Albemarle Technical Education Center (CATEC)

General Information

- Address: 1000 East Rio Road, Charlottesville, VA 22901
- Phone: 434-973-4461
- Director: Stephanie Carter

The Charlottesville-Albemarle Technical Education Center (CATEC) is a regional technical education center that serves Albemarle County and Charlottesville City. CATEC offers a wide variety of CTE electives that train high school students to obtain the jobs they seek. Students have opportunities to practice hands-on and work-based learning activities alongside academically-driven curricula that enables them to earn dual-enrollment college credit, achieve industry certifications, and practice workplace readiness skills. CATEC prides itself on its built-in value, equity-based programs, and contribution to students' learning journeys.



Stephanie Carter
Director
2019-Present

Student Enrollment: Fall Membership

	2018-2019	2019-2020	2020-2021
Total Enrollment*	348	297	290
Total ACPS Enrollment	200	217	230

**Includes ACPS students, Charlottesville City Schools students, and out-of-district/homeschool students*



Facility Information

- Built in 1992
- 80,956 square feet
- 19.5 acre site

CATEC is operated jointly by Albemarle County Public Schools and Charlottesville City Schools.

Charlottesville Albemarle Technical Education Center (CATEC)	Actual 19-20	Adopted 20-21	20-21 FTE	Draft 21-22	21-22 FTE	% of Total	Draft v. Adopted	
							Increase	% lcr
Expenditure Summary by Expense								
Operations	\$1,770,408	\$1,787,629	0.00	\$1,787,629	0.00	100.0%	\$0	0.0%
Total	\$1,770,408	\$1,787,629	0.00	\$1,787,629	0.00	100.0%	\$0	0.0%
Expenditure Summary by State Categorical Summary								
Instruction	\$1,770,408	\$1,787,629	0.00	\$1,787,629	0.00	100.0%	\$0	0.0%
Total	\$1,770,408	\$1,787,629	0.00	\$1,787,629	0.00	100.0%	\$0	0.0%

Multi-School Services

Center for Learning & Growth

General Information

- Address: 225 Lambs Lane, Charlottesville, VA 22901
- Phone: 434-974-8070
- Coordinator: Ashley Struzik

The Center for Learning and Growth is the ACPS alternative learning program. The program recognizes that the student's neighborhood school is critical to the success of any specialized short-term intervention to ensure student success. Specialized support to individual students that require an alternative learning plan is available via a Superintendent referral for students in grades 6 through 12.

The staff provides a warm and welcoming experience for the students they serve. Students served by the Center for Learning and Growth are offered the opportunity to continue their learning with additional support that includes a blend of face-to-face instruction and computer-based instruction. The program offers the services of a caring staff who collaborate with each student's base school, including family and community partners to wrap around the student in an effort to meet the social and emotional needs of each student.

Students eligible for services by the Center for Learning and Growth are typically determined by the Director of Student Services and in agreement with the school principal, parent, and student. Student referrals for services are also made through the Office of the Superintendent and School Board action.

Center For Learning and Growth	Actual 19-20	Adopted 20-21	20-21 FTE	Draft 21-22	21-22 FTE	% of Total	Draft v. Adopted	
							Increase	% lcr
Expenditure Summary by Expense								
Salary	\$0	\$0	0.00	\$287,429	4.34	74.2%	\$287,429	N/A
Other Wages	\$0	\$0	0.00	\$0	0.00	0.0%	\$0	N/A
Benefits	\$0	\$0	0.00	\$99,708	0.00	25.8%	\$99,708	N/A
Operations	\$0	\$0	0.00	\$0	0.00	0.0%	\$0	N/A
Total	\$0	\$0	0.00	\$387,137	4.34	100.0%	\$387,137	N/A

Expenditure Summary by State Categorical Summary

Instruction	\$0	\$0	0.00	\$387,137	4.34	100.0%	\$387,137	N/A
Total	\$0	\$0	0.00	\$387,137	4.34	100.0%	\$387,137	N/A

Staffing Summary

Instruction					
Teacher^		0.00		4.34	
Instruction Total		0.00		4.34	
Total		0.00		4.34	
Staffing Allocation Total^^		0.0		4.3	

^Positions included within the Teacher category are detailed in Section G – Staffing Allocations.

^^ Teaching Assistants (TAs) are allocated at a 3 TA to 1 Teacher ratio. This adjusted number is the FTE allocation to the school.

This budget was previously shown as part of *Other Multi-School Services*. There are no programmatic changes in FY 2021/22.

Post High

General Information

- Address: 915 Henry Avenue, Charlottesville, VA 22903
- Phone: 434-977-4610
- Coordinator: Ashley Struzik

Post High serves 18- to 22-year-old students with a variety of disabilities. The Post High program is designed to provide supported transitions from the traditional school setting to an adult life in the community. Students receive instruction in employment skills, functional academic skills, social skills, and independent living skills according to an individualized education plan. The Post High staff work closely with the students, their families, and appropriate adult service agencies in order to facilitate a positive transition.

Post High's specialized instruction includes focuses on:

- Employment Skills - Developing the ability to secure, maintain and be successful in the workplace and on the job.
- Functional Academic Skills - Continuing to develop academic achievement in the context of everyday life.
- Social Skills - Increasing the capacity to engage peers, family and people in the community and workplace through communication and behaviors that promote positive relationships.
- Independent Living Skills - Learning and practicing competencies needed to experience a rewarding and productive life while engaging the community in which we live.

Post High	Actual 19-20	Adopted 20-21	20-21 FTE	Draft 21-22	21-22 FTE	% of Total	Draft v. Adopted	
							Increase	% lcr
Expenditure Summary by Expense								
Salary	\$0	\$0	0.00	\$289,915	7.66	65.1%	\$289,915	N/A
Other Wages	\$0	\$0	0.00	\$0	0.00	0.0%	\$0	N/A
Benefits	\$0	\$0	0.00	\$155,749	0.00	34.9%	\$155,749	N/A
Operations	\$0	\$0	0.00	\$0	0.00	0.0%	\$0	N/A
Total	\$0	\$0	0.00	\$445,664	7.66	100.0%	\$445,664	N/A

Expenditure Summary by State Categorical Summary

Instruction	\$0	\$0	0.00	\$445,664	7.66	100.0%	\$445,664	N/A
Total	\$0	\$0	0.00	\$445,664	7.66	100.0%	\$445,664	N/A

Staffing Summary

<u>Instruction</u>				
Teacher^		0.00		3.66
Teaching Assistant		0.00		4.00
Instruction Total		0.00		7.66
Total		0.00		7.66
Staffing Allocation Total^^		0.0		5.0

^Positions included within the Teacher category are detailed in Section G – Staffing Allocations.

^^ Teaching Assistants (TAs) are allocated at a 3 TA to 1 Teacher ratio. This adjusted number is the FTE allocation to the school.

This budget was previously shown as part of *Albemarle High School*. There are no programmatic changes in FY 2021/22.

Other Multi-School Services

This area is for staff that are typically assigned to specific schools throughout the year, but are not yet currently assigned to a specific school. Examples of this include emergency staffing and some new proposals. They are assigned throughout the year to meet specific needs at individual schools.

Multi-School Services	Actual 19-20	Adopted 20-21	20-21 FTE	Draft 21-22	21-22 FTE	% of Total	Draft v. Adopted	
							Increase	% lcr
Expenditure Summary by Expense								
Salary	\$3,692,153	\$4,546,080	79.70	\$7,725,460	106.02	66.8%	\$3,179,380	69.9%
Other Wages	\$93,257	\$145,172	0.00	\$229,094	0.00	2.0%	\$83,922	57.8%
Benefits	\$2,264,403	\$2,560,799	0.00	\$3,614,193	0.00	31.2%	\$1,053,394	41.1%
Total	\$6,049.813	\$7,252.051	79.70	\$11,568,747	106.02	100.0%	\$4,316,696	59.5%

Expenditure Summary by State Categorical Summary

Instruction	\$4,883,989	\$6,232,203	67.00	\$9,557,859	74.60	82.6%	\$3,325,656	53.4%
Admin, Attend & Health	\$807,514	\$915,016	11.60	\$1,546,329	20.20	13.4%	\$631,313	69.0%
Technology	\$81,664	\$104,832	1.10	\$0	0.00	0.0%	-\$104,832	-100.0%
Building Services	\$276,647	\$0	0.00	\$464,559	11.22	4.0%	\$464,559	N/A
Total	\$6,049,813	\$7,252,051	79.70	\$11,568,747	106.02	100.0%	\$4,316,696	59.5%

Staffing Summary

<u>Admin, Attend & Health</u>		
Psychologist	11.60	13.20
Other Professional	0.00	7.00
Admin, Attend & Health Total	11.60	20.20
<u>Building Services</u>		
Custodial	0.00	11.22
Building Services Total	0.00	11.22
<u>Instruction</u>		
Assistant Principal	1.00	0.00
Assistant Principal - Intern	1.00	2.00
Clerical	0.00	1.00
Other Management	3.10	2.10
Social Worker	0.50	0.50
Teacher^	54.42	65.00
Teaching Assistant	6.98	4.00
Instruction Total	67.00	74.60
<u>Technology</u>		
Other Technical	1.10	0.00
Technology Total	1.10	0.00
Total	79.70	106.02
Staffing Allocation Total^^	75.0	103.3

^Positions included within the Teacher category are detailed in Section G – Staffing Allocations.

^^ Teaching Assistants (TAs) are allocated at a 3 TA to 1 Teacher ratio. This adjusted number is the FTE allocation to the school.

Other Multi-School Services

Baseline FTEs

2.00	Assistant Principal Interns
4.00	SEAD Teachers
5.92	Emergency Staffing
3.56	Reduce Class Loads Teachers
3.00	ESOL Teachers
33.70	Special Education Specialists
13.20	Psychologists
1.33	Early Childhood Special Education
1.33	Instructional Coaches
0.98	CATEC Special Education
0.10	Homeless Coordinator
<u>10.72</u>	Floating Custodians
79.84	

New FTEs

0.50	Custodian
7.00	School Safety Specialists
3.34	Special Education Teachers
1.66	Early Childhood special Education
5.00	Enrollment Contingency Teachers
1.00	Floating Bookkeeper
<u>5.00</u>	ESOL Teachers
23.50	

School Program Categories

The program categories in this section are guided by state reporting standards and reflect budgets that are assigned specifically to schools. They do not account for budgets assigned to Division-wide services (departments). As such, the total budgets in this section equal the total budgets dedicated to specific school locations budgets in the previous section.

	Actual 19-20	Adopted 20-21	20-21 FTE	Draft 21-22	21-22 FTE	% of Total	Draft v. Adopted	
							Increase	% lcr
Instruction								
Regular Education	\$83,513,783	\$86,382,934	1,071.60	\$90,995,707	1,061.80	63.3%	\$4,612,773	5.3%
Special Education	\$19,384,245	\$22,023,287	363.85	\$22,985,469	361.73	16.0%	\$962,182	4.4%
School Counseling	\$5,545,719	\$5,309,801	67.85	\$5,947,971	75.82	4.1%	\$638,170	12.0%
Elem. Art, Music, and PE	\$4,580,872	\$4,633,876	59.88	\$4,724,001	58.24	3.3%	\$90,125	1.9%
Vocational Education	\$3,045,634	\$3,064,018	16.14	\$3,147,972	17.34	2.2%	\$83,954	2.7%
Library/Media	\$2,238,210	\$2,260,403	28.17	\$2,460,481	30.10	1.7%	\$200,078	8.9%
ESOL	\$2,809,760	\$3,024,986	37.46	\$3,427,105	41.79	2.4%	\$402,119	13.3%
Athletics	\$2,216,340	\$2,105,807	6.00	\$2,124,635	6.00	1.5%	\$18,828	0.9%
Gifted	\$1,741,402	\$1,735,693	21.10	\$1,802,995	21.10	1.3%	\$67,302	3.9%
Instructional Coaching	\$1,540,905	\$1,667,949	20.01	\$1,705,852	20.00	1.2%	\$37,903	2.3%
Preschool	\$1,698,605	\$1,958,523	42.67	\$2,104,515	41.00	1.5%	\$145,992	7.5%
Intervention Prevention	\$1,082,914	\$1,189,617	6.38	\$992,216	3.67	0.7%	(\$197,401)	-16.6%
Response to Intervention	\$835,741	\$941,593	11.60	\$823,355	9.71	0.6%	(\$118,238)	-12.6%
Alternative Education	\$449,593	\$503,232	5.90	\$410,331	4.64	0.3%	(\$92,901)	-18.5%
Instruction Total	\$130,683,724	\$136,801,719	1,758.61	\$143,652,605	1,752.94	100.0%	\$6,850,886	5.0%
Admin, Attend & Health								
Regular Education	\$81,857	\$0	0.00	\$0	0.00	0.0%	\$0	N/A
Health	\$2,167,641	\$2,326,923	36.60	\$2,907,736	45.20	100.0%	\$580,813	25.0%
Admin, Attend & Health Total	\$2,249,498	\$2,326,923	36.60	\$2,907,736	45.20	100.0%	\$580,813	25.0%
Technology								
Technology	\$2,216,524	\$2,242,357	28.00	\$2,298,157	28.00	100.0%	\$55,800	2.5%
Technology Total	\$2,216,524	\$2,242,357	28.00	\$2,298,157	28.00	100.0%	\$55,800	2.5%
Building Services								
Building Services Maintenance	\$5,503,754	\$5,363,976	121.22	\$5,929,145	130.44	100.0%	\$565,169	10.5%
Building Services Total	\$5,503,754	\$5,363,976	121.22	\$5,929,145	130.44	100.0%	\$565,169	10.5%
School-Based Programs Total	\$140,653,501	\$146,734,975	1,944.43	\$154,787,643	1,956.58	100.0%	\$8,052,668	5.5%

Instruction

Refer to Section G for details regarding staffing standards and allocations.

Regular Education

Staff is allocated to provide core class sizes of approximately 21 to 1 at the elementary school level and approximately 23 to 1 at the middle and high school levels. For middle and high schools, the state mandates free/non-teaching periods for teachers during the school day. At the middle school level, the state mandates no more than 7 periods taught of 8 held. The Division's middle school standards assume that 6 or 7 periods are taught per day. At the high school level, teachers teach only 6 periods of 8 held. This means that to meet the standard each day, it is required that 1.25 FTE teachers be employed for approximately every 23 high school students. For kindergarten and first grade, a 4-hour teaching assistant is provided for every 20 students.

Beyond core class size, division-wide, over 100 FTE additional teachers are provided to devote more time/resources for students who are economically disadvantaged. Differentiated staffing is staffing provided above the regular allocation and is determined by a formula that uses grade level and Free/Reduced Lunch percentages. The purpose of differentiated staffing is to assist with equity as some schools have more challenges based on risk factors of students. This staffing can be used to lower class sizes and/or provide additional supports for students.

Special Education

Special education programs include services for students who are intellectually disabled, physically handicapped, emotionally disturbed, learning disabled, or otherwise identified as a student with special needs. Staffing allocations are informed by the needs of identified students.

School Counseling

This program includes opportunities and experiences involving social, emotional, and academic counseling services for all students. In addition, consulting with staff members and parents on learning challenges; assisting students as they make educational and career plans; assisting students with personal and social development; providing referral assistance; and developing group and individual classroom guidance programs, are included.

Elementary Art, Music and P.E.

The Commonwealth requires that each school division employ five full-time equivalent positions per 1,000 students in grades kindergarten through five to serve as elementary resource teachers in art, music, and physical education (P.E.). ACPS establishes a standard beyond this state requirement that specifies a minimum level of services to be delivered to each student.

Vocational Education

Vocational Education, also known as Career and Technical Education (CTE), provides instructional programs through which students acquire knowledge and learn relevant technical applications of current and emerging careers while preparing for post-secondary studies and employment. The CTE curricula are focused on six program specific areas: business and information technology, family and computer sciences, health and medical sciences, marketing, technology education and engineering, and trade and industrial. Standard CTE course offerings are available in all middle and high schools. Advanced coursework and programs are also available through the high school academies and dual enrollment coursework. High school operational funds are the payment for students to attend Charlottesville Albemarle Technical Education Center (CATEC).

Library Media

Library Media Specialists are budgeted in this category. They oversee activities concerned with the use of all teaching and learning resources. Educational media are defined as any devices, content materials, methods, or experiences used for teaching and learning purposes. Operational funding for media centers is contained within the Regular Education category.

ESOL

The English as a Second or Other Language (ESOL) program serves ~1,400 students with widely varying levels of ability. Students with the greatest need, very little to no English abilities, receive intensive instruction to bring the student to levels of proficiency. The largest number of ESOL students are in a monitoring status when their proficiency reaches acceptable standards, and they require no more direct services, yet are required to be tracked and monitored annually. The State requires a minimum staffing of 17 staff per 1,000 students with limited English proficiency; however, ACPS staffs beyond the standards. Refer to Section G for detailed staffing standards.

Athletics

Athletics encompasses all direct costs associated with high school athletics. It includes one athletic director, one athletic clerical staff, and stipends for coaches for each of our 3 comprehensive high schools. These expenses also include fees for officiating, VHSL mandated fees, security for games, uniforms, and other equipment necessary to operate a number of athletic teams within each school.

Gifted

Gifted includes services for students in grades K-12. Students are to be provided services according to the Virginia Department of Education guidelines.

Instructional Coaching

Instructional Coaches (ICs) partner with teachers to help them improve teaching and learning so students are more successful. To do this, ICs collaborate with teachers to get a clear picture of current reality, identify goals, assist with deciding on instructional strategies and assessment practices to meet the goals, monitor progress, and problem solve until the teacher's goals are met. This research-driven best practice of reflection allows teachers to consider their practices as they progress through a Plan, Do, Study, Act model to improve student outcomes.

Preschool

ACPS provides instructional space for a variety of preschool programs: Head Start classrooms, Virginia Preschool Initiative (Bright Stars) classrooms, Title I, and special education. The only staffing by ACPS is for preschoolers identified as needing special education services.

Intervention Prevention

Intervention and prevention funds are allocated to schools based on school enrollment, and factor in the number of economically disadvantaged students. Funding and staffing support the continued efforts of schools to provide timely and effective interventions to students performing below grade level standards. These funds are provided to schools for additional instructional services.

Response to Intervention (RTI)

Response to Intervention (RTI) provides rapid deployment of differentiated instruction, assistive technology tools, and intervention strategies that can help eliminate learning gaps before they grow in significance. Resources in this program are meant to reduce the number of students needing more involved interventions in the future. RTI staffing is provided to schools at all levels.

Alternative Education

The Alternative Education program provides resources for the Center for Learning and Growth. Both staffing and operational funds are provided to allow the School Division to partner with community agencies. Students participate in restorative practices as they progress academically so that they are able to return to their base school.

Health Services

This program includes activities associated with physical and mental health services, including medical, dental and nursing services. In addition to a full-time nurse in every school, an 11-month coordinator of nursing services is housed at one of our schools to provide support for the nurses.

Additionally, the program includes activities concerned with administering psychological tests and interpreting the results; gathering and interpreting information about student behavior; working with other staff members in planning school programs that meet the special needs of students as indicated by psychological tests and behavioral evaluations; and planning and managing programs provided by psychological services, including psychological counseling for students, staff, and parents.

Building Services

Custodial staffing at schools is generally set by formula and square footage of the facility to be cleaned. Each school is assigned a lead custodian to head the custodial/light manual work at each school and schedule/manage community building rental needs. A custodian is assigned for each 20,000-25,000 square feet to be cleaned, excluding the lead custodian.

Technology

The technology program is directly related to the delivery of classroom instruction and the interaction between students and teachers, including the actual instruction of technology and technology support for students, staff, and school administration. Technology expenditures include technology resource positions (Learning Technology Integrators) that provide staff development as well as technology support positions that provide technical support (Technology Service Specialists).