

Energy Report Card

March 2015

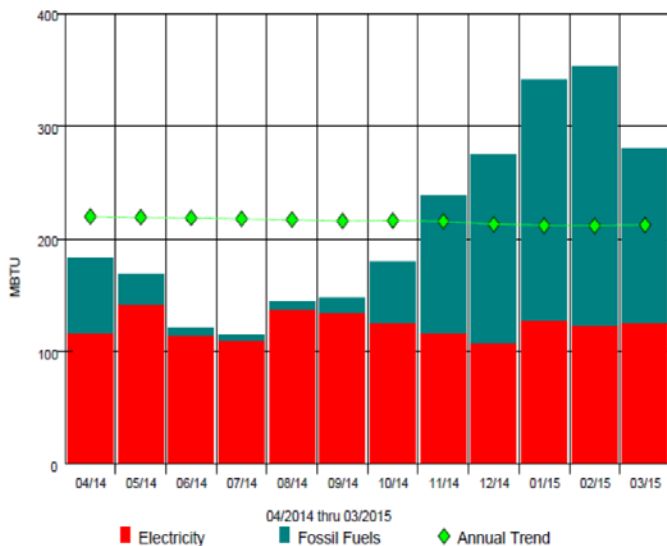


The Albemarle County Public School Division became an ENERGY STAR partner in April 2009. Monthly updates on energy and water usage are sent to each school, and ENERGY STAR ratings are updated in display cases each month. Albemarle County Public School Division has been recognized by EPA as an ENERGY STAR Leaders Top Performer for achieving a portfolio-wide energy performance score of 78.

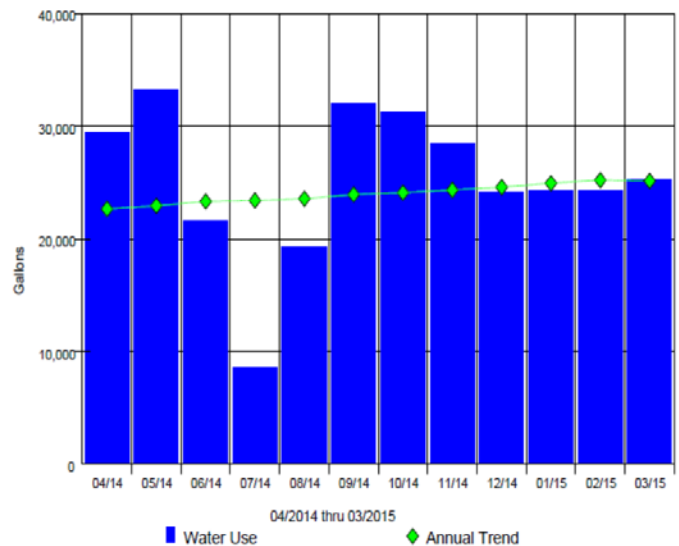
The district has also earned the ENERGY STAR label for superior energy performance for 22 of its school buildings. Successful efficiency improvement measures include communicating with schools about energy and water usage, and forming energy teams with representatives from many departments and schools.



Energy Use Graph - Monthly and Annual Trend for Woodbrook Elementary



Monthly Water Use for Woodbrook Elementary



Above is the monthly energy and water usage data from February 2014 through March 2015. The annual trend line is calculated by dividing the annual total for each month by twelve, and it helps to show whether overall usage is increasing or decreasing over the long term.

ENERGY STAR Information

The benchmark rating for a facility is on a scale of 1-100 relative to similar buildings nationwide using EPA's national energy performance rating system. The benchmark rating is based on your facility's source energy use, level of business activity, and geographical location. An ENERGY STAR rating comparison of all schools is attached.

Woodbrook Elementary School's current ENERGY STAR rating is 88. Your rating decreased 2 points from the prior period.

Last Call for Commercial Composting

In addition to the schools that participate in the composting program, (Jouett, Sutherland, & Meriwether Lewis) Crozet Elementary and Walton Middle are launching composting programs this fall. If your school is interested please contact Lindsay Snoddy at icsnoddy@k12albemarle.org or 434-975-9340.